



**Datos del Sistema de Información Epidemiológica del Consumo de Drogas de Centros de Integración Juvenil (CIJ)**  
**Cuadro 5.1. Tendencias del consumo de drogas alguna vez en la vida entre pacientes de primer ingreso a tratamiento en Centros de Integración Juvenil, del primer semestre de 2005 al segundo semestre de 2016, nivel nacional (%).**

| Semestre | Total de casos | Sustancias |         |          |            |         |       |                 |         |                  |         |               |
|----------|----------------|------------|---------|----------|------------|---------|-------|-----------------|---------|------------------|---------|---------------|
|          |                | Tabaco     | Alcohol | Cannabis | Inhalables | Cocaína | Crack | Metanfeta-minas | Éxtasis | Benzodiace-pinas | Heroína | Alucinó-genos |
| 2005-1   | 10,075         | 86.3       | 87.5    | 71.7     | 34.7       | 57.2    | 34.6  | 15.9            | 3.3     | 19.7             | 5.1     | 7.4           |
| 2005-2   | 9,346          | 87.8       | 89.8    | 72.9     | 35.9       | 57.5    | 37.4  | 17.2            | 4.0     | 19.1             | 4.6     | 8.2           |
| 2006-1   | 10,037         | 87.1       | 89.3    | 72.5     | 36.2       | 56.6    | 37.1  | 15.5            | 4.3     | 19.2             | 4.0     | 8.6           |
| 2006-2   | 8,876          | 88.0       | 90.1    | 70.9     | 35.8       | 55.9    | 39.5  | 15.3            | 4.1     | 17.9             | 4.3     | 8.4           |
| 2007-1   | 10,423         | 87.0       | 90.2    | 70.7     | 36.9       | 55.3    | 38.6  | 15.6            | 4.3     | 17.0             | 4.2     | 8.6           |
| 2007-2   | 9,204          | 87.4       | 90.9    | 72.1     | 38.8       | 55.3    | 37.8  | 12.5            | 4.0     | 17.2             | 5.1     | 9.1           |
| 2008-1   | 10,666         | 86.6       | 90.0    | 70.3     | 40.6       | 51.0    | 35.7  | 11.5            | 4.7     | 15.9             | 5.1     | 8.9           |
| 2008-2   | 9,773          | 86.5       | 90.6    | 73.0     | 44.4       | 49.4    | 32.9  | 12.5            | 4.5     | 16.1             | 5.0     | 9.1           |
| 2009-1   | 10,964         | 85.3       | 89.5    | 73.3     | 45.0       | 44.6    | 28.4  | 11.7            | 4.9     | 15.1             | 4.3     | 8.9           |
| 2009-2   | 9,827          | 85.7       | 89.7    | 75.6     | 44.7       | 44.9    | 27.4  | 13.0            | 5.0     | 15.5             | 5.2     | 9.8           |
| 2010-1   | 11,758         | 81.2       | 86.8    | 72.4     | 44.2       | 35.9    | 23.8  | 10.5            | 4.9     | 13.0             | 4.0     | 8.8           |
| 2010-2   | 11,671         | 83.8       | 88.4    | 75.2     | 43.8       | 39.6    | 24.8  | 11.1            | 5.8     | 13.2             | 4.4     | 9.9           |
| 2011-1   | 12,367         | 85.0       | 88.8    | 76.6     | 45.1       | 36.8    | 22.5  | 11.3            | 6.1     | 15.8             | 3.2     | 9.6           |
| 2011-2   | 11,958         | 85.6       | 89.4    | 78.5     | 43.1       | 37.4    | 24.8  | 11.5            | 6.1     | 14.6             | 3.5     | 10.0          |
| 2012-1   | 12,787         | 85.6       | 89.3    | 79.5     | 43.0       | 37.1    | 23.3  | 12.5            | 6.6     | 15.2             | 3.8     | 10.1          |
| 2012-2   | 11,941         | 84.2       | 88.8    | 81.4     | 38.1       | 37.1    | 21.7  | 14.3            | 6.3     | 15.2             | 3.7     | 9.9           |
| 2013-1   | 13,291         | 83.5       | 87.4    | 83.2     | 36.1       | 34.7    | 19.6  | 14.8            | 6.3     | 14.8             | 3.7     | 9.3           |
| 2013-2   | 11,692         | 84.2       | 87.1    | 85.4     | 33.4       | 34.6    | 19.2  | 15.4            | 6.5     | 14.4             | 2.8     | 10.5          |
| 2014-1   | 11,673         | 83.9       | 86.5    | 86.4     | 32.5       | 33.0    | 18.5  | 16.0            | 6.0     | 14.0             | 3.0     | 9.9           |
| 2014-2   | 10,792         | 83.5       | 86.5    | 87.4     | 31.8       | 33.3    | 18.0  | 17.8            | 6.3     | 14.0             | 3.1     | 9.8           |
| 2015-1   | 11,804         | 83.4       | 85.5    | 87.8     | 29.9       | 33.2    | 16.9  | 18.5            | 5.7     | 14.1             | 3.1     | 8.8           |
| 2015-2   | 10,862         | 84.5       | 86.2    | 88.1     | 29.7       | 33.8    | 17.1  | 22.2            | 5.8     | 14.9             | 3.4     | 9.9           |
| 2016-1   | 10,934         | 83.6       | 85.0    | 87.5     | 27.6       | 33.8    | 17.9  | 24.1            | 5.9     | 14.5             | 3.6     | 9.5           |
| 2016-2   | 12,096         | 86.0       | 86.8    | 87.2     | 28.2       | 36.9    | 20.3  | 27.1            | 6.9     | 14.5             | 3.5     | 11.5          |

Fuente: Centros de Integración Juvenil, Sistema Institucional de Información Epidemiológica del Consumo de Drogas. **Tendencias del consumo de drogas alguna vez en la vida en Centros de Integración Juvenil. Primer semestre de 2005 – Segundo semestre de 2016 (Nivel Nacional y Entidades Federativas).** México, 2017.



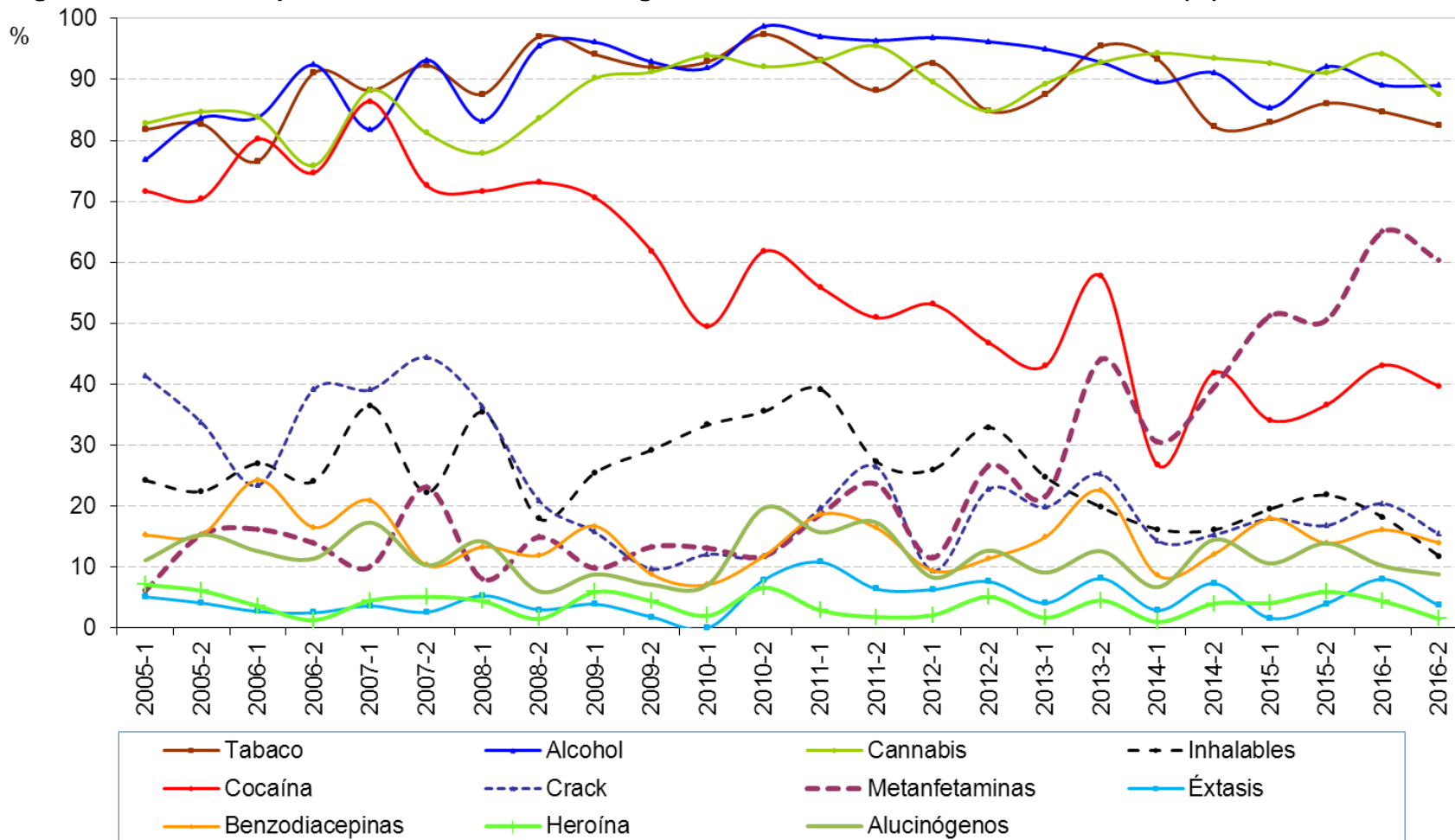
**Cuadro 5.2. Tendencias del consumo de drogas alguna vez en la vida entre pacientes de primer ingreso a tratamiento en Centros de Integración Juvenil, del primer semestre de 2005 al segundo semestre de 2016, Estado de Jalisco (%).**

| Semestre | Total de casos | Sustancias |         |          |            |         |       |                     |         |                      |         |                   |
|----------|----------------|------------|---------|----------|------------|---------|-------|---------------------|---------|----------------------|---------|-------------------|
|          |                | Tabaco     | Alcohol | Cannabis | Inhalables | Cocaína | Crack | Metanfeta-<br>minas | Éxtasis | Benzodiace-<br>pinas | Heroína | Alucinó-<br>genos |
| 2005-1   | 766            | 82.8       | 85.2    | 72.3     | 25.2       | 72.2    | 43.0  | 7.2                 | 2.9     | 20.1                 | 2.7     | 9.7               |
| 2005-2   | 816            | 88.5       | 90.4    | 73.9     | 28.6       | 71.1    | 44.1  | 15.1                | 4.4     | 23.3                 | 3.6     | 12.9              |
| 2006-1   | 909            | 89.0       | 89.2    | 75.9     | 29.3       | 71.2    | 38.3  | 16.9                | 4.6     | 23.4                 | 2.4     | 13.4              |
| 2006-2   | 871            | 89.2       | 86.1    | 74.3     | 31.1       | 69.1    | 39.3  | 17.3                | 5.6     | 21.7                 | 3.3     | 13.3              |
| 2007-1   | 920            | 89.5       | 90.0    | 75.0     | 32.3       | 71.0    | 39.8  | 17.4                | 4.2     | 21.2                 | 2.6     | 12.3              |
| 2007-2   | 869            | 88.8       | 88.8    | 76.6     | 32.5       | 73.0    | 40.7  | 16.8                | 4.3     | 20.7                 | 2.9     | 15.7              |
| 2008-1   | 909            | 89.0       | 88.9    | 75.2     | 35.3       | 69.7    | 39.2  | 14.2                | 8.0     | 20.7                 | 2.5     | 14.0              |
| 2008-2   | 852            | 89.8       | 93.7    | 79.7     | 36.9       | 66.8    | 32.7  | 14.1                | 5.9     | 23.5                 | 2.3     | 14.2              |
| 2009-1   | 974            | 87.1       | 92.5    | 79.0     | 41.1       | 65.1    | 30.9  | 12.8                | 9.0     | 21.9                 | 2.9     | 15.9              |
| 2009-2   | 744            | 88.3       | 90.7    | 81.0     | 42.3       | 59.1    | 26.7  | 12.5                | 7.8     | 21.6                 | 2.4     | 13.8              |
| 2010-1   | 898            | 84.9       | 90.5    | 77.2     | 40.4       | 53.2    | 25.1  | 14.9                | 10.0    | 18.8                 | 2.0     | 12.5              |
| 2010-2   | 855            | 86.4       | 92.3    | 80.0     | 42.2       | 58.4    | 24.3  | 17.3                | 10.8    | 20.1                 | 2.7     | 16.1              |
| 2011-1   | 905            | 87.8       | 92.3    | 82.2     | 44.4       | 56.5    | 26.0  | 17.5                | 11.2    | 25.3                 | 1.5     | 13.6              |
| 2011-2   | 926            | 89.7       | 91.7    | 87.8     | 44.9       | 54.0    | 27.4  | 19.3                | 12.1    | 25.8                 | 1.6     | 16.6              |
| 2012-1   | 1,059          | 88.1       | 92.3    | 83.1     | 46.7       | 54.5    | 26.4  | 20.1                | 11.1    | 27.5                 | 2.3     | 13.9              |
| 2012-2   | 1,027          | 85.6       | 90.5    | 84.0     | 42.0       | 50.7    | 25.8  | 18.5                | 10.4    | 25.4                 | 1.9     | 13.1              |
| 2013-1   | 1,107          | 90.0       | 93.1    | 85.5     | 44.8       | 50.6    | 23.3  | 19.6                | 8.9     | 25.8                 | 2.1     | 12.2              |
| 2013-2   | 1,037          | 90.1       | 91.5    | 86.3     | 38.1       | 50.0    | 24.0  | 23.3                | 8.8     | 24.5                 | 1.4     | 13.6              |
| 2014-1   | 985            | 90.2       | 90.7    | 86.6     | 37.4       | 44.2    | 21.8  | 25.1                | 9.1     | 20.3                 | 1.9     | 13.2              |
| 2014-2   | 987            | 89.1       | 91.2    | 88.8     | 35.2       | 48.8    | 22.0  | 30.3                | 8.5     | 20.9                 | 1.8     | 12.9              |
| 2015-1   | 1,001          | 87.9       | 90.4    | 87.7     | 32.1       | 45.7    | 18.8  | 35.2                | 8.3     | 21.6                 | 1.6     | 10.6              |
| 2015-2   | 845            | 89.6       | 91.5    | 88.8     | 35.4       | 46.7    | 18.9  | 44.1                | 8.8     | 23.7                 | 2.0     | 14.2              |
| 2016-1   | 884            | 91.0       | 90.3    | 87.6     | 33.6       | 47.4    | 21.8  | 51.1                | 7.2     | 24.0                 | 1.6     | 11.4              |
| 2016-2   | 1,038          | 91.7       | 92.9    | 85.5     | 30.1       | 48.1    | 22.7  | 54.7                | 8.4     | 24.1                 | 1.4     | 14.2              |

Fuente: Centros de Integración Juvenil, Sistema Institucional de Información Epidemiológica del Consumo de Drogas. **Tendencias del consumo de drogas alguna vez en la vida en Centros de Integración Juvenil. Primer semestre de 2005 – Segundo semestre de 2016 (Nivel Nacional y Entidades Federativas).** México, 2017.



Gráfica E. Tendencias del consumo de drogas alguna vez en la vida entre pacientes de primer ingreso a tratamiento en Centros de Integración Juvenil, del primer semestre de 2005 al segundo semestre de 2016, CIJ Puerto Vallarta (%).



Fuente: Centros de Integración Juvenil, Sistema Institucional de Información Epidemiológica del Consumo de Drogas. Tendencias del consumo de drogas alguna vez en la vida en Centros de Integración Juvenil. Primer semestre de 2005 – Segundo semestre de 2016 (Nivel Nacional y Entidades Federativas). México, 2017.



**Cuadro 5.3. Tendencias del consumo de drogas alguna vez en la vida entre pacientes de primer ingreso a tratamiento en Centros de Integración Juvenil, del primer semestre de 2005 al segundo semestre de 2016, CIJ Puerto Vallarta (%).**

| Semestre | Total de casos | Sustancias |         |          |            |         |       |                     |         |                      |         |                   |
|----------|----------------|------------|---------|----------|------------|---------|-------|---------------------|---------|----------------------|---------|-------------------|
|          |                | Tabaco     | Alcohol | Cannabis | Inhalables | Cocaína | Crack | Metanfeta-<br>minas | Éxtasis | Benzodiace-<br>pinas | Heroína | Alucinó-<br>genos |
| 2005-1   | 99             | 81.8       | 76.8    | 82.8     | 24.2       | 71.7    | 41.4  | 6.1                 | 5.1     | 15.2                 | 7.1     | 11.1              |
| 2005-2   | 98             | 82.7       | 83.7    | 84.7     | 22.4       | 70.4    | 33.7  | 15.3                | 4.1     | 15.3                 | 6.1     | 15.3              |
| 2006-1   | 111            | 76.6       | 83.8    | 83.8     | 27.0       | 80.2    | 23.4  | 16.2                | 2.7     | 24.3                 | 3.6     | 12.6              |
| 2006-2   | 79             | 91.1       | 92.4    | 75.9     | 24.1       | 74.7    | 39.2  | 13.9                | 2.5     | 16.5                 | 1.3     | 11.4              |
| 2007-1   | 110            | 88.2       | 81.8    | 88.2     | 36.4       | 86.4    | 39.1  | 10.0                | 3.6     | 20.9                 | 4.5     | 17.3              |
| 2007-2   | 117            | 92.3       | 93.2    | 81.2     | 22.2       | 72.6    | 44.4  | 23.1                | 2.6     | 10.3                 | 5.1     | 10.3              |
| 2008-1   | 113            | 87.6       | 83.2    | 77.9     | 35.4       | 71.7    | 36.3  | 8.0                 | 5.3     | 13.3                 | 4.4     | 14.2              |
| 2008-2   | 67             | 97.0       | 95.5    | 83.6     | 17.9       | 73.1    | 20.9  | 14.9                | 3.0     | 11.9                 | 1.5     | 6.0               |
| 2009-1   | 102            | 94.1       | 96.1    | 90.2     | 25.5       | 70.6    | 15.7  | 9.8                 | 3.9     | 16.7                 | 5.9     | 8.8               |
| 2009-2   | 113            | 92.0       | 92.9    | 91.2     | 29.2       | 61.9    | 9.7   | 13.3                | 1.8     | 8.8                  | 4.4     | 7.1               |
| 2010-1   | 99             | 92.9       | 91.9    | 93.9     | 33.3       | 49.5    | 12.1  | 13.1                | 0.0     | 7.1                  | 2.0     | 7.1               |
| 2010-2   | 76             | 97.4       | 98.7    | 92.1     | 35.5       | 61.8    | 11.8  | 11.8                | 7.9     | 11.8                 | 6.6     | 19.7              |
| 2011-1   | 102            | 93.1       | 97.1    | 93.1     | 39.2       | 55.9    | 19.6  | 18.6                | 10.8    | 18.6                 | 2.9     | 15.7              |
| 2011-2   | 110            | 88.2       | 96.4    | 95.5     | 27.3       | 50.9    | 26.4  | 23.6                | 6.4     | 16.4                 | 1.8     | 17.3              |
| 2012-1   | 96             | 92.7       | 96.9    | 89.6     | 26.0       | 53.1    | 9.4   | 11.5                | 6.3     | 9.4                  | 2.1     | 8.3               |
| 2012-2   | 79             | 84.8       | 96.2    | 84.8     | 32.9       | 46.8    | 22.8  | 26.6                | 7.6     | 11.4                 | 5.1     | 12.7              |
| 2013-1   | 121            | 87.6       | 95.0    | 89.3     | 24.8       | 43.0    | 19.8  | 21.5                | 4.1     | 14.9                 | 1.7     | 9.1               |
| 2013-2   | 111            | 95.5       | 92.8    | 92.8     | 19.8       | 57.7    | 25.2  | 44.1                | 8.1     | 22.5                 | 4.5     | 12.6              |
| 2014-1   | 105            | 93.3       | 89.5    | 94.3     | 16.2       | 26.7    | 14.3  | 30.5                | 2.9     | 8.6                  | 1.0     | 6.7               |
| 2014-2   | 124            | 82.3       | 91.1    | 93.5     | 16.1       | 41.9    | 15.3  | 39.5                | 7.3     | 12.1                 | 4.0     | 14.5              |
| 2015-1   | 123            | 82.9       | 85.4    | 92.7     | 19.5       | 34.1    | 17.9  | 51.2                | 1.6     | 17.9                 | 4.1     | 10.6              |
| 2015-2   | 101            | 86.1       | 92.1    | 91.1     | 21.8       | 36.6    | 16.8  | 50.5                | 4.0     | 13.9                 | 5.9     | 13.9              |
| 2016-1   | 137            | 84.7       | 89.1    | 94.2     | 18.2       | 43.1    | 20.4  | 65.0                | 8.0     | 16.1                 | 4.4     | 10.2              |
| 2016-2   | 136            | 82.4       | 89.0    | 87.5     | 11.8       | 39.7    | 15.4  | 60.3                | 3.7     | 14.0                 | 1.5     | 8.8               |

Fuente: Centros de Integración Juvenil, Sistema Institucional de Información Epidemiológica del Consumo de Drogas. **Tendencias del consumo de drogas alguna vez en la vida en Centros de Integración Juvenil. Primer semestre de 2005 – Segundo semestre de 2016 (Nivel Nacional y Entidades Federativas).** México, 2017.



**Cuadro 5.4. Características y patrón de consumo de pacientes de primer ingreso a tratamiento en Centros de Integración Juvenil entre julio y diciembre de 2016.**

|   |                           | CIJ Puerto Vallarta<br>(N=136) | Municipio de Guadalajara<br>(N=401) | Estado de Jalisco<br>(N=1,038) | Nacional<br>(N=12,096)     |
|---|---------------------------|--------------------------------|-------------------------------------|--------------------------------|----------------------------|
| <b>Sexo</b>   | Hombres                   | 86.0%                          | 77.6%                               | 80.9%                          | 82.5%                      |
|   | Mujeres                   | 14.0%                          | 22.4%                               | 19.1%                          | 17.5%                      |
|   | Razón H:M                 | 6.2 hombres por cada mujer     | 3.5 hombres por cada mujer          | 4.2 hombres por cada mujer     | 4.7 hombres por cada mujer |
| <b>Edad de ingreso</b>                                      | 15 a 19 años              | 25.7%                          | 33.9%                               | 32.6%                          | 39.2%                      |
|   | 20 a 24 años              | 11.0%                          | 10.5%                               | 12.4%                          | 14.2%                      |
|   | 25 a 29 años              | 12.5%                          | 10.0%                               | 10.9%                          | 10.1%                      |
|   | Promedio                  | 25.7 años                      | 25.9 años                           | 25.4 años                      | 22.9 años                  |
| <b>Edad de inicio del uso de drogas ilícitas</b>            | 10 a 14 años              | 52.2%                          | 42.4%                               | 44.2%                          | 43.1%                      |
|   | 15 a 19 años              | 31.6%                          | 39.9%                               | 38.2%                          | 43.0%                      |
|   | 20 a 24 años              | 8.1%                           | 8.2%                                | 8.8%                           | 6.9%                       |
|   | Promedio                  | 15.6 años                      | 16.1 años                           | 16 años                        | 16.0 años                  |
| <b>Principales drogas ilícitas de inicio</b>                | 1. Cannabis (75.7%)       | 1. Cannabis (66.8%)            | 1. Cannabis (69.0%)                 | 1. Cannabis (74.0%)            |                            |
|   | 2. Cocaína (12.5%)        | 2. Inhalables (11.5%)          | 2. Cocaína (11.0%)                  | 2. Inhalables (9.6%)           |                            |
|   | 3. Metanfetaminas (7.4%)  | 3. Cocaína (8.7%)              | 3. Inhalables (8.5%)                | 3. Cocaína (7.3%)              |                            |
| <b>Principales drogas de mayor impacto en el último año</b> | 1. Metanfetaminas (51.9%) | 1. Metanfetaminas (36.5%)      | 1. Metanfetaminas (36.5%)           | 1. Cannabis (41.4%)            |                            |
|   | 2. Cannabis (28.2%)       | 2. Cannabis (25.0%)            | 2. Cannabis (27.0%)                 | 2. Metanfetaminas (16.1%)      |                            |
|   | 3. Alcohol (11.5%)        | 3. Alcohol (14.1%)             | 3. Alcohol (12.2%)                  | 3. Alcohol (11.5%)             |                            |
|   | 4. Tabaco (5.3%)          | 4. Tabaco (8.1%)               | 4. Tabaco (6.4%)                    | 4. Inhalables (7.8%)           |                            |
|   | 5. Inhalables (0.8%)      | 5. Cocaína (6.6%)              | 5. Inhalables (5.1%)                | 5. Crack (6.5%)                |                            |
|   | 6. Cocaína (0.8%)         |                                |                                     |                                |                            |
|   | 7. Benzodiacepinas (0.8%) |                                |                                     |                                |                            |
|   | 8. Otras drogas (0.8%)    |                                |                                     |                                |                            |
| <b>Principales drogas consumidas en el último mes</b>       | 1. Tabaco (54.4%)         | 1. Tabaco (67.6%)              | 1. Tabaco (69.5%)                   | 1. Tabaco (64.0%)              |                            |
|   | 2. Alcohol (52.9%)        | 2. Alcohol (57.6%)             | 2. Alcohol (57.1%)                  | 2. Alcohol (54.4%)             |                            |
|   | 3. Cannabis (46.3%)       | 3. Cannabis (42.4%)            | 3. Cannabis (46.1%)                 | 3. Cannabis (52.8%)            |                            |
|   | 4. Metanfetaminas (31.6%) | 4. Metanfetaminas (25.4%)      | 4. Metanfetaminas (31.1%)           | 4. Metanfetaminas (14.5%)      |                            |
|   | 5. Cocaína (3.7%)         | 5. Cocaína (13.2%)             | 5. Cocaína (11.2%)                  | 5. Inhalables (10.9%)          |                            |

**Fuente:** Centros de Integración Juvenil, Dirección de Investigación y Enseñanza, Subdirección de Investigación. **Estadística del consumo de drogas en pacientes de primer ingreso a tratamiento. Segundo semestre del 2016.** México, 2017.

Centros de Integración Juvenil, Dirección de Investigación y Enseñanza, Subdirección de Investigación, **Sistema Institucional de Información Epidemiológica del Consumo de Drogas.** México, 2017.