



**Sistema de Información Epidemiológica  
del Consumo de Drogas**

---

# **Tendencias del consumo de drogas alguna vez en la vida en Centros de Integración Juvenil.**

**Segundo semestre de 2004 – Segundo semestre de 2013  
(Nivel Nacional y Entidades Federativas)**

---

**Alma Delia Gutiérrez López**

**Informe de Investigación 14-09e**

---

# Directorio

**Presidente Honorario Vitalicio del Patronato Nacional**

Dr. Jesús Kumate Rodríguez

**Presidente del Patronato Nacional**

Dr. Roberto Tapia Conyer

**Presidenta de la Comisión de Vigilancia**

Sra. Kena Moreno

**Directora General**

Lic. Carmen Fernández Cáceres

**Director General Adjunto de Operación y Patronatos**

Dr. José Ángel Prado García

**Director General Adjunto Normativo**

Dr. Ricardo Sánchez Huesca

**Director de Investigación y Enseñanza**

Dr. Jaime Arturo Quintanilla Bendek

**Subdirector de Investigación**

Mtro. David Bruno Díaz Negrete

**Jefa de Investigación Clínica y Epidemiológica**

Dra. Solveig Eréndira Rodríguez Kuri

---

# Presentación

Como parte del seguimiento epidemiológico del consumo de drogas en pacientes de primer ingreso a tratamiento a Centros de Integración Juvenil, el presente documento presenta la actualización de las tendencias observadas en el **consumo alguna vez en la vida** de los usuarios de drogas ilícitas que ingresaron por primera vez a tratamiento a Centros de Integración Juvenil entre el segundo semestre de 2004 y el segundo semestre de 2013.

Los datos se obtuvieron del formato de “Entrevista Inicial” del Expediente Clínico utilizado en la atención terapéutica de los usuarios de drogas que solicitan atención por consumo de drogas. La captura de información la realizó en un primer momento el Sistema Nacional de Vigilancia Epidemiológica de las Adicciones (SISVEA) de la Dirección General de Epidemiología de la Secretaría de Salud, en un segundo momento por la Dirección de Planeación de CIJ y actualmente parte de la captura la realiza directamente el terapeuta responsable de la entrevista a través del expediente clínico electrónico desarrollado por la institución y en el caso donde la unidad de atención no cuenta con el recurso del expediente clínico electrónico, la captura la realiza el personal de investigación responsable del proyecto.

La información que se presenta es a nivel nacional y para cada una de las entidades federativas en las que CIJ cuenta con al menos una unidad operativa y donde se brinda el servicio de tratamiento. **No se presenta** la información correspondiente al estado de **Tlaxcala** por no contar con datos suficientes.

Las drogas que se incluyen en las tendencias del consumo son: tabaco, alcohol, cannabis, inhalables, cocaína en polvo, crack, metanfetaminas, MDMA (Éxtasis) y otras metanfetaminas alucinógenas, benzodiazepinas (incluye Royhpnol), heroína y alucinógenos.

Finalmente, cabe señalar que la tendencia registrada en el consumo de drogas a partir del primer semestre de 2010 puede ser reflejo del ajuste realizado en el formato de «Entrevista Inicial» utilizado para la obtención de la información y de la implementación del expediente a un sistema electrónico.

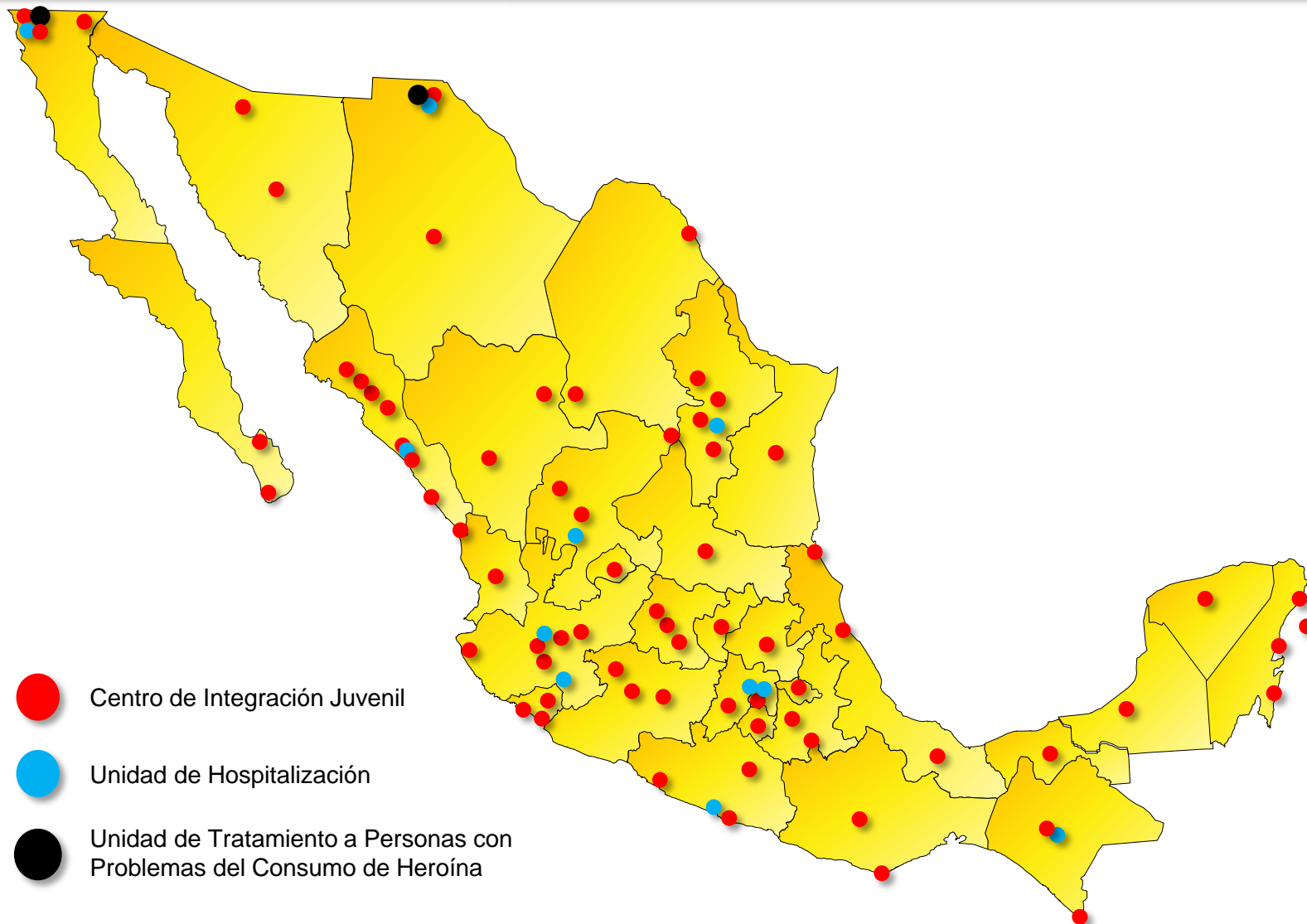
**Total de casos por semestre y Entidad Federativa  
Segundo semestre de 2004 – Segundo semestre de 2013**

Pág.	Estado	Semestre																		
		2004-2	2005-1	2005-2	2006-1	2006-2	2007-1	2007-2	2008-1	2008-2	2009-1	2009-2	2010-1	2010-2	2011-1	2011-2	2012-1	2012-2	2013-1	2013-2
6	<b>Nacional</b>	<b>8,458</b>	<b>10,075</b>	<b>9,346</b>	<b>10,037</b>	<b>8,876</b>	<b>10,423</b>	<b>9,204</b>	<b>10,666</b>	<b>9,773</b>	<b>10,964</b>	<b>9,827</b>	<b>11,758</b>	<b>11,671</b>	<b>12,367</b>	<b>11,958</b>	<b>12,787</b>	<b>11,941</b>	<b>13,291</b>	<b>11,692</b>
7	Aguascalientes	218	166	131	184	118	139	114	115	91	103	79	92	105	94	136	114	103	136	149
8	Baja California	456	557	580	483	459	551	440	534	521	534	603	577	556	593	518	608	704	832	685
9	Baja California Sur	88	150	88	109	39	51	48	78	79	66	73	88	116	120	126	127	98	140	98
10	Campeche	S.D.	18	56	62	45	44	39	20	22	45	33	21	46	47	45	53	49	76	56
11	Coahuila	269	316	257	281	262	292	213	340	292	377	252	290	316	362	239	356	319	380	305
12	Colima	191	184	173	201	203	280	187	244	219	248	208	244	281	284	234	348	386	402	289
13	Chiapas	72	127	118	115	141	187	93	133	134	159	123	110	147	157	184	189	158	123	112
14	Chihuahua	407	530	486	462	373	511	578	571	491	501	401	432	456	361	446	455	403	480	309
15	Distrito Federal	2,084	2,467	2,165	2,250	2,008	2,367	2,229	2,782	2,516	2,974	2,886	3,596	3,491	3,641	3,304	3,267	2,849	3,141	2,774
16	Durango	98	135	144	148	82	218	171	168	208	264	251	199	218	255	231	212	179	260	156
17	Guanajuato	341	429	351	419	404	434	449	479	505	442	468	386	470	482	474	501	576	525	583
18	Guerrero	172	219	226	194	194	284	275	269	225	235	209	259	275	268	252	320	306	327	271
19	Hidalgo	83	128	100	110	86	96	108	109	88	90	62	162	109	161	140	133	105	157	140
20	Jalisco	766	766	816	909	871	920	869	909	852	974	744	898	855	905	926	1,059	1,027	1,107	1,037
21	México	1,040	1,065	1,073	1,020	1,116	1,142	1,047	1,174	1,110	1,229	1,177	1,536	1,506	1,480	1,715	1,742	1,740	1,682	1,608
22	Michoacán	84	96	94	93	98	87	69	111	144	132	103	168	149	176	156	215	202	228	234
23	Morelos	81	68	71	67	61	73	88	91	84	93	72	92	60	101	91	87	71	107	94
24	Nayarit	S.D.	1	4	4	8	4	3	4	1	1	23	51	55	60	48	58	33	41	46
25	Nuevo León	348	560	550	720	537	679	499	454	410	460	338	554	459	379	297	329	310	352	326
26	Oaxaca	9	11	25	31	27	57	63	67	43	49	43	72	64	86	92	147	166	148	120
27	Puebla	146	214	176	214	164	182	155	222	172	206	207	195	168	255	261	248	202	243	199
28	Querétaro	90	115	154	137	141	144	106	129	122	130	88	112	144	165	247	181	180	178	133
29	Quintana Roo	176	266	152	222	183	220	166	170	146	189	169	210	236	334	349	438	352	445	363
30	San Luis Potosí	116	132	149	163	106	116	103	140	105	163	120	150	120	130	119	167	124	168	159
31	Sinaloa	560	628	533	619	501	524	427	470	407	483	438	424	483	513	527	567	514	651	528
32	Sonora	103	132	139	181	141	178	159	255	245	243	196	301	241	296	215	263	247	300	273
33	Tabasco	S.D.	12	18	68	53	40	40	56	67	44	58	41	56	70	40	59	60	57	47
34	Tamaulipas	131	199	125	148	84	135	114	174	115	132	108	106	100	109	107	80	79	100	96
	Tlaxcala*	S.D.	S.D.	S.D.	S.D.	S.D.	S.D.	S.D.	S.D.	S.D.	S.D.	S.D.	S.D.	S.D.	S.D.	S.D.	S.D.	S.D.	S.D.	16
35	Veracruz	123	158	151	159	172	171	146	127	112	136	124	122	101	155	135	118	112	122	111
36	Yucatán	117	146	151	160	133	189	129	155	108	97	91	101	95	154	114	149	131	212	170
37	Zacatecas	89	80	90	104	66	108	77	116	139	165	80	169	193	174	190	197	156	171	205

\* No se presenta la gráfica de esta Entidad Federativa por falta de casos.

S.D.= Sin Datos.

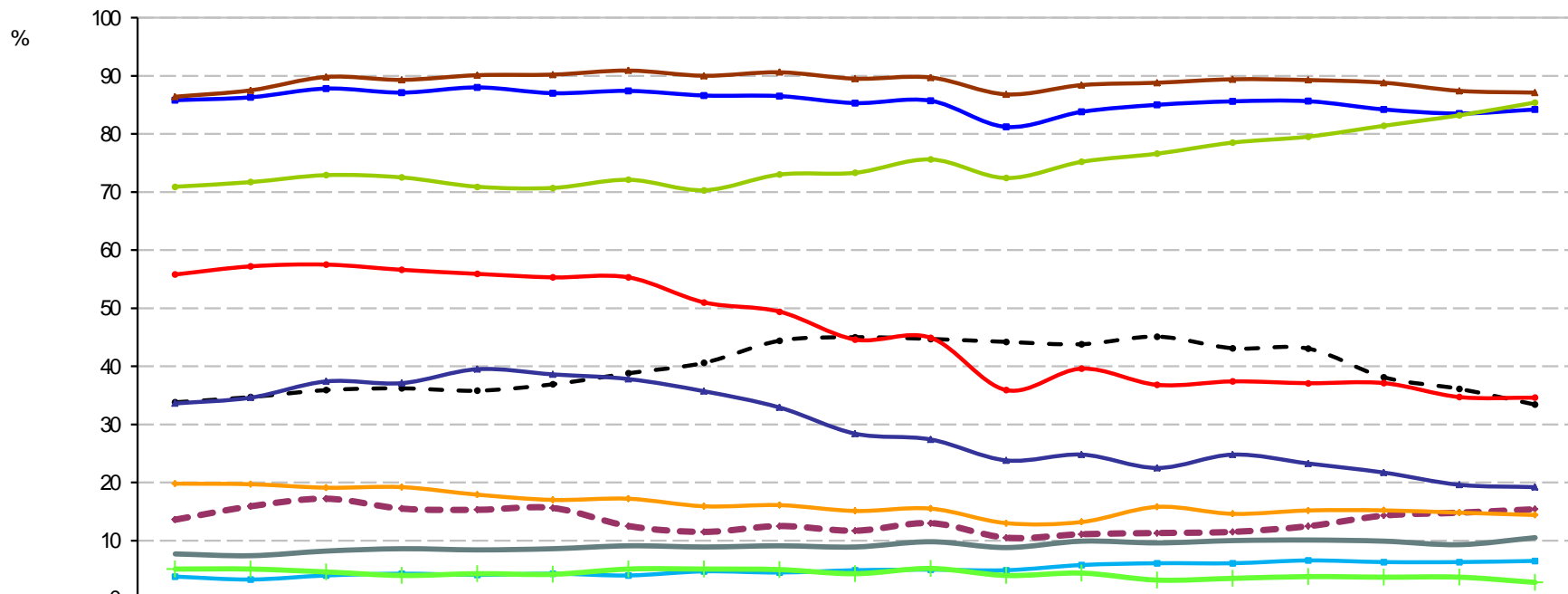
# Unidades de atención



Fuente: Centros de Integración Juvenil, Dirección de Investigación y Enseñanza, Subdirección de Investigación, Sistema de Información Epidemiológica del Consumo de Drogas. México, 2014

# Consumo *alguna vez en la vida* de las principales drogas reportadas por usuarios de drogas ilícitas en tratamiento en Centros de Integración Juvenil (Nivel Nacional)

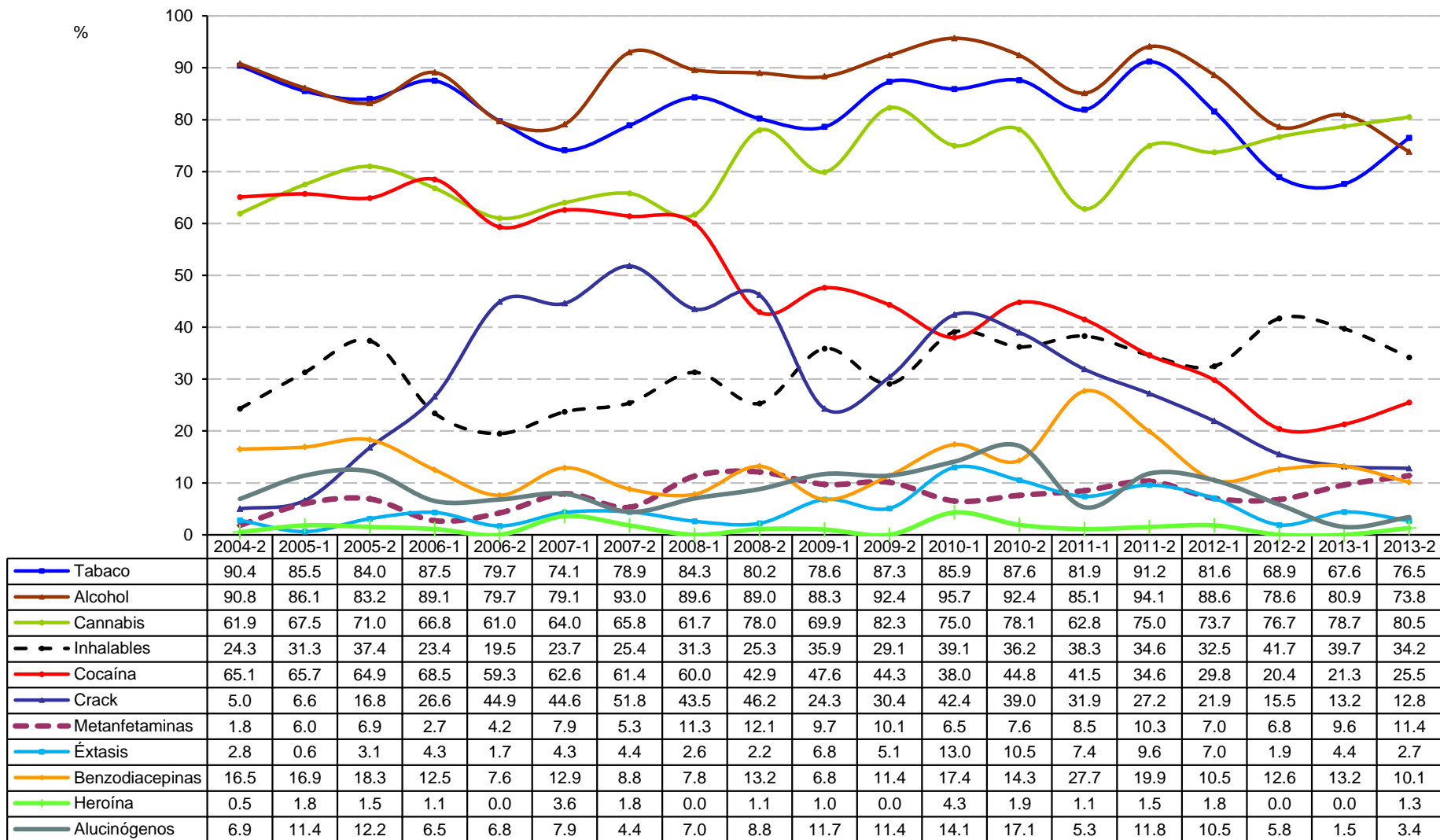
## Segundo semestre de 2004 – Segundo semestre de 2013



	2004-2	2005-1	2005-2	2006-1	2006-2	2007-1	2007-2	2008-1	2008-2	2009-1	2009-2	2010-1	2010-2	2011-1	2011-2	2012-1	2012-2	2013-1	2013-2
Tabaco	85.8	86.3	87.8	87.1	88.0	87.0	87.4	86.6	86.5	85.3	85.7	81.2	83.8	85.0	85.6	85.6	84.2	83.5	84.2
Alcohol	86.4	87.5	89.8	89.3	90.1	90.2	90.9	90.0	90.6	89.5	89.7	86.8	88.4	88.8	89.4	89.3	88.8	87.4	87.1
Cannabis	70.9	71.7	72.9	72.5	70.9	70.7	72.1	70.3	73.0	73.3	75.6	72.4	75.2	76.6	78.5	79.5	81.4	83.2	85.4
Inhalables	33.8	34.7	35.9	36.2	35.8	36.9	38.8	40.6	44.4	45.0	44.7	44.2	43.8	45.1	43.1	43.0	38.1	36.1	33.4
Cocaína	55.8	57.2	57.5	56.6	55.9	55.3	55.3	51.0	49.4	44.6	44.9	35.9	39.6	36.8	37.4	37.1	37.1	34.7	34.6
Crack	33.6	34.6	37.4	37.1	39.5	38.6	37.8	35.7	32.9	28.4	27.4	23.8	24.8	22.5	24.8	23.3	21.7	19.6	19.2
Metanfetaminas	13.6	15.9	17.2	15.5	15.3	15.6	12.5	11.5	12.5	11.7	13.0	10.5	11.1	11.3	11.5	12.5	14.3	14.8	15.4
Éxtasis	3.8	3.3	4.0	4.3	4.1	4.3	4.0	4.7	4.5	4.9	5.0	4.9	5.8	6.1	6.1	6.6	6.3	6.3	6.5
Benzodiazepinas	19.8	19.7	19.1	19.2	17.9	17.0	17.2	15.9	16.1	15.1	15.5	13.0	13.2	15.8	14.6	15.2	15.2	14.8	14.4
Heroína	5.1	5.1	4.6	4.0	4.3	4.2	5.1	5.1	5.0	4.3	5.2	4.0	4.4	3.2	3.5	3.8	3.7	3.7	2.8
Alucinógenos	7.7	7.4	8.2	8.6	8.4	8.6	9.1	8.9	9.1	8.9	9.8	8.8	9.9	9.6	10.0	10.1	9.9	9.3	10.5

# Consumo alguna vez en la vida de las principales drogas reportadas por usuarios de drogas ilícitas en tratamiento en CIJ del Estado de Aguascalientes (CIJ Aguascalientes)

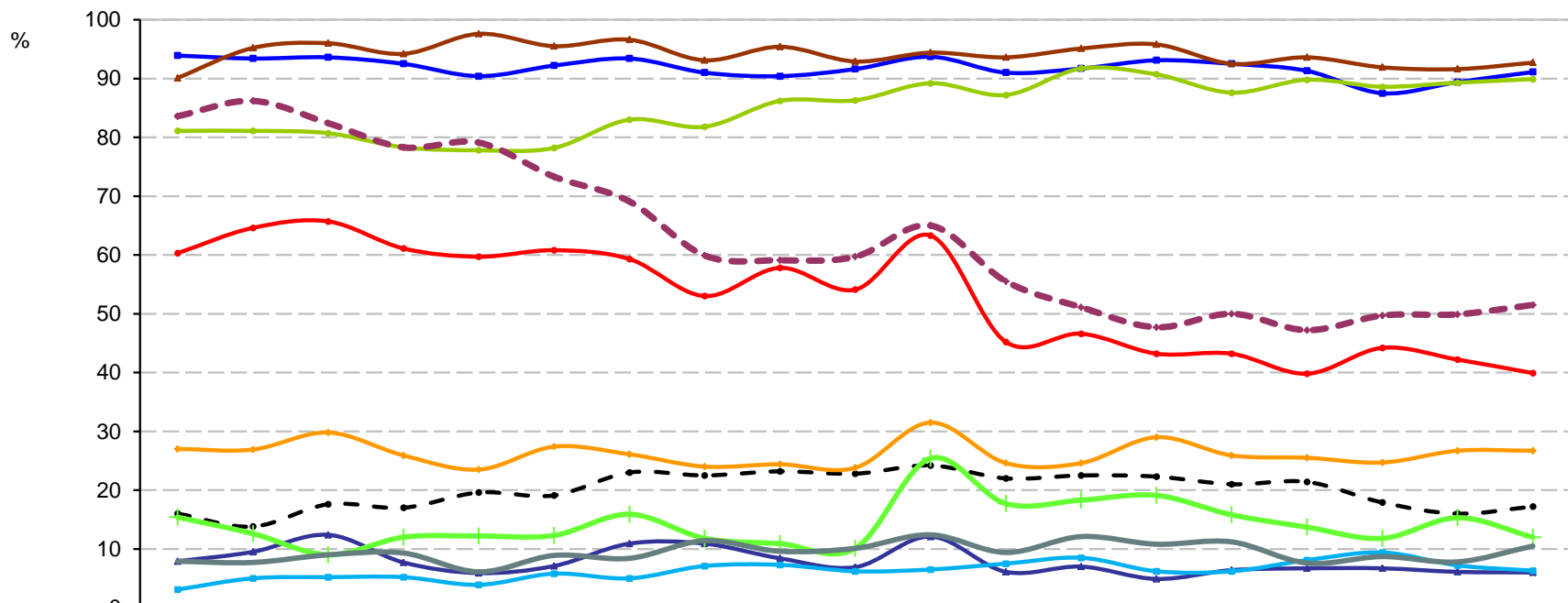
## Segundo semestre de 2004 – Segundo semestre de 2013



Fuente: Centros de Integración Juvenil, Dirección de Investigación y Enseñanza, Subdirección de Investigación, Sistema de Información Epidemiológica del Consumo de Drogas. México, 2014

# Consumo alguna vez en la vida de las principales drogas reportadas por usuarios de drogas ilícitas en tratamiento en CIJ del Estado de Baja California

## Segundo semestre de 2004 – Segundo semestre de 2013

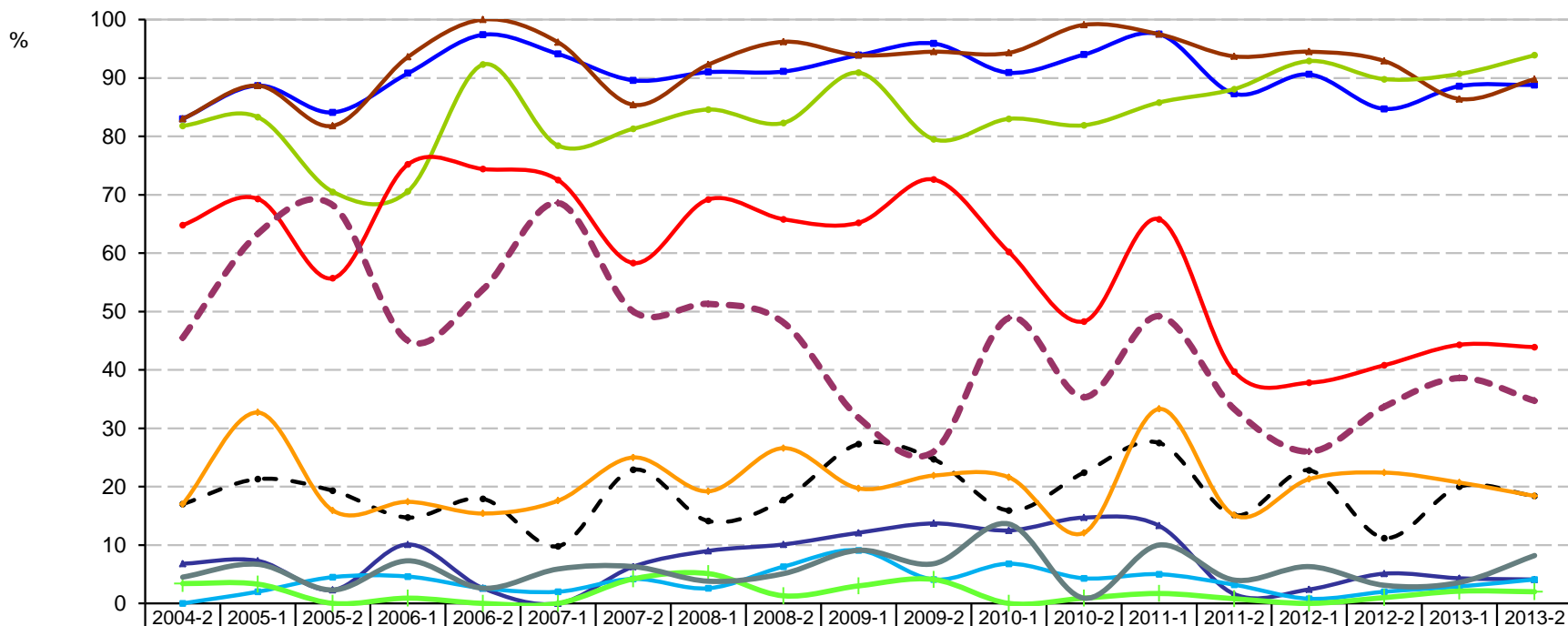


	2004-2	2005-1	2005-2	2006-1	2006-2	2007-1	2007-2	2008-1	2008-2	2009-1	2009-2	2010-1	2010-2	2011-1	2011-2	2012-1	2012-2	2013-1	2013-2
Tabaco	93.9	93.4	93.6	92.5	90.4	92.2	93.4	91.0	90.4	91.6	93.7	91.0	91.7	93.1	92.5	91.3	87.5	89.4	91.1
Alcohol	90.1	95.2	96.0	94.2	97.6	95.5	96.6	93.1	95.4	92.9	94.4	93.6	95.1	95.8	92.5	93.6	91.9	91.6	92.7
Cannabis	81.1	81.1	80.7	78.3	77.8	78.2	83.0	81.8	86.2	86.3	89.2	87.2	91.7	90.7	87.6	89.8	88.6	89.3	89.9
Inhalables	16.0	13.8	17.6	17.0	19.6	19.1	23.0	22.5	23.2	22.8	24.2	22.0	22.5	22.3	21.0	21.4	17.9	16.0	17.2
Cocaína	60.3	64.6	65.7	61.1	59.7	60.8	59.3	53.0	57.8	54.1	63.3	45.2	46.6	43.2	43.2	39.8	44.2	42.2	39.9
Crack	7.9	9.5	12.4	7.7	5.9	7.1	10.9	10.9	8.4	6.9	12.1	6.1	7.0	4.9	6.4	6.7	6.7	6.1	6.0
Metanfetaminas	83.6	86.2	82.4	78.3	79.1	73.3	69.1	59.9	59.1	59.7	65.0	55.5	51.1	47.7	50.0	47.2	49.7	49.9	51.5
Éxtasis	3.1	5.0	5.2	5.2	3.9	5.8	5.0	7.1	7.3	6.2	6.5	7.5	8.5	6.2	6.2	8.1	9.4	7.2	6.3
Benzodiacepinas	27.0	26.9	29.8	25.9	23.5	27.4	26.1	24.0	24.4	23.8	31.5	24.6	24.6	29.0	25.9	25.5	24.7	26.7	26.7
Heroína	15.4	12.6	9.0	12.0	12.2	12.3	15.9	11.8	10.9	10.1	25.4	17.7	18.3	19.1	15.8	13.7	11.8	15.3	12.0
Alucinógenos	7.9	7.7	9.0	9.3	6.1	8.9	8.4	11.4	9.6	10.1	12.4	9.4	12.1	10.8	11.2	7.6	8.7	7.8	10.5



# Consumo alguna vez en la vida de las principales drogas reportadas por usuarios de drogas ilícitas en tratamiento en CIJ del Estado de Baja California Sur

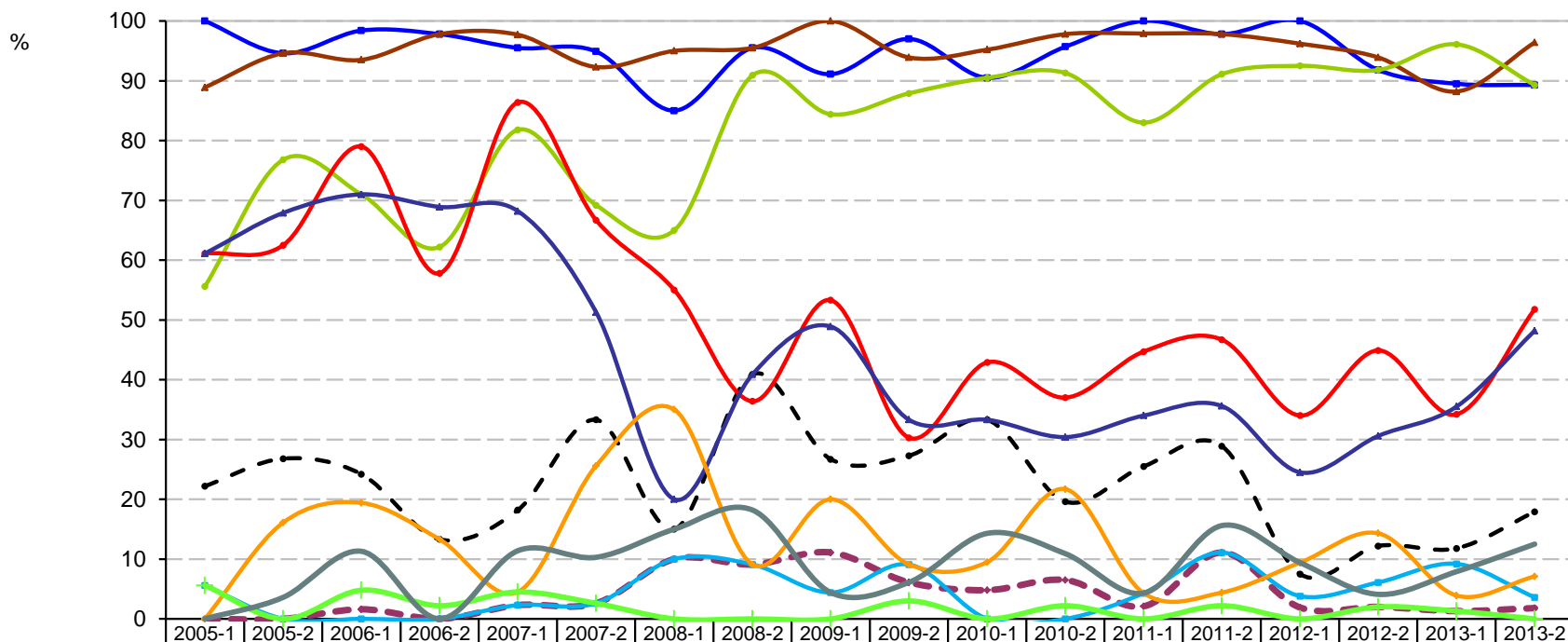
## Segundo semestre de 2004 – Segundo semestre de 2013



	2004-2	2005-1	2005-2	2006-1	2006-2	2007-1	2007-2	2008-1	2008-2	2009-1	2009-2	2010-1	2010-2	2011-1	2011-2	2012-1	2012-2	2013-1	2013-2
Tabaco	83.0	88.7	84.1	90.8	97.4	94.1	89.6	91.0	91.1	93.9	95.9	90.9	94.0	97.5	87.3	90.6	84.7	88.6	88.8
Alcohol	83.0	88.7	81.8	93.6	100.0	96.1	85.4	92.3	96.2	93.9	94.5	94.3	99.1	97.5	93.7	94.5	92.9	86.4	89.8
Cannabis	81.8	83.3	70.5	70.6	92.3	78.4	81.3	84.6	82.3	90.9	79.5	83.0	81.9	85.8	88.1	92.9	89.8	90.7	93.9
Inhalables	17.0	21.3	19.3	14.7	17.9	9.8	22.9	14.1	17.7	27.3	24.7	15.9	22.4	27.5	15.1	22.8	11.2	20.0	18.4
Cocaína	64.8	69.3	55.7	75.2	74.4	72.5	58.3	69.2	65.8	65.2	72.6	60.2	48.3	65.8	39.7	37.8	40.8	44.3	43.9
Crack	6.8	7.3	2.3	10.1	2.6	0.0	6.3	9.0	10.1	12.1	13.7	12.5	14.7	13.3	1.6	2.4	5.1	4.3	4.1
Metanfetaminas	45.5	63.3	68.2	45.0	53.8	68.6	50.0	51.3	48.1	31.8	26.0	48.9	35.3	49.2	33.3	26.0	33.7	38.6	34.7
Éxtasis	0.0	2.0	4.5	4.6	2.6	2.0	4.2	2.6	6.3	9.1	4.1	6.8	4.3	5.0	3.2	0.8	2.0	2.9	4.1
Benzodiacepinas	17.0	32.7	15.9	17.4	15.4	17.6	25.0	19.2	26.6	19.7	21.9	21.6	12.1	33.3	15.1	21.3	22.4	20.7	18.4
Heroína	3.4	3.3	0.0	0.9	0.0	0.0	4.2	5.1	1.3	3.0	4.1	0.0	0.9	1.7	0.8	0.0	1.0	2.1	2.0
Alucinógenos	4.5	6.7	2.3	7.3	2.6	5.9	6.3	3.8	5.1	9.1	6.8	13.6	0.9	10.0	4.0	6.3	3.1	3.6	8.2

# Consumo alguna vez en la vida de las principales drogas reportadas por usuarios de drogas ilícitas en tratamiento en CIJ del Estado de Campeche (CIJ Ciudad del Carmen)

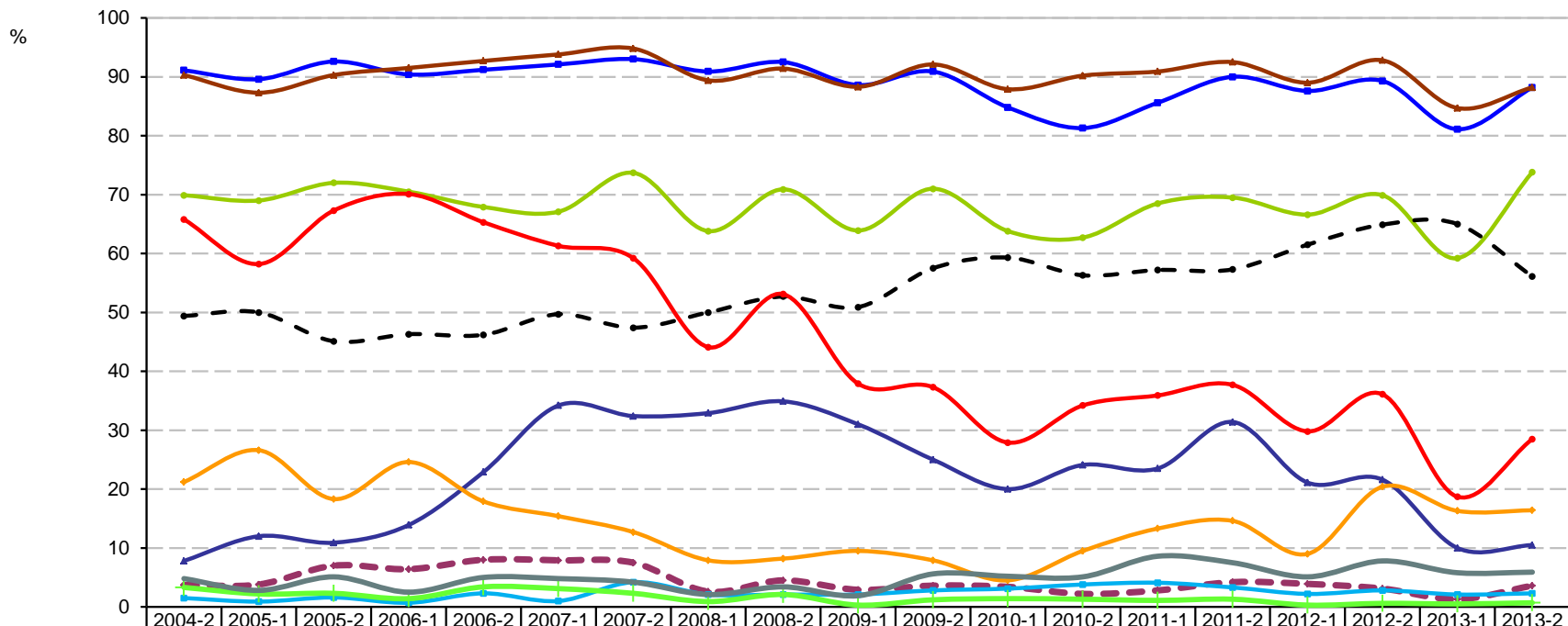
Primer semestre de 2005 – Segundo semestre de 2013



	2005-1	2005-2	2006-1	2006-2	2007-1	2007-2	2008-1	2008-2	2009-1	2009-2	2010-1	2010-2	2011-1	2011-2	2012-1	2012-2	2013-1	2013-2
Tabaco	100.0	94.6	98.4	97.8	95.5	94.9	85.0	95.5	91.1	97.0	90.5	95.7	100.0	97.8	100.0	91.8	89.5	89.3
Alcohol	88.9	94.6	93.5	97.8	97.7	92.3	95.0	95.5	100.0	93.9	95.2	97.8	97.9	97.8	96.2	93.9	88.2	96.4
Cannabis	55.6	76.8	71.0	62.2	81.8	69.2	65.0	90.9	84.4	87.9	90.5	91.3	83.0	91.1	92.5	91.8	96.1	89.3
Inhalables	22.2	26.8	24.2	13.3	18.2	33.3	15.0	40.9	26.7	27.3	33.3	19.6	25.5	28.9	7.5	12.2	11.8	17.9
Cocaína	61.1	62.5	79.0	57.8	86.4	66.7	55.0	36.4	53.3	30.3	42.9	37.0	44.7	46.7	34.0	44.9	34.2	51.8
Crack	61.1	67.9	71.0	68.9	68.2	51.3	20.0	40.9	48.9	33.3	33.3	30.4	34.0	35.6	24.5	30.6	35.5	48.2
Metanfetaminas	0.0	0.0	1.6	0.0	2.3	2.6	10.0	9.1	11.1	6.1	4.8	6.5	2.1	11.1	1.9	2.0	1.3	1.8
Éxtasis	5.6	0.0	0.0	0.0	2.3	2.6	10.0	9.1	4.4	9.1	0.0	0.0	4.3	11.1	3.8	6.1	9.2	3.6
Benzodiacepinas	0.0	16.1	19.4	13.3	4.5	25.6	35.0	9.1	20.0	9.1	9.5	21.7	4.3	4.4	9.4	14.3	3.9	7.1
Heroína	5.6	0.0	4.8	2.2	4.5	2.6	0.0	0.0	0.0	3.0	0.0	2.2	0.0	2.2	0.0	2.0	1.3	0.0
Alucinógenos	0.0	3.6	11.3	0.0	11.4	10.3	15.0	18.2	4.4	6.1	14.3	10.9	4.3	15.6	9.4	4.1	7.9	12.5

# Consumo alguna vez en la vida de las principales drogas reportadas por usuarios de drogas ilícitas en tratamiento en CIJ del Estado de Coahuila

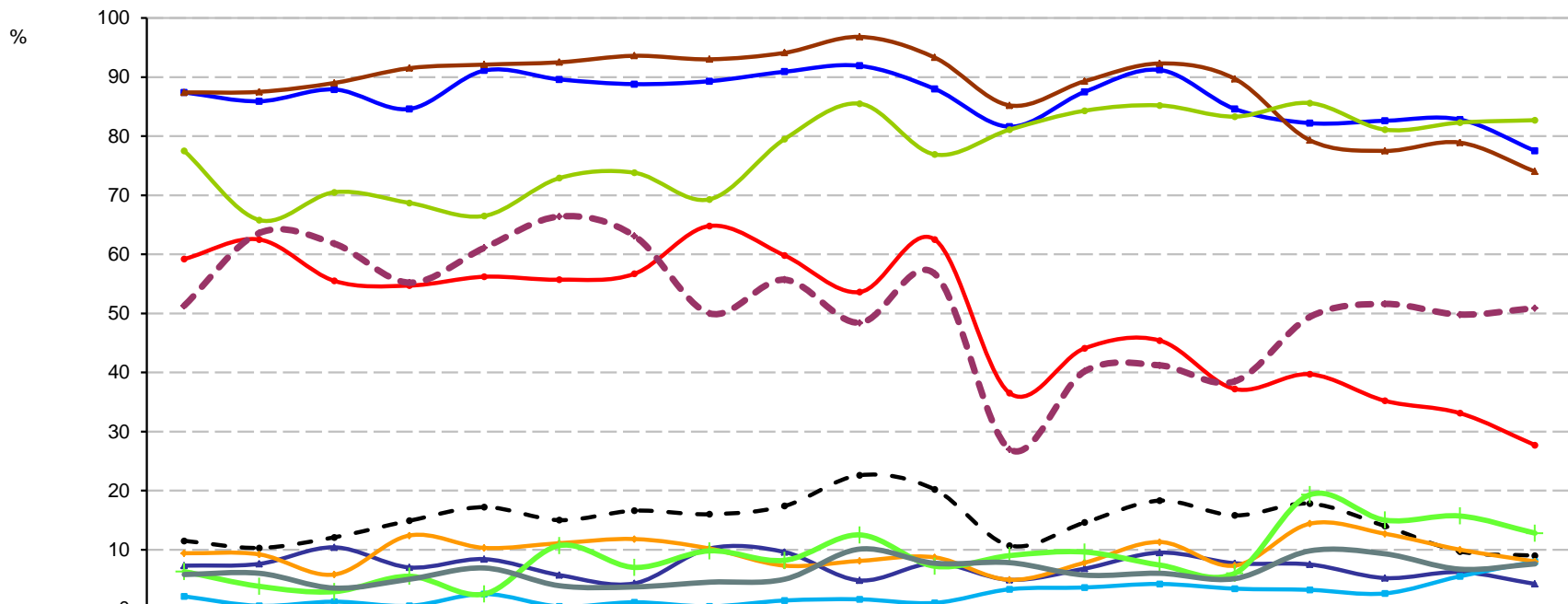
## Segundo semestre de 2004 – Segundo semestre de 2013



	2004-2	2005-1	2005-2	2006-1	2006-2	2007-1	2007-2	2008-1	2008-2	2009-1	2009-2	2010-1	2010-2	2011-1	2011-2	2012-1	2012-2	2013-1	2013-2
Tabaco	91.1	89.6	92.6	90.4	91.2	92.1	93.0	90.9	92.5	88.6	90.9	84.8	81.3	85.6	90.0	87.6	89.3	81.1	88.2
Alcohol	90.3	87.3	90.3	91.5	92.7	93.8	94.8	89.4	91.4	88.3	92.1	87.9	90.2	90.9	92.5	89.0	92.8	84.7	88.2
Cannabis	69.9	69.0	72.0	70.5	67.9	67.1	73.7	63.8	70.9	63.9	71.0	63.8	62.7	68.5	69.5	66.6	69.9	59.2	73.8
Inhalables	49.4	50.0	45.1	46.3	46.2	49.7	47.4	50.0	52.7	50.9	57.5	59.3	56.3	57.2	57.3	61.5	64.9	65.0	56.1
Cocaína	65.8	58.2	67.3	70.1	65.3	61.3	59.2	44.1	53.1	37.9	37.3	27.9	34.2	35.9	37.7	29.8	36.1	18.7	28.5
Crack	7.8	12.0	10.9	13.9	22.9	34.2	32.4	32.9	34.9	31.0	25.0	20.0	24.1	23.5	31.4	21.1	21.6	10.0	10.5
Metanfetaminas	3.7	3.8	7.0	6.4	8.0	7.9	7.5	2.6	4.5	2.9	3.6	3.4	2.2	2.8	4.2	3.9	3.1	1.3	3.6
Éxtasis	1.5	0.9	1.6	0.7	2.3	1.0	4.2	2.1	2.1	2.1	2.8	3.1	3.8	4.1	3.3	2.2	2.8	2.1	2.3
Benzodiacepinas	21.2	26.6	18.3	24.6	17.9	15.4	12.7	7.9	8.2	9.5	7.9	4.5	9.5	13.3	14.6	9.0	20.4	16.3	16.4
Heroína	3.3	2.2	2.3	1.4	3.4	3.1	2.3	0.9	2.1	0.3	1.2	1.4	1.3	1.1	1.3	0.3	0.6	0.5	0.7
Alucinógenos	4.8	2.8	5.1	2.5	5.0	4.8	4.2	2.1	3.4	1.9	5.6	5.2	5.1	8.6	7.5	5.1	7.8	5.8	5.9

# Consumo alguna vez en la vida de las principales drogas reportadas por usuarios de drogas ilícitas en tratamiento en CIJ del Estado de Colima

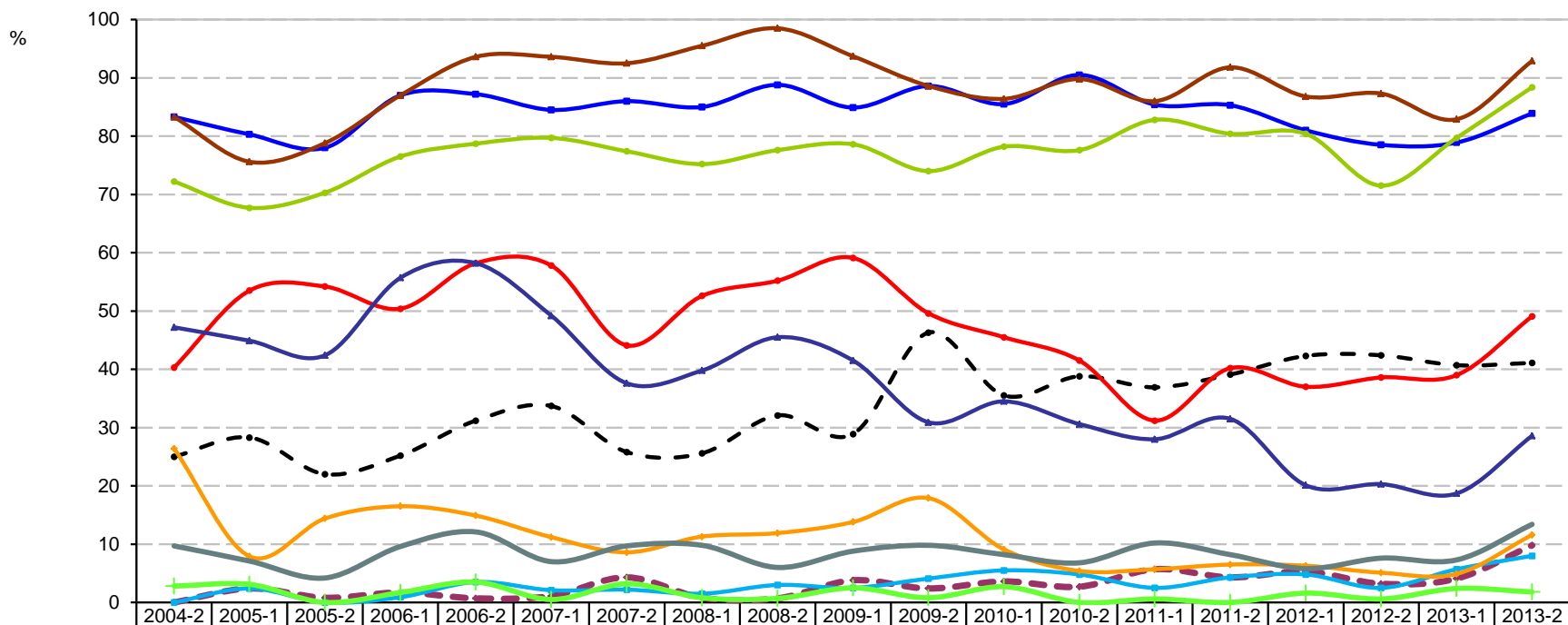
## Segundo semestre de 2004 – Segundo semestre de 2013



	2004-2	2005-1	2005-2	2006-1	2006-2	2007-1	2007-2	2008-1	2008-2	2009-1	2009-2	2010-1	2010-2	2011-1	2011-2	2012-1	2012-2	2013-1	2013-2
Tabaco	87.4	85.9	87.9	84.6	91.1	89.6	88.8	89.3	90.9	91.9	88.0	81.6	87.5	91.2	84.6	82.2	82.6	82.8	77.5
Alcohol	87.4	87.5	89.0	91.5	92.1	92.5	93.6	93.0	94.1	96.8	93.3	85.2	89.3	92.3	89.7	79.3	77.5	78.9	74.0
Cannabis	77.5	65.8	70.5	68.7	66.5	72.9	73.8	69.3	79.5	85.5	76.9	81.1	84.3	85.2	83.3	85.6	81.1	82.3	82.7
Inhalables	11.5	10.3	12.1	14.9	17.2	15.0	16.6	16.0	17.4	22.6	20.2	10.7	14.6	18.3	15.8	17.8	14.0	9.7	9.0
Cocaína	59.2	62.5	55.5	54.7	56.2	55.7	56.7	64.8	59.8	53.6	62.5	36.5	44.1	45.4	37.2	39.7	35.2	33.1	27.7
Crack	7.3	7.6	10.4	7.0	8.4	5.7	4.3	10.2	9.6	4.8	7.7	4.9	6.8	9.5	7.7	7.5	5.2	6.2	4.2
Metanfetaminas	51.3	63.6	61.8	55.2	61.1	66.4	63.1	50.0	55.7	48.4	56.7	27.0	40.2	41.2	38.5	49.4	51.6	49.8	50.9
Éxtasis	2.1	0.5	1.2	0.5	2.5	0.4	1.1	0.4	1.4	1.6	1.0	3.3	3.6	4.2	3.4	3.2	2.6	5.5	8.0
Benzodiacepinas	9.4	9.2	5.8	12.4	10.3	11.1	11.8	10.2	7.3	8.1	8.7	4.9	7.8	11.3	7.3	14.4	12.7	10.0	8.0
Heroína	6.3	3.8	2.9	5.5	2.5	10.7	7.0	9.8	8.2	12.5	7.2	9.0	9.6	7.4	6.0	19.3	15.0	15.7	12.8
Alucinógenos	5.8	6.0	3.5	5.0	6.9	3.9	3.7	4.5	5.0	10.1	7.7	7.8	5.7	6.0	5.1	9.8	9.3	6.7	7.6

# Consumo alguna vez en la vida de las principales drogas reportadas por usuarios de drogas ilícitas en tratamiento en CIJ del Estado de Chiapas

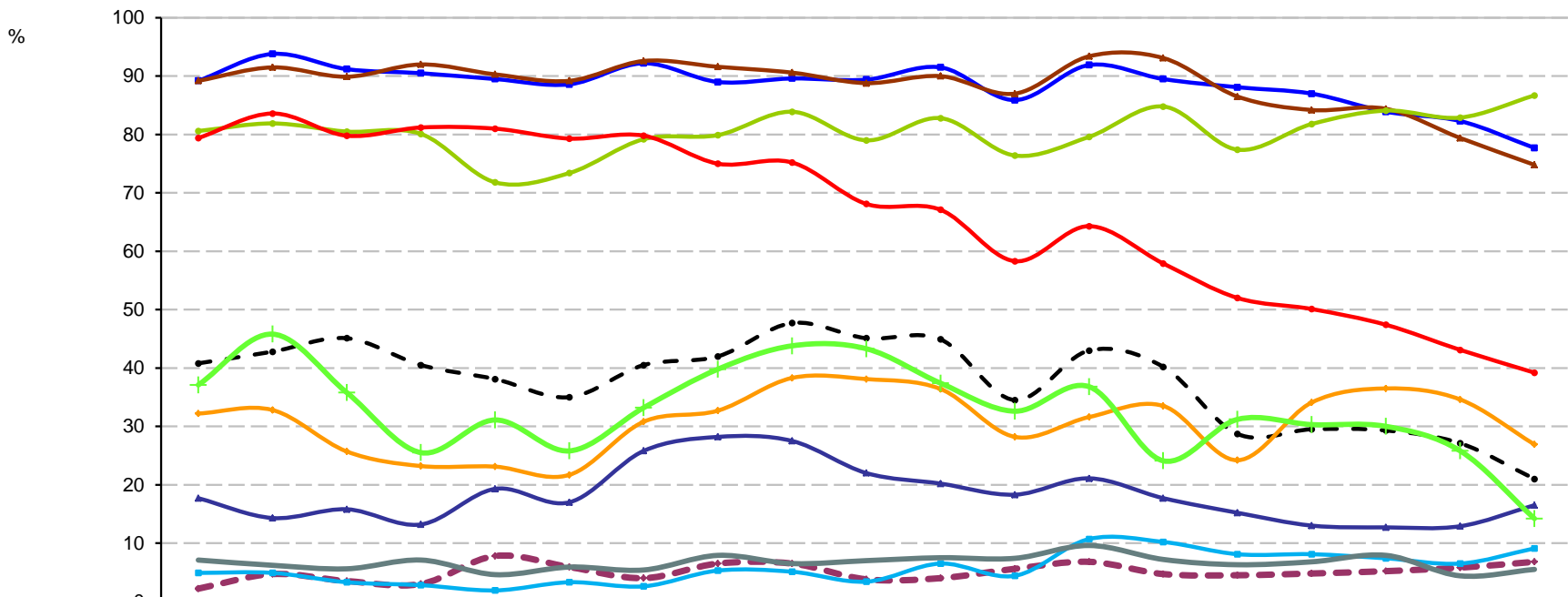
## Segundo semestre de 2004 – Segundo semestre de 2013



	2004-2	2005-1	2005-2	2006-1	2006-2	2007-1	2007-2	2008-1	2008-2	2009-1	2009-2	2010-1	2010-2	2011-1	2011-2	2012-1	2012-2	2013-1	2013-2
Tabaco	83.3	80.3	78.0	87.0	87.2	84.5	86.0	85.0	88.8	84.9	88.6	85.5	90.5	85.4	85.3	81.0	78.5	78.9	83.9
Alcohol	83.3	75.6	78.8	87.0	93.6	93.6	92.5	95.5	98.5	93.7	88.6	86.4	89.8	86.0	91.8	86.8	87.3	82.9	92.9
Cannabis	72.2	67.7	70.3	76.5	78.7	79.7	77.4	75.2	77.6	78.6	74.0	78.2	77.6	82.8	80.4	80.4	71.5	79.7	88.4
Inhalables	25.0	28.3	22.0	25.2	31.2	33.7	25.8	25.6	32.1	28.9	46.3	35.5	38.8	36.9	39.1	42.3	42.4	40.7	41.1
Cocaína	40.3	53.5	54.2	50.4	58.2	57.8	44.1	52.6	55.2	59.1	49.6	45.5	41.5	31.2	40.2	37.0	38.6	39.0	49.1
Crack	47.2	44.9	42.4	55.7	58.2	49.2	37.6	39.8	45.5	41.5	30.9	34.5	30.6	28.0	31.5	20.1	20.3	18.7	28.6
Metanfetaminas	0.0	2.4	0.8	1.7	0.7	1.1	4.3	0.8	0.7	3.8	2.4	3.6	2.7	5.7	4.3	5.3	3.2	4.1	9.8
Éxtasis	0.0	2.4	0.0	0.9	3.5	2.1	2.2	1.5	3.0	2.5	4.1	5.5	4.8	2.5	4.3	4.8	2.5	5.7	8.0
Benzodiacepinas	26.4	7.9	14.4	16.5	14.9	11.2	8.6	11.3	11.9	13.8	17.9	9.1	5.4	5.7	6.5	6.3	5.1	4.9	11.6
Heroína	2.8	3.1	0.0	1.7	3.5	0.5	3.2	0.8	0.7	2.5	0.8	2.7	0.0	0.6	0.0	1.6	0.6	2.4	1.8
Alucinógenos	9.7	7.1	4.2	9.6	12.1	7.0	9.7	9.8	6.0	8.8	9.8	8.2	6.8	10.2	8.2	5.8	7.6	7.3	13.4

# Consumo alguna vez en la vida de las principales drogas reportadas por usuarios de drogas ilícitas en tratamiento en CIJ del Estado de Chihuahua

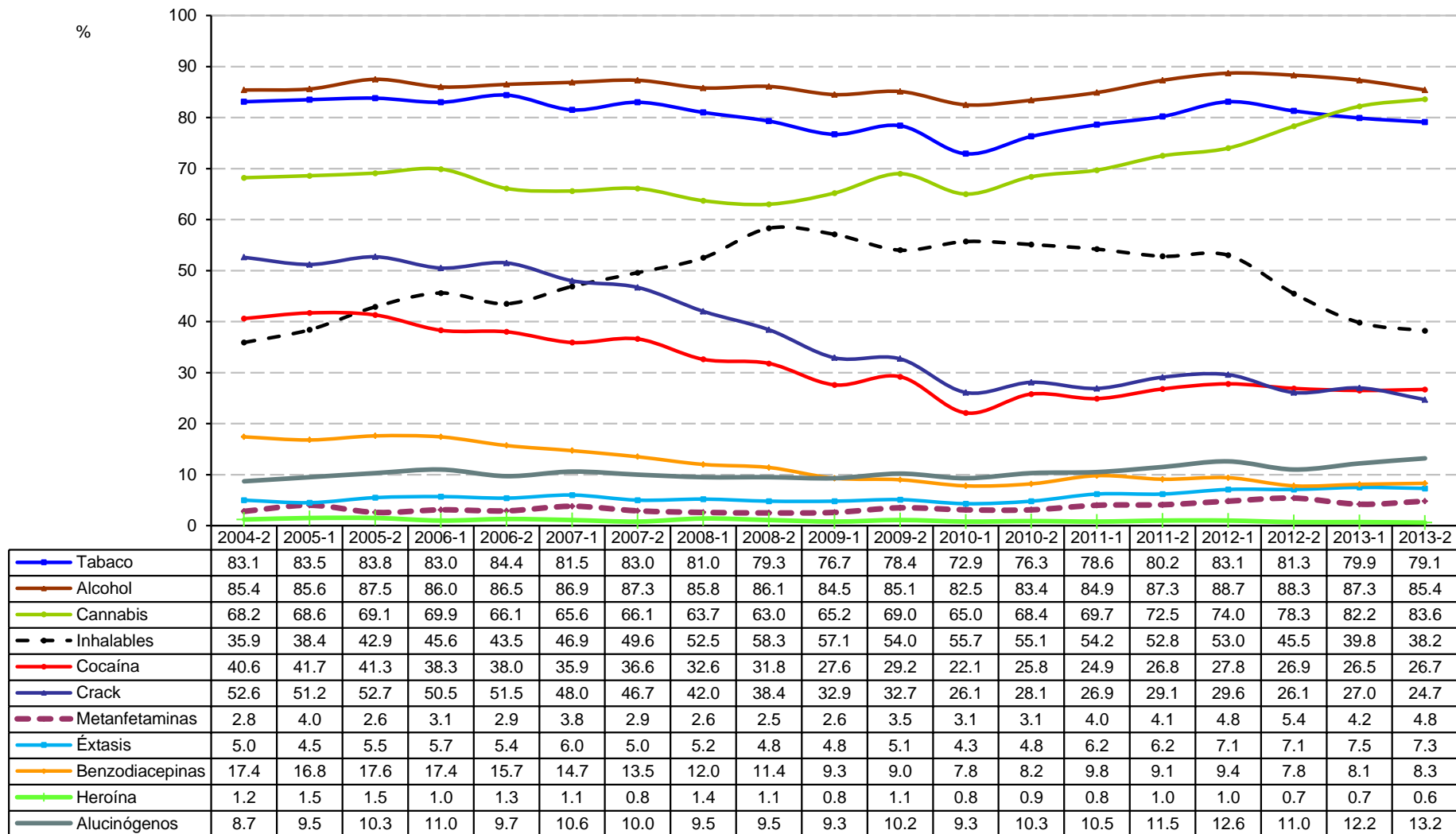
## Segundo semestre de 2004 – Segundo semestre de 2013



	2004-2	2005-1	2005-2	2006-1	2006-2	2007-1	2007-2	2008-1	2008-2	2009-1	2009-2	2010-1	2010-2	2011-1	2011-2	2012-1	2012-2	2013-1	2013-2
Tabaco	89.2	93.8	91.2	90.5	89.5	88.6	92.2	89.0	89.6	89.4	91.5	85.9	91.9	89.5	88.1	87.0	83.9	82.3	77.7
Alcohol	89.2	91.5	89.9	92.0	90.3	89.2	92.6	91.6	90.6	88.8	90.0	87.0	93.4	93.1	86.5	84.2	84.4	79.4	74.8
Cannabis	80.6	81.9	80.5	80.1	71.8	73.4	79.2	79.9	83.9	79.0	82.8	76.4	79.6	84.8	77.4	81.8	84.1	82.9	86.7
Inhalables	40.8	42.8	45.1	40.5	38.1	35.0	40.5	42.0	47.7	45.1	44.9	34.5	43.0	40.2	28.7	29.5	29.3	27.1	21.0
Cocaína	79.4	83.6	79.8	81.2	81.0	79.3	79.8	75.0	75.2	68.1	67.1	58.3	64.3	57.9	52.0	50.1	47.4	43.1	39.2
Crack	17.7	14.3	15.8	13.2	19.3	17.0	25.8	28.2	27.5	22.0	20.2	18.3	21.1	17.7	15.2	13.0	12.7	12.9	16.5
Metanfetaminas	2.2	4.7	3.5	3.0	7.8	5.9	4.0	6.5	6.5	3.8	4.0	5.6	6.8	4.7	4.5	4.8	5.2	5.8	6.8
Éxtasis	4.9	4.9	3.3	2.8	1.9	3.3	2.6	5.3	5.1	3.4	6.5	4.4	10.7	10.2	8.1	8.1	7.4	6.5	9.1
Benzodiacepinas	32.2	32.8	25.7	23.2	23.1	21.7	30.8	32.7	38.3	38.1	36.4	28.2	31.6	33.5	24.2	34.1	36.5	34.6	26.9
Heroína	37.1	45.8	35.8	25.5	31.1	25.8	33.2	39.8	43.8	43.3	37.4	32.6	36.8	24.1	31.2	30.3	30.0	25.8	14.2
Alucinógenos	7.1	6.2	5.6	7.1	4.6	5.9	5.4	7.9	6.5	7.0	7.5	7.4	9.6	7.2	6.3	6.8	7.9	4.4	5.5

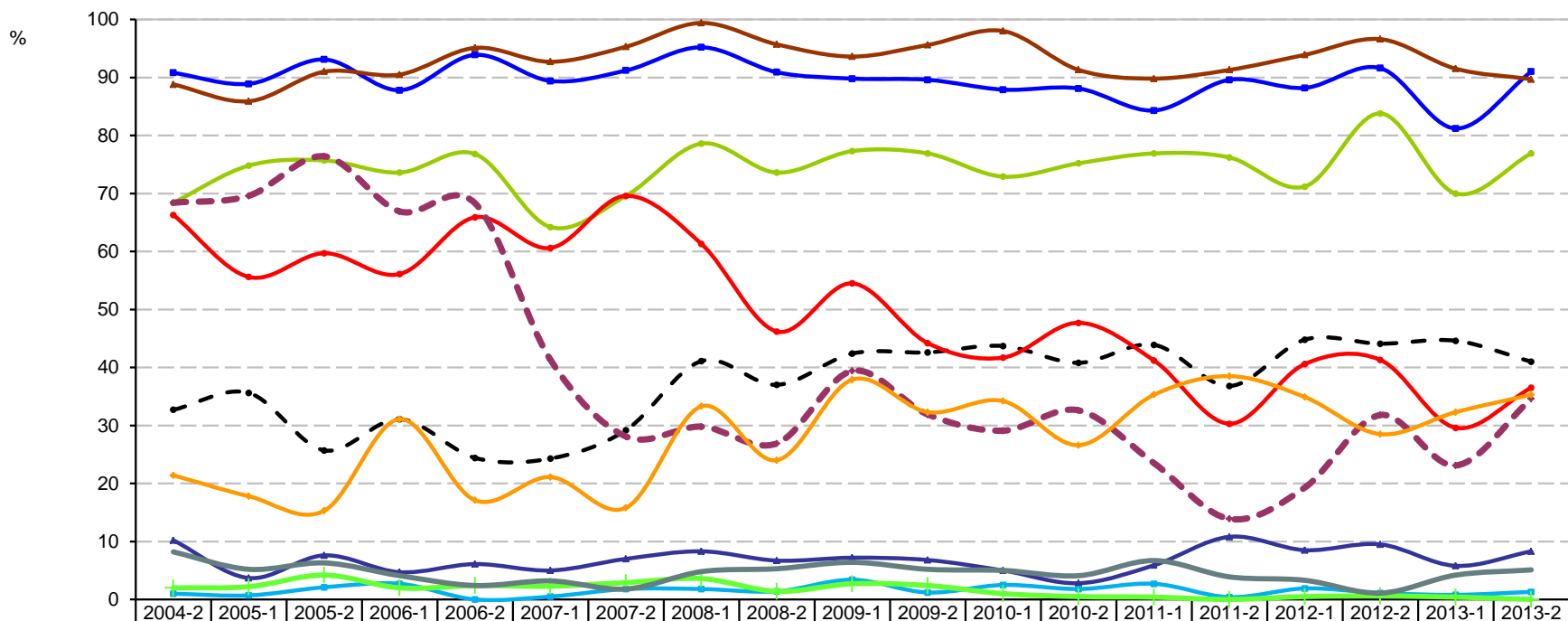
# Consumo alguna vez en la vida de las principales drogas reportadas por usuarios de drogas ilícitas en tratamiento en CIJ del Distrito Federal

## Segundo semestre de 2004 – Segundo semestre de 2013



# Consumo alguna vez en la vida de las principales drogas reportadas por usuarios de drogas ilícitas en tratamiento en CIJ del Estado de Durango

## Segundo semestre de 2004 – Segundo semestre de 2013

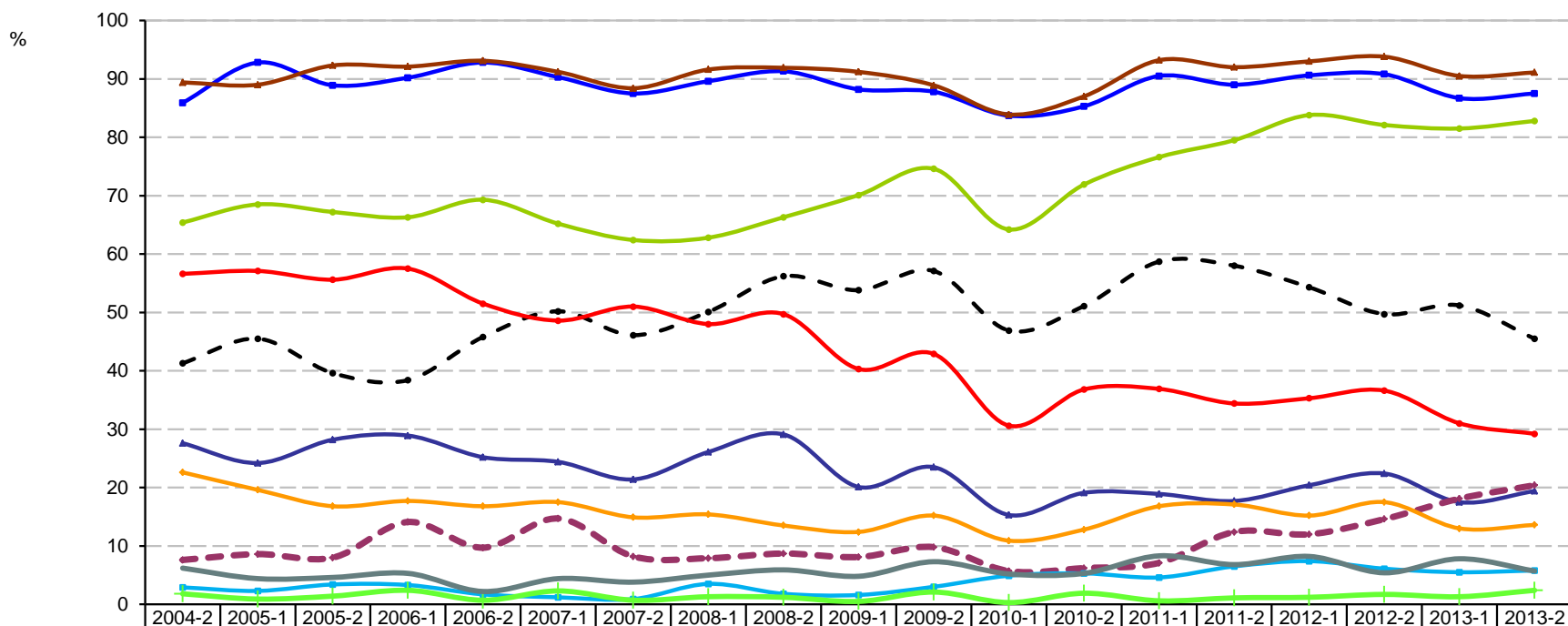


	2004-2	2005-1	2005-2	2006-1	2006-2	2007-1	2007-2	2008-1	2008-2	2009-1	2009-2	2010-1	2010-2	2011-1	2011-2	2012-1	2012-2	2013-1	2013-2
Tabaco	90.8	88.9	93.1	87.8	93.9	89.4	91.2	95.2	90.9	89.8	89.6	87.9	88.1	84.3	89.6	88.2	91.6	81.2	91.0
Alcohol	88.8	85.9	91.0	90.5	95.1	92.7	95.3	99.4	95.7	93.6	95.6	98.0	91.3	89.8	91.3	93.9	96.6	91.5	89.7
Cannabis	68.4	74.8	75.7	73.6	76.8	64.2	69.6	78.6	73.6	77.3	76.9	72.9	75.2	76.9	76.2	71.2	83.8	70.0	76.9
Inhalables	32.7	35.6	25.7	31.1	24.4	24.3	29.2	41.1	37.0	42.4	42.6	43.7	40.8	43.9	36.8	44.8	44.1	44.6	41.0
Cocaína	66.3	55.6	59.7	56.1	65.9	60.6	69.6	61.3	46.2	54.5	44.2	41.7	47.7	41.2	30.3	40.6	41.3	29.6	36.5
Crack	10.2	3.7	7.6	4.7	6.1	5.0	7.0	8.3	6.7	7.2	6.8	5.0	2.8	5.9	10.8	8.5	9.5	5.8	8.3
Metanfetaminas	68.4	69.6	76.4	66.9	68.3	41.3	28.1	29.8	26.9	39.4	31.9	29.1	32.6	23.5	13.9	19.3	31.8	23.1	34.6
Éxtasis	1.0	0.7	2.1	2.7	0.0	0.5	1.8	1.8	1.4	3.4	1.2	2.5	1.8	2.7	0.4	1.9	1.1	0.8	1.3
Benzodiacepinas	21.4	17.8	15.3	31.1	17.1	21.1	15.8	33.3	24.0	37.9	32.3	34.2	26.6	35.3	38.5	34.9	28.5	32.3	35.3
Heroína	2.0	2.2	4.2	2.0	2.4	2.3	2.9	3.6	1.4	2.7	2.4	1.0	0.5	0.4	0.0	0.5	0.6	0.4	0.0
Alucinógenos	8.2	5.2	6.3	4.1	2.4	3.2	1.8	4.8	5.3	6.4	5.2	5.0	4.1	6.7	3.9	3.3	1.1	4.2	5.1



# Consumo alguna vez en la vida de las principales drogas reportadas por usuarios de drogas ilícitas en tratamiento en CIJ del Estado de Guanajuato

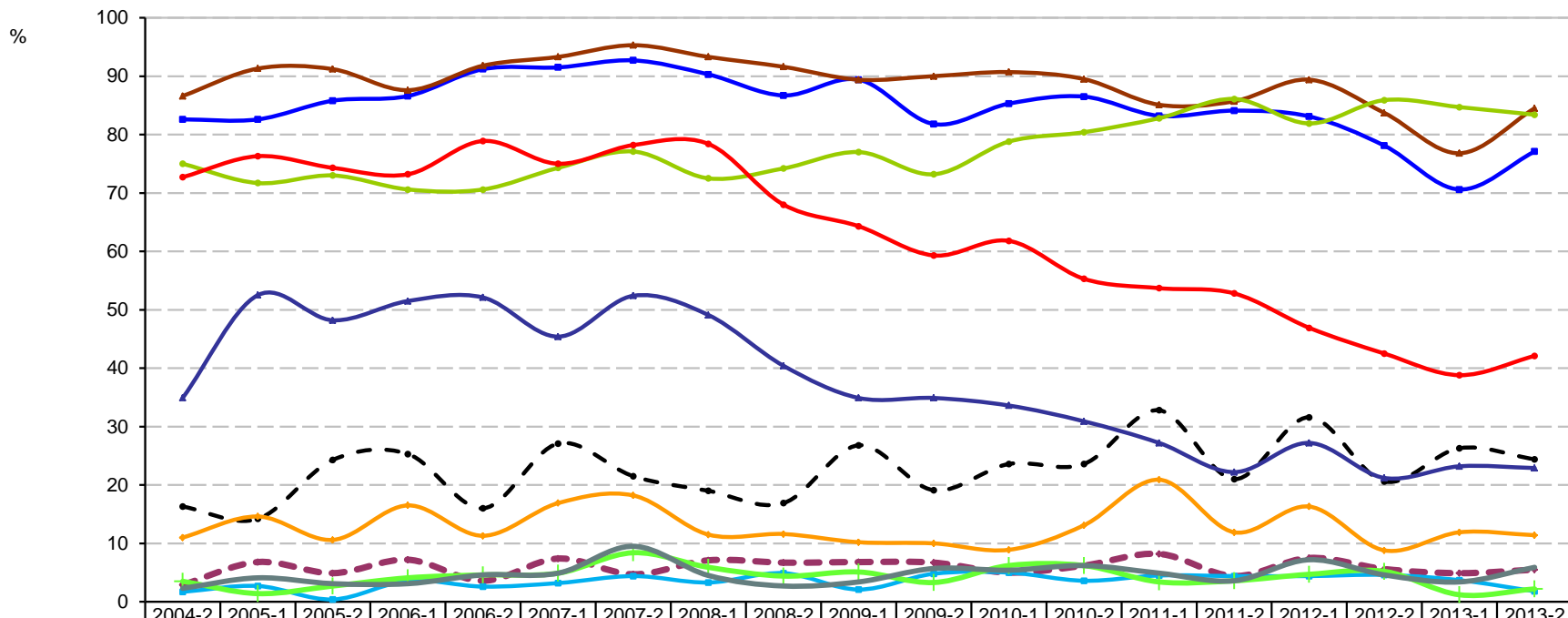
## Segundo semestre de 2004 – Segundo semestre de 2013



	2004-2	2005-1	2005-2	2006-1	2006-2	2007-1	2007-2	2008-1	2008-2	2009-1	2009-2	2010-1	2010-2	2011-1	2011-2	2012-1	2012-2	2013-1	2013-2
Tabaco	85.9	92.8	88.9	90.2	92.8	90.3	87.5	89.6	91.3	88.2	87.8	83.7	85.3	90.5	89.0	90.6	90.8	86.7	87.5
Alcohol	89.4	89.0	92.3	92.1	93.1	91.2	88.4	91.6	91.9	91.2	88.9	83.9	87.0	93.2	92.0	93.0	93.8	90.5	91.1
Cannabis	65.4	68.5	67.2	66.3	69.3	65.2	62.4	62.8	66.3	70.1	74.6	64.2	71.9	76.6	79.5	83.8	82.1	81.5	82.8
Inhalables	41.3	45.5	39.6	38.4	45.8	50.2	46.1	50.1	56.2	53.8	57.1	46.9	51.1	58.7	58.0	54.3	49.7	51.2	45.5
Cocaína	56.6	57.1	55.6	57.5	51.5	48.6	51.0	48.0	49.7	40.3	42.9	30.6	36.8	36.9	34.4	35.3	36.6	31.0	29.2
Crack	27.6	24.2	28.2	28.9	25.2	24.4	21.4	26.1	29.1	20.1	23.5	15.3	19.1	18.9	17.7	20.4	22.4	17.5	19.4
Metanfetaminas	7.6	8.6	8.0	14.1	9.7	14.7	8.2	7.9	8.7	8.1	9.8	5.7	6.2	7.1	12.4	12.0	14.6	18.1	20.4
Éxtasis	2.9	2.3	3.4	3.3	1.7	1.2	0.9	3.5	1.8	1.6	3.0	4.9	5.3	4.6	6.5	7.4	6.1	5.5	5.8
Benzodiacepinas	22.6	19.6	16.8	17.7	16.8	17.5	14.9	15.4	13.5	12.4	15.2	10.9	12.8	16.8	17.1	15.2	17.5	13.0	13.6
Heroína	1.8	0.9	1.4	2.4	0.7	2.3	0.7	1.3	1.2	0.5	2.1	0.3	1.9	0.6	1.1	1.2	1.7	1.3	2.4
Alucinógenos	6.2	4.4	4.6	5.3	2.2	4.4	3.8	5.0	5.9	4.8	7.3	5.2	5.3	8.3	6.8	8.2	5.4	7.8	5.7

# Consumo alguna vez en la vida de las principales drogas reportadas por usuarios de drogas ilícitas en tratamiento en CIJ del Estado de Guerrero

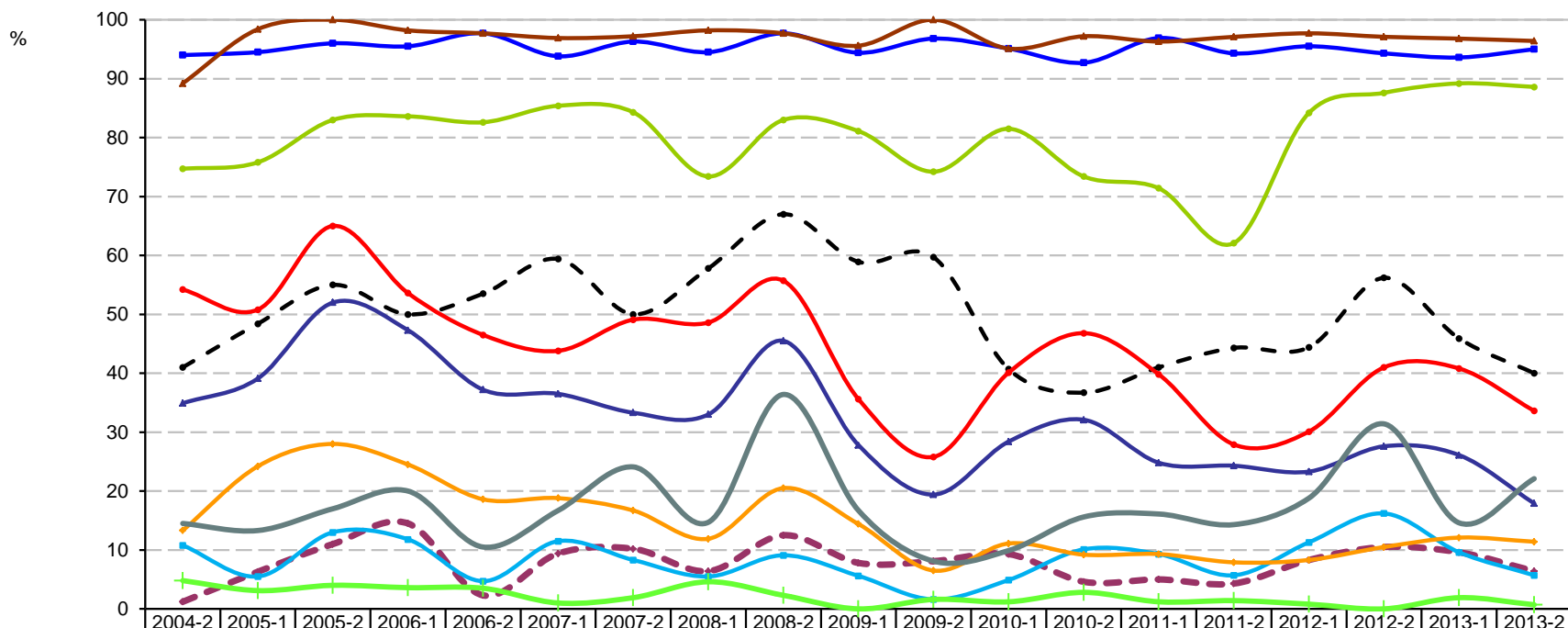
## Segundo semestre de 2004 – Segundo semestre de 2013



	2004-2	2005-1	2005-2	2006-1	2006-2	2007-1	2007-2	2008-1	2008-2	2009-1	2009-2	2010-1	2010-2	2011-1	2011-2	2012-1	2012-2	2013-1	2013-2
Tabaco	82.6	82.6	85.8	86.6	91.2	91.5	92.7	90.3	86.7	89.4	81.8	85.3	86.5	83.2	84.1	83.1	78.1	70.6	77.1
Alcohol	86.6	91.3	91.2	87.6	91.8	93.3	95.3	93.3	91.6	89.4	90.0	90.7	89.5	85.1	85.7	89.4	83.7	76.8	84.5
Cannabis	75.0	71.7	73.0	70.6	70.6	74.3	77.1	72.5	74.2	77.0	73.2	78.8	80.4	82.8	86.1	81.9	85.9	84.7	83.4
Inhalables	16.3	14.2	24.3	25.3	16.0	27.1	21.5	19.0	16.9	26.8	19.1	23.6	23.6	32.8	21.0	31.6	20.6	26.3	24.4
Cocaína	72.7	76.3	74.3	73.2	78.9	75.0	78.2	78.4	68.0	64.3	59.3	61.8	55.3	53.7	52.8	46.9	42.5	38.8	42.1
Crack	34.9	52.5	48.2	51.5	52.1	45.4	52.4	49.1	40.4	34.9	34.9	33.6	30.9	27.2	22.2	27.2	21.2	23.2	22.9
Metanfetaminas	2.9	6.8	4.9	7.2	3.6	7.4	4.7	7.1	6.7	6.8	6.7	5.0	6.2	8.2	4.4	7.5	5.6	4.9	5.5
Éxtasis	1.7	2.7	0.4	3.6	2.6	3.2	4.4	3.3	4.9	2.1	4.8	5.0	3.6	4.5	4.4	4.4	4.6	3.7	1.8
Benzodiacepinas	11.0	14.6	10.6	16.5	11.3	16.9	18.2	11.5	11.6	10.2	10.0	8.9	13.1	20.9	11.9	16.3	8.8	11.9	11.4
Heroína	3.5	1.4	2.7	4.1	4.6	4.9	8.4	5.9	4.4	5.1	3.3	6.2	6.2	3.4	3.6	4.7	5.2	1.2	2.2
Alucinógenos	2.3	4.1	3.1	3.1	4.6	4.9	9.5	4.5	2.7	3.4	5.7	5.4	6.2	4.9	3.6	7.2	4.6	3.4	5.9

# Consumo alguna vez en la vida de las principales drogas reportadas por usuarios de drogas ilícitas en tratamiento en CIJ del Estado de Hidalgo (CIJ Pachuca)

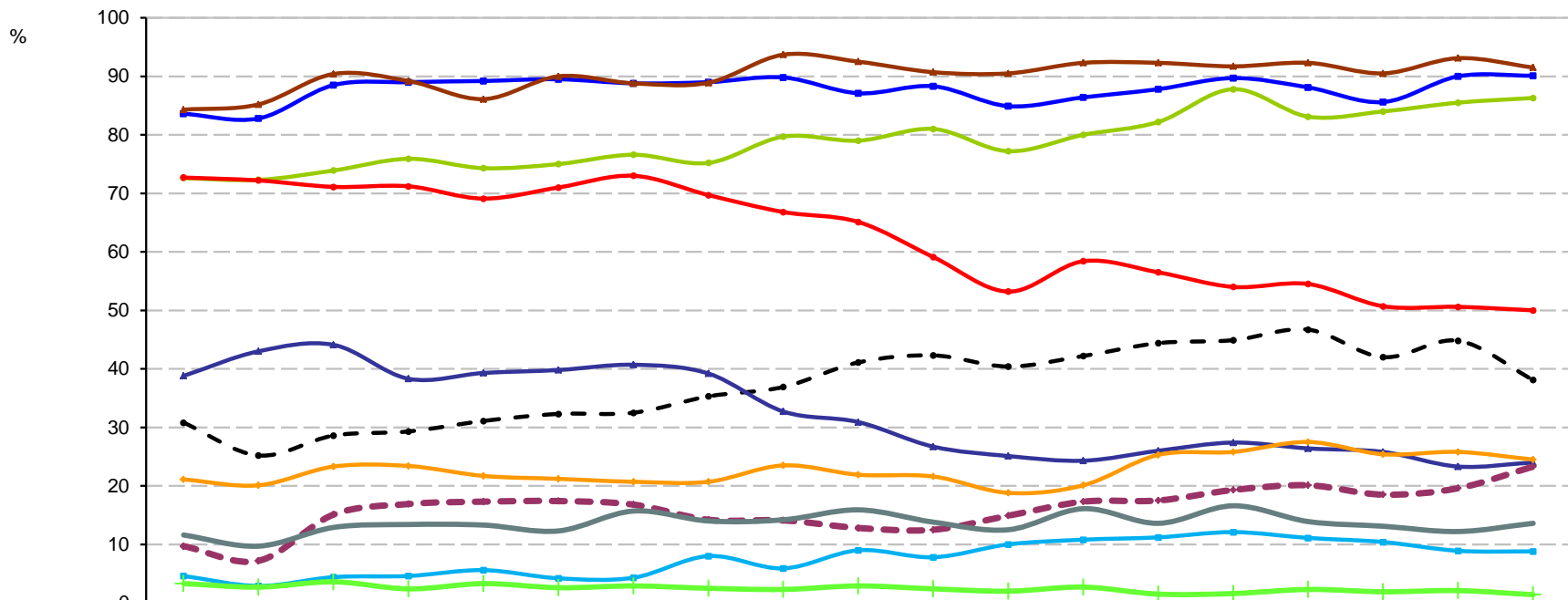
## Segundo semestre de 2004 – Segundo semestre de 2013



	2004-2	2005-1	2005-2	2006-1	2006-2	2007-1	2007-2	2008-1	2008-2	2009-1	2009-2	2010-1	2010-2	2011-1	2011-2	2012-1	2012-2	2013-1	2013-2
Tabaco	94.0	94.5	96.0	95.5	97.7	93.8	96.3	94.5	97.7	94.4	96.8	95.1	92.7	96.9	94.3	95.5	94.3	93.6	95.0
Alcohol	89.2	98.4	100.0	98.2	97.7	96.9	97.2	98.2	97.7	95.6	100.0	95.1	97.2	96.3	97.1	97.7	97.1	96.8	96.4
Cannabis	74.7	75.8	83.0	83.6	82.6	85.4	84.3	73.4	83.0	81.1	74.2	81.5	73.4	71.4	62.1	84.2	87.6	89.2	88.6
Inhalables	41.0	48.4	55.0	50.0	53.5	59.4	50.0	57.8	67.0	58.9	59.7	40.7	36.7	41.0	44.3	44.4	56.2	45.9	40.0
Cocaína	54.2	50.8	65.0	53.6	46.5	43.8	49.1	48.6	55.7	35.6	25.8	40.1	46.8	39.8	27.9	30.1	41.0	40.8	33.6
Crack	34.9	39.1	52.0	47.3	37.2	36.5	33.3	33.0	45.5	27.8	19.4	28.4	32.1	24.8	24.3	23.3	27.6	26.1	17.9
Metanfetaminas	1.2	6.3	11.0	14.5	2.3	9.4	10.2	6.4	12.5	7.8	8.1	9.3	4.6	5.0	4.3	8.3	10.5	9.6	6.4
Éxtasis	10.8	5.5	13.0	11.8	4.7	11.5	8.3	5.5	9.1	5.6	1.6	4.9	10.1	9.3	5.7	11.3	16.2	9.6	5.7
Benzodiacepinas	13.3	24.2	28.0	24.5	18.6	18.8	16.7	11.9	20.5	14.4	6.5	11.1	9.2	9.3	7.9	8.3	10.5	12.1	11.4
Heroína	4.8	3.1	4.0	3.6	3.5	1.0	1.9	4.6	2.3	0.0	1.6	1.2	2.8	1.2	1.4	0.8	0.0	1.9	0.7
Alucinógenos	14.5	13.3	17.0	20.0	10.5	16.7	24.1	14.7	36.4	16.7	8.1	9.9	15.6	16.1	14.3	18.8	31.4	14.6	22.1

# Consumo alguna vez en la vida de las principales drogas reportadas por usuarios de drogas ilícitas en tratamiento en CIJ del Estado de Jalisco

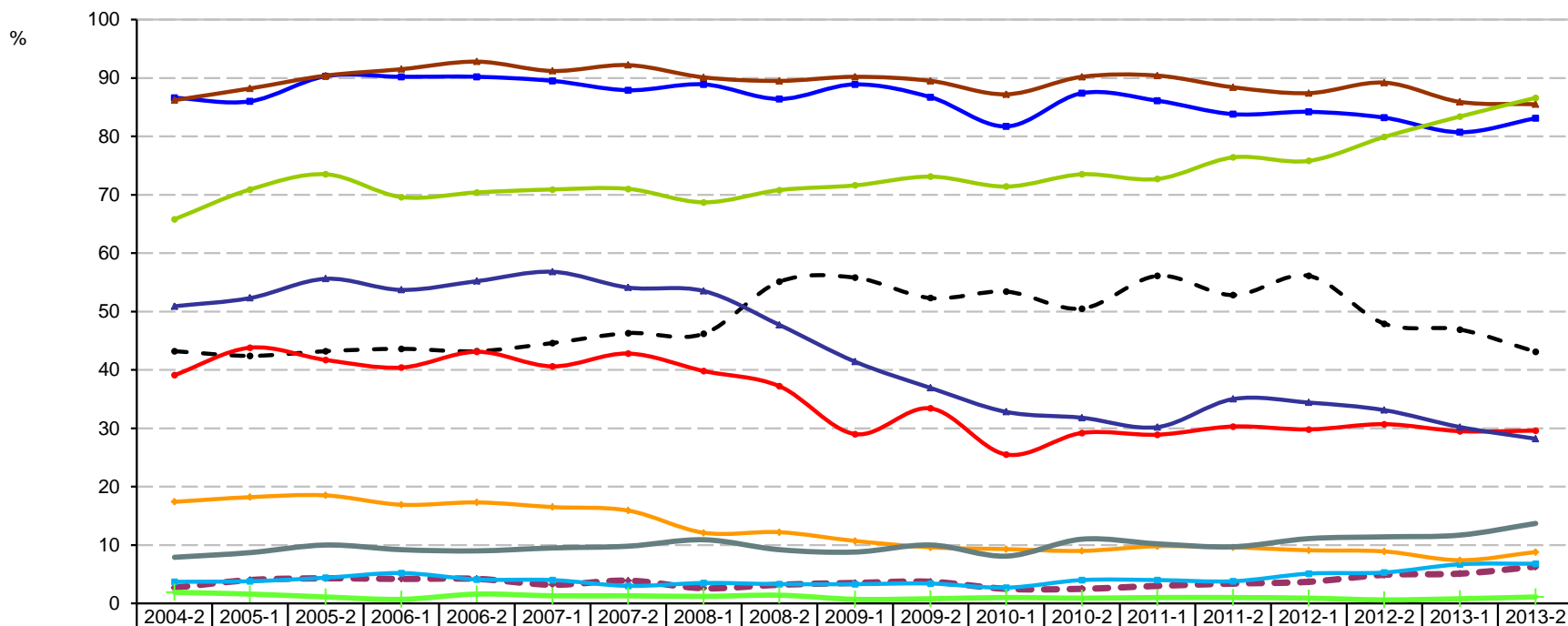
## Segundo semestre de 2004 – Segundo semestre de 2013



	2004-2	2005-1	2005-2	2006-1	2006-2	2007-1	2007-2	2008-1	2008-2	2009-1	2009-2	2010-1	2010-2	2011-1	2011-2	2012-1	2012-2	2013-1	2013-2
Tabaco	83.6	82.8	88.5	89.0	89.2	89.5	88.8	89.0	89.8	87.1	88.3	84.9	86.4	87.8	89.7	88.1	85.6	90.0	90.1
Alcohol	84.3	85.2	90.4	89.2	86.1	90.0	88.8	88.9	93.7	92.5	90.7	90.5	92.3	92.3	91.7	92.3	90.5	93.1	91.5
Cannabis	72.6	72.3	73.9	75.9	74.3	75.0	76.6	75.2	79.7	79.0	81.0	77.2	80.0	82.2	87.8	83.1	84.0	85.5	86.3
Inhalables	30.8	25.2	28.6	29.3	31.1	32.3	32.5	35.3	36.9	41.1	42.3	40.4	42.2	44.4	44.9	46.7	42.0	44.8	38.1
Cocaína	72.7	72.2	71.1	71.2	69.1	71.0	73.0	69.7	66.8	65.1	59.1	53.2	58.4	56.5	54.0	54.5	50.7	50.6	50.0
Crack	38.8	43.0	44.1	38.3	39.3	39.8	40.7	39.2	32.7	30.9	26.7	25.1	24.3	26.0	27.4	26.4	25.8	23.3	24.0
Metanfetaminas	9.7	7.2	15.1	16.9	17.3	17.4	16.8	14.2	14.1	12.8	12.5	14.9	17.3	17.5	19.3	20.1	18.5	19.6	23.3
Éxtasis	4.6	2.9	4.4	4.6	5.6	4.2	4.3	8.0	5.9	9.0	7.8	10.0	10.8	11.2	12.1	11.1	10.4	8.9	8.8
Benzodiacepinas	21.1	20.1	23.3	23.4	21.7	21.2	20.7	20.7	23.5	21.9	21.6	18.8	20.1	25.3	25.8	27.5	25.4	25.8	24.5
Heroína	3.3	2.7	3.6	2.4	3.3	2.6	2.9	2.5	2.3	2.9	2.4	2.0	2.7	1.5	1.6	2.3	1.9	2.1	1.4
Alucinógenos	11.6	9.7	12.9	13.4	13.3	12.3	15.7	14.0	14.2	15.9	13.8	12.5	16.1	13.6	16.6	13.9	13.1	12.2	13.6

# Consumo alguna vez en la vida de las principales drogas reportadas por usuarios de drogas ilícitas en tratamiento en CIJ del Estado de México

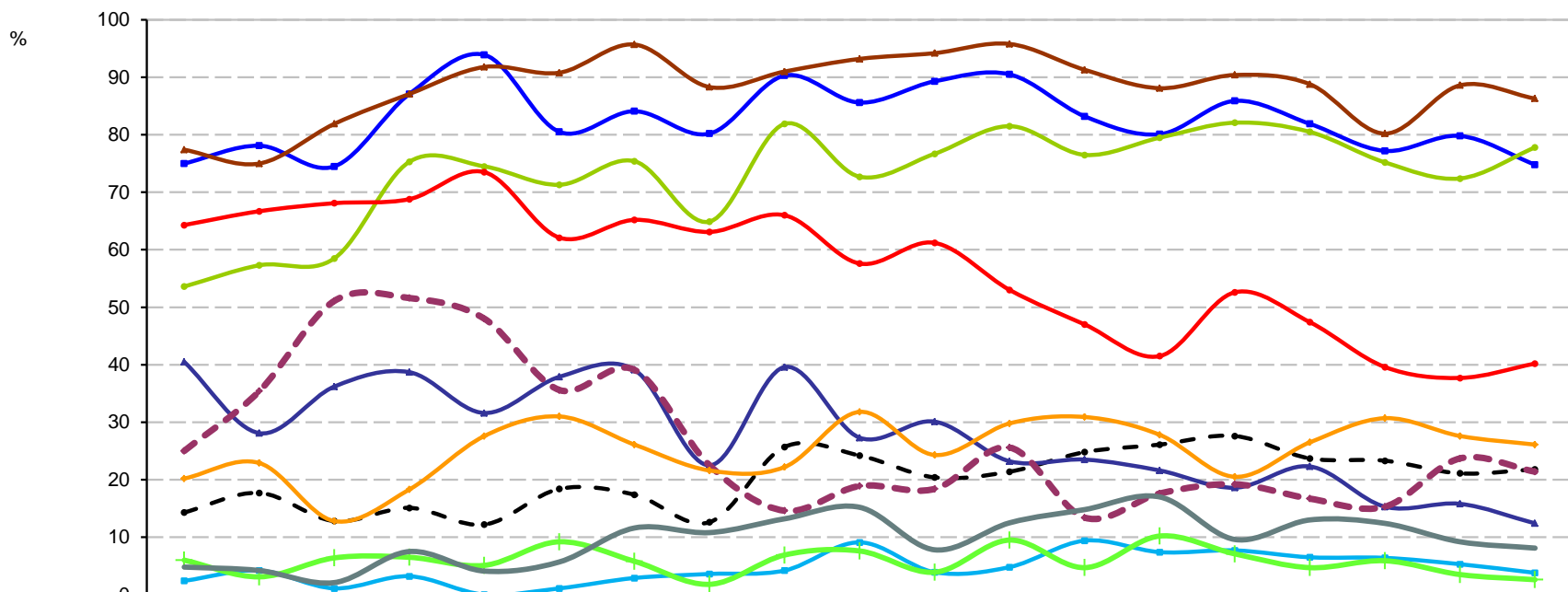
## Segundo semestre de 2004 – Segundo semestre de 2013



	2004-2	2005-1	2005-2	2006-1	2006-2	2007-1	2007-2	2008-1	2008-2	2009-1	2009-2	2010-1	2010-2	2011-1	2011-2	2012-1	2012-2	2013-1	2013-2
Tabaco	86.6	86.0	90.3	90.2	90.2	89.5	87.9	88.9	86.4	88.9	86.7	81.7	87.4	86.1	83.8	84.2	83.2	80.7	83.1
Alcohol	86.2	88.2	90.4	91.5	92.8	91.2	92.2	90.1	89.5	90.2	89.5	87.2	90.2	90.4	88.4	87.4	89.2	85.9	85.5
Cannabis	65.8	70.9	73.5	69.6	70.4	70.9	71.0	68.7	70.8	71.6	73.1	71.4	73.5	72.7	76.4	75.8	79.9	83.4	86.6
Inhalables	43.2	42.4	43.2	43.6	43.2	44.6	46.3	46.2	55.1	55.8	52.3	53.4	50.5	56.1	52.8	56.1	47.9	46.9	43.1
Cocaína	39.1	43.8	41.7	40.4	43.1	40.6	42.8	39.8	37.2	29.0	33.4	25.5	29.2	28.9	30.3	29.8	30.7	29.5	29.6
Crack	50.9	52.3	55.6	53.7	55.2	56.8	54.1	53.5	47.7	41.4	36.9	32.8	31.8	30.2	35.0	34.4	33.1	30.2	28.2
Metanfetaminas	2.7	4.0	4.3	4.2	4.2	3.2	3.9	2.6	3.2	3.5	3.7	2.5	2.5	3.0	3.4	3.7	4.9	5.1	6.3
Éxtasis	3.7	3.8	4.4	5.2	4.1	4.0	3.0	3.5	3.3	3.3	3.4	2.7	4.0	4.0	3.8	5.1	5.3	6.7	6.8
Benzodiacepinas	17.4	18.2	18.5	16.9	17.3	16.5	15.9	12.1	12.2	10.7	9.6	9.3	9.0	9.8	9.6	9.1	8.9	7.4	8.8
Heroína	1.9	1.6	1.1	0.7	1.6	1.3	1.3	1.2	1.4	0.7	0.8	1.0	0.9	1.0	1.0	0.9	0.6	0.8	1.1
Alucinógenos	7.9	8.7	10.0	9.2	9.0	9.5	9.8	10.9	9.2	8.8	10.0	8.1	11.0	10.2	9.7	11.1	11.4	11.7	13.7

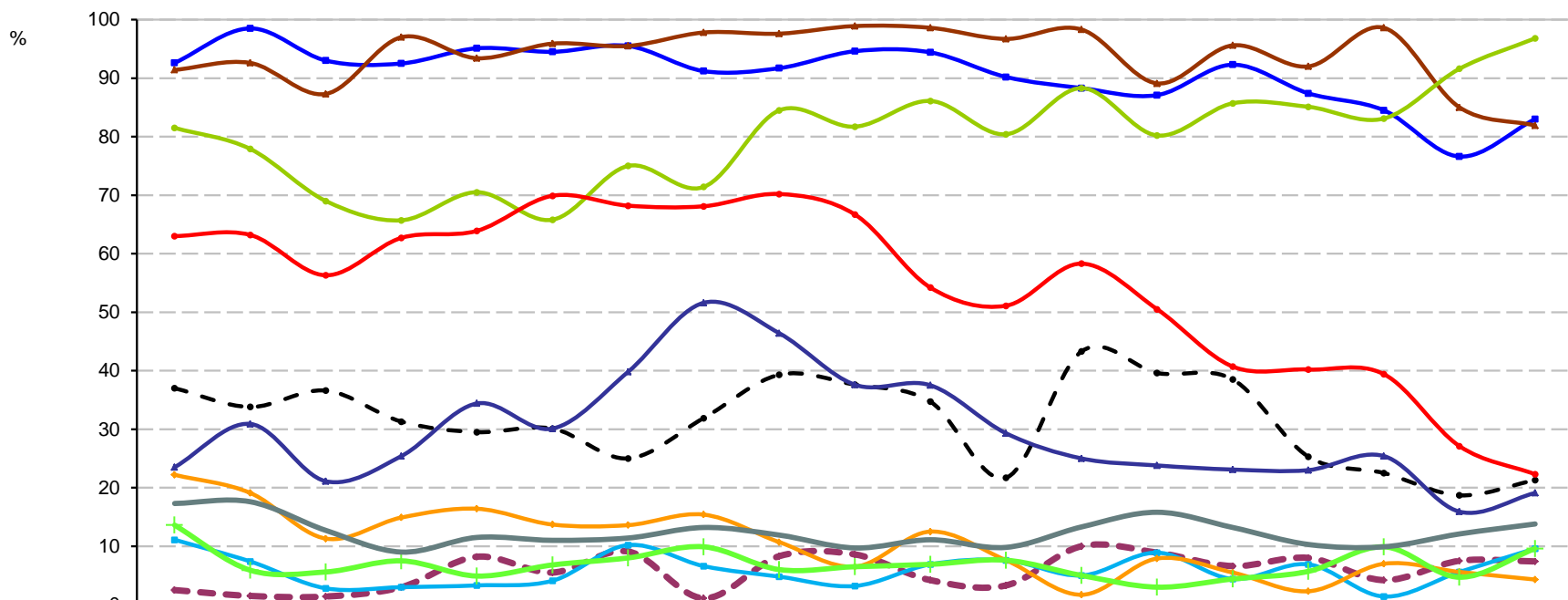
# Consumo alguna vez en la vida de las principales drogas reportadas por usuarios de drogas ilícitas en tratamiento en CIJ del Estado de Michoacán

## Segundo semestre de 2004 – Segundo semestre de 2013



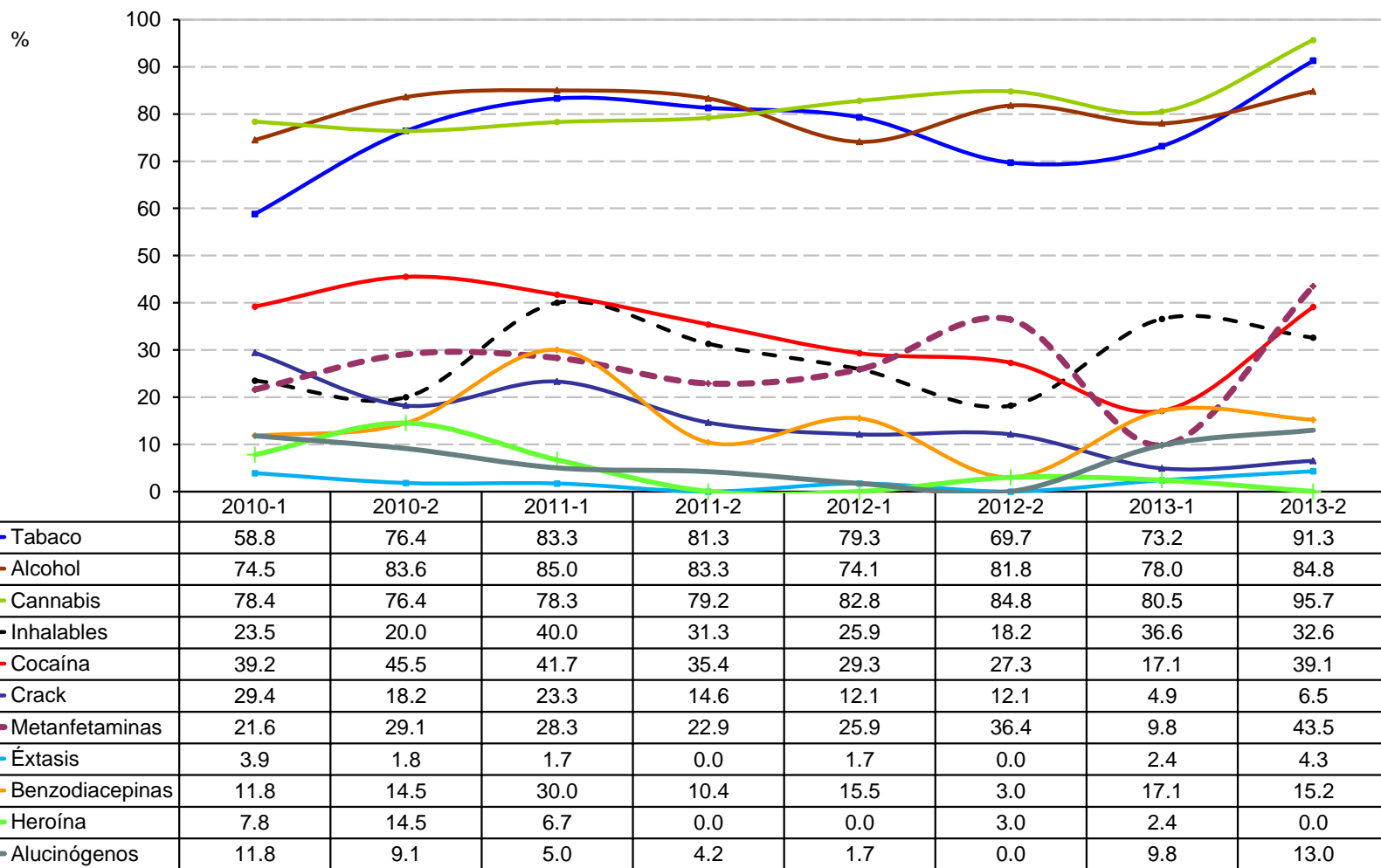
	2004-2	2005-1	2005-2	2006-1	2006-2	2007-1	2007-2	2008-1	2008-2	2009-1	2009-2	2010-1	2010-2	2011-1	2011-2	2012-1	2012-2	2013-1	2013-2
Tabaco	75.0	78.1	74.5	87.1	93.9	80.5	84.1	80.2	90.3	85.6	89.3	90.5	83.2	80.1	85.9	81.9	77.2	79.8	74.8
Alcohol	77.4	75.0	81.9	87.1	91.8	90.8	95.7	88.3	91.0	93.2	94.2	95.8	91.3	88.1	90.4	88.8	80.2	88.6	86.3
Cannabis	53.6	57.3	58.5	75.3	74.5	71.3	75.4	64.9	81.9	72.7	76.7	81.5	76.5	79.5	82.1	80.5	75.2	72.4	77.8
Inhalables	14.3	17.7	12.8	15.1	12.2	18.4	17.4	12.6	25.7	24.2	20.4	21.4	24.8	26.1	27.6	23.7	23.3	21.1	21.8
Cocaína	64.3	66.7	68.1	68.8	73.5	62.1	65.2	63.1	66.0	57.6	61.2	53.0	47.0	41.5	52.6	47.4	39.6	37.7	40.2
Crack	40.5	28.1	36.2	38.7	31.6	37.9	39.1	22.5	39.6	27.3	30.1	23.2	23.5	21.6	18.6	22.3	15.3	15.8	12.4
Metanfetaminas	25.0	35.4	51.1	51.6	48.0	35.6	39.1	22.5	14.6	18.9	18.4	25.6	13.4	17.6	19.2	16.7	15.3	23.7	21.4
Éxtasis	2.4	4.2	1.1	3.2	0.0	1.1	2.9	3.6	4.2	9.1	3.9	4.8	9.4	7.4	7.7	6.5	6.4	5.3	3.8
Benzodiacepinas	20.2	22.9	12.8	18.3	27.6	31.0	26.1	21.6	22.2	31.8	24.3	29.8	30.9	27.8	20.5	26.5	30.7	27.6	26.1
Heroína	6.0	3.1	6.4	6.5	5.1	9.2	5.8	1.8	6.9	7.6	3.9	9.5	4.7	10.2	7.1	4.7	5.9	3.5	2.6
Alucinógenos	4.8	4.2	2.1	7.5	4.1	5.7	11.6	10.8	13.2	15.2	7.8	12.5	14.8	17.0	9.6	13.0	12.4	9.2	8.1

Consumo alguna vez en la vida de las principales drogas reportadas por usuarios de drogas ilícitas en tratamiento en **CIJ del Estado de Morelos (CIJ Cuernavaca)**  
Segundo semestre de 2004 – Segundo semestre de 2013



	2004-2	2005-1	2005-2	2006-1	2006-2	2007-1	2007-2	2008-1	2008-2	2009-1	2009-2	2010-1	2010-2	2011-1	2011-2	2012-1	2012-2	2013-1	2013-2
Tabaco	92.6	98.5	93.0	92.5	95.1	94.5	95.5	91.2	91.7	94.6	94.4	90.2	88.3	87.1	92.3	87.4	84.5	76.6	83.0
Alcohol	91.4	92.6	87.3	97.0	93.4	95.9	95.5	97.8	97.6	98.9	98.6	96.7	98.3	89.1	95.6	92.0	98.6	85.0	81.9
Cannabis	81.5	77.9	69.0	65.7	70.5	65.8	75.0	71.4	84.5	81.7	86.1	80.4	88.3	80.2	85.7	85.1	83.1	91.6	96.8
Inhalables	37.0	33.8	36.6	31.3	29.5	30.1	25.0	31.9	39.3	37.6	34.7	21.7	43.3	39.6	38.5	25.3	22.5	18.7	21.3
Cocaína	63.0	63.2	56.3	62.7	63.9	69.9	68.2	68.1	70.2	66.7	54.2	51.1	58.3	50.5	40.7	40.2	39.4	27.1	22.3
Crack	23.5	30.9	21.1	25.4	34.4	30.1	39.8	51.6	46.4	37.6	37.5	29.3	25.0	23.8	23.1	23.0	25.4	15.9	19.1
Metanfetaminas	2.5	1.5	1.4	3.0	8.2	5.5	9.1	1.1	8.3	8.6	4.2	3.3	10.0	8.9	6.6	8.0	4.2	7.5	7.4
Éxtasis	11.1	7.4	2.8	3.0	3.3	4.1	10.2	6.6	4.8	3.2	6.9	7.6	5.0	8.9	4.4	6.9	1.4	5.6	9.6
Benzodiacepinas	22.2	19.1	11.3	14.9	16.4	13.7	13.6	15.4	10.7	6.5	12.5	7.6	1.7	7.9	5.5	2.3	7.0	5.6	4.3
Heroína	13.6	5.9	5.6	7.5	4.9	6.8	8.0	9.9	6.0	6.5	6.9	7.6	5.0	3.0	4.4	5.7	9.9	4.7	9.6
Alucinógenos	17.3	17.6	12.7	9.0	11.5	11.0	11.4	13.2	11.9	9.7	11.1	9.8	13.3	15.8	13.2	10.3	9.9	12.1	13.8

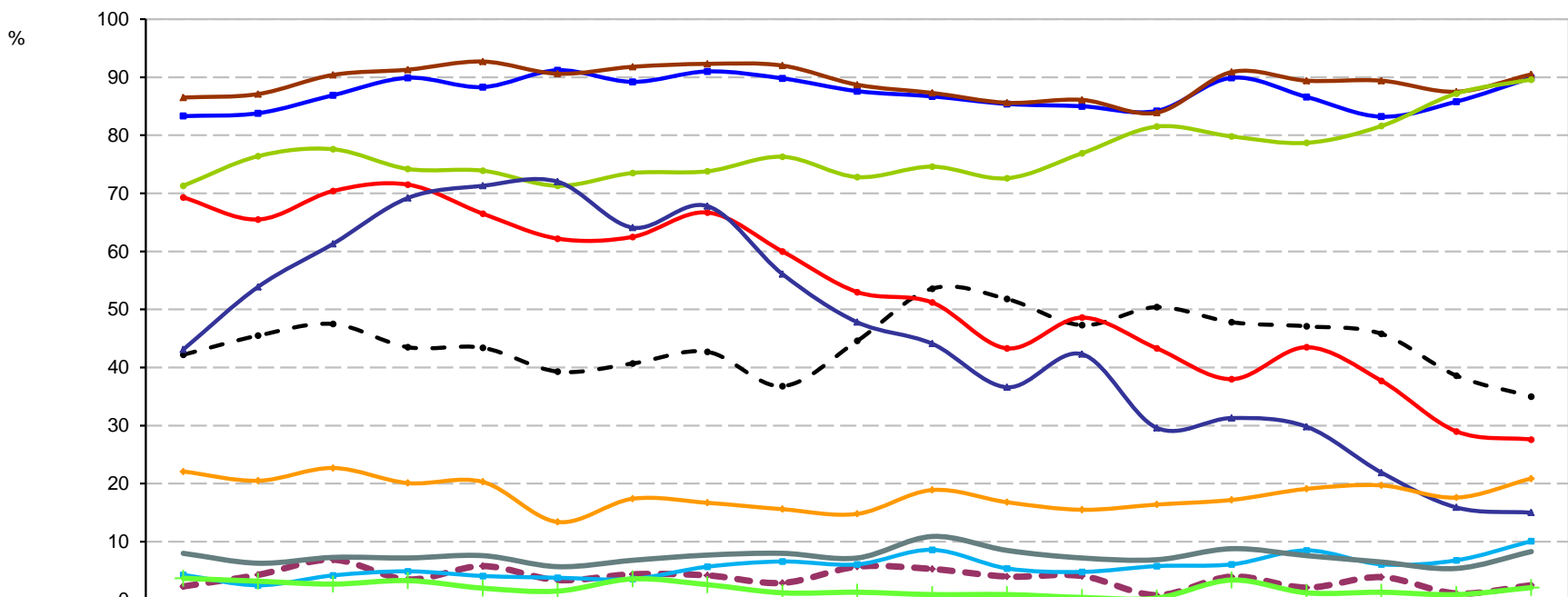
Consumo *alguna vez en la vida* de las principales drogas reportadas por usuarios de drogas ilícitas en tratamiento en **CIJ del Estado de Nayarit (CIJ Tepic)**  
Primer semestre de 2010 – Segundo semestre de 2013





# Consumo alguna vez en la vida de las principales drogas reportadas por usuarios de drogas ilícitas en tratamiento en CIJ del Estado de Nuevo León

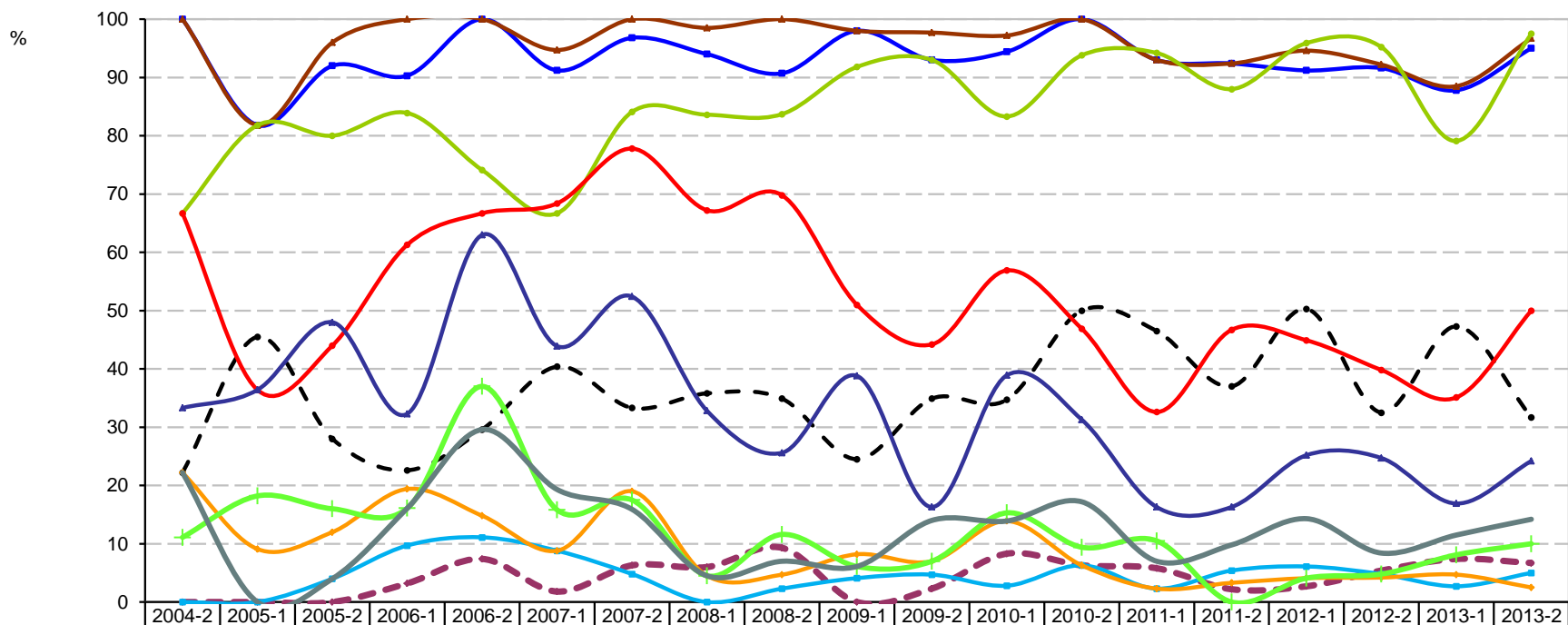
## Segundo semestre de 2004 – Segundo semestre de 2013



	2004-2	2005-1	2005-2	2006-1	2006-2	2007-1	2007-2	2008-1	2008-2	2009-1	2009-2	2010-1	2010-2	2011-1	2011-2	2012-1	2012-2	2013-1	2013-2
Tabaco	83.3	83.8	86.9	89.9	88.3	91.2	89.2	91.0	89.8	87.6	86.7	85.4	85.0	84.2	89.9	86.6	83.2	85.8	89.9
Alcohol	86.5	87.1	90.4	91.3	92.7	90.6	91.8	92.3	92.0	88.7	87.3	85.6	86.1	83.9	90.9	89.4	89.4	87.5	90.5
Cannabis	71.3	76.4	77.6	74.2	73.9	71.3	73.5	73.8	76.3	72.8	74.6	72.6	76.9	81.5	79.8	78.7	81.6	87.2	89.6
Inhalables	42.2	45.5	47.5	43.5	43.4	39.3	40.7	42.7	36.8	44.6	53.6	51.8	47.3	50.4	47.8	47.1	45.8	38.6	35.0
Cocaína	69.3	65.5	70.4	71.5	66.5	62.2	62.5	66.7	60.0	53.0	51.2	43.3	48.6	43.3	38.0	43.5	37.7	29.0	27.6
Crack	43.1	53.9	61.3	69.2	71.3	72.0	64.1	67.8	56.1	47.8	44.1	36.6	42.3	29.6	31.3	29.8	21.9	15.9	15.0
Metanfetaminas	2.3	4.3	6.9	3.5	5.8	3.4	4.4	4.2	2.9	5.7	5.3	4.0	4.1	0.8	4.0	2.1	3.9	1.1	2.5
Éxtasis	4.3	2.5	4.2	4.9	4.1	3.8	3.6	5.7	6.6	6.1	8.6	5.4	4.8	5.8	6.1	8.5	6.1	6.8	10.1
Benzodiacepinas	22.1	20.5	22.7	20.1	20.3	13.4	17.4	16.7	15.6	14.8	18.9	16.8	15.5	16.4	17.2	19.1	19.7	17.6	20.9
Heroína	3.7	3.2	2.7	3.3	2.0	1.5	3.6	2.6	1.2	1.3	0.9	0.9	0.4	0.3	3.4	1.2	1.3	0.9	2.1
Alucinógenos	8.0	6.3	7.3	7.2	7.6	5.7	6.8	7.7	8.0	7.2	10.9	8.5	7.2	6.9	8.8	7.6	6.5	5.4	8.3

# Consumo alguna vez en la vida de las principales drogas reportadas por usuarios de drogas ilícitas en tratamiento en CIJ del Estado de Oaxaca

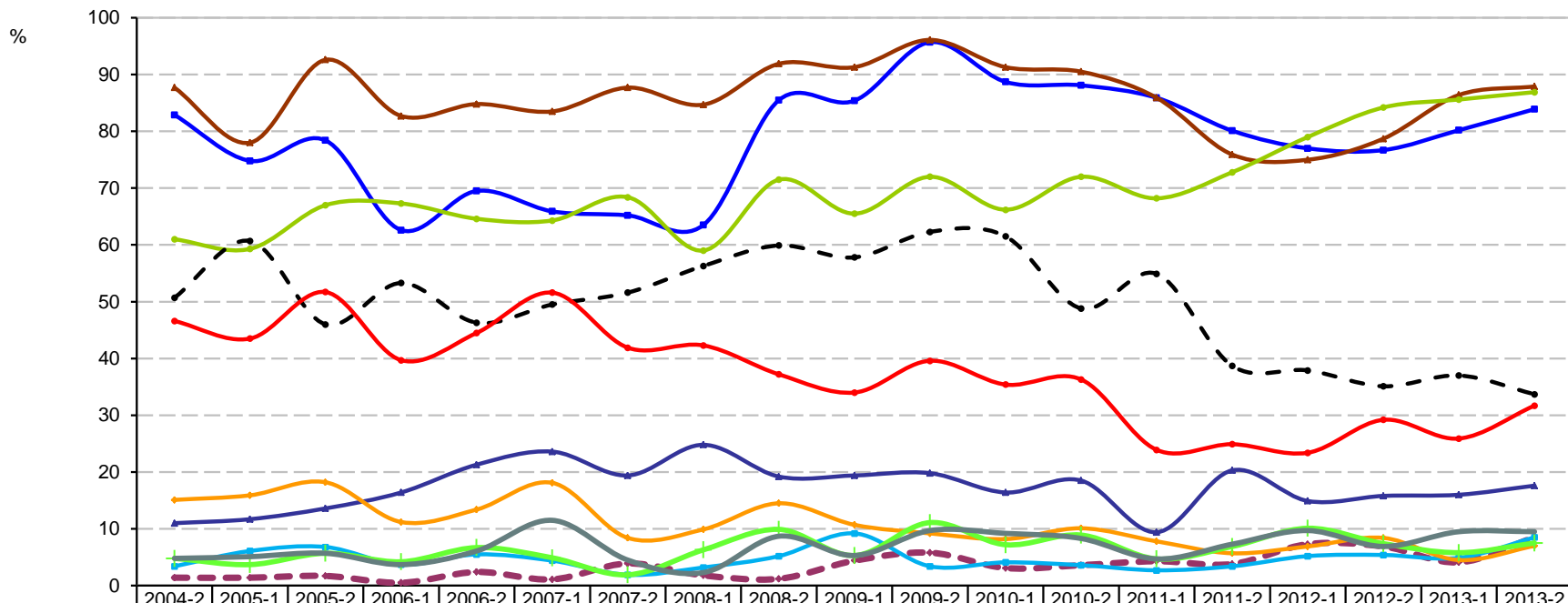
## Segundo semestre de 2004 – Segundo semestre de 2013



	2004-2	2005-1	2005-2	2006-1	2006-2	2007-1	2007-2	2008-1	2008-2	2009-1	2009-2	2010-1	2010-2	2011-1	2011-2	2012-1	2012-2	2013-1	2013-2
Tabaco	100.0	81.8	92.0	90.3	100.0	91.2	96.8	94.0	90.7	98.0	93.0	94.4	100.0	93.0	92.4	91.2	91.6	87.8	95.0
Alcohol	100.0	81.8	96.0	100.0	100.0	94.7	100.0	98.5	100.0	98.0	97.7	97.2	100.0	93.0	92.4	94.6	92.2	88.5	96.7
Cannabis	66.7	81.8	80.0	83.9	74.1	66.7	84.1	83.6	83.7	91.8	93.0	83.3	93.8	94.2	88.0	95.9	95.2	79.1	97.5
Inhalables	22.2	45.5	28.0	22.6	29.6	40.4	33.3	35.8	34.9	24.5	34.9	34.7	50.0	46.5	37.0	50.3	32.5	47.3	31.7
Cocaína	66.7	36.4	44.0	61.3	66.7	68.4	77.8	67.2	69.8	51.0	44.2	56.9	46.9	32.6	46.7	44.9	39.8	35.1	50.0
Crack	33.3	36.4	48.0	32.3	63.0	43.9	52.4	32.8	25.6	38.8	16.3	38.9	31.3	16.3	16.3	25.2	24.7	16.9	24.2
Metanfetaminas	0.0	0.0	0.0	3.2	7.4	1.8	6.3	6.0	9.3	0.0	2.3	8.3	6.3	5.8	2.2	2.7	5.4	7.4	6.7
Éxtasis	0.0	0.0	4.0	9.7	11.1	8.8	4.8	0.0	2.3	4.1	4.7	2.8	6.3	2.3	5.4	6.1	4.8	2.7	5.0
Benzodiacepinas	22.2	9.1	12.0	19.4	14.8	8.8	19.0	4.5	4.7	8.2	7.0	13.9	6.3	2.3	3.3	4.1	4.2	4.7	2.5
Heroína	11.1	18.2	16.0	16.1	37.0	15.8	17.5	4.5	11.6	6.1	7.0	15.3	9.4	10.5	0.0	4.1	4.8	8.1	10.0
Alucinógenos	22.2	0.0	4.0	16.1	29.6	19.3	15.9	4.5	7.0	6.1	14.0	13.9	17.2	7.0	9.8	14.3	8.4	11.5	14.2

# Consumo alguna vez en la vida de las principales drogas reportadas por usuarios de drogas ilícitas en tratamiento en CIJ del Estado de Puebla

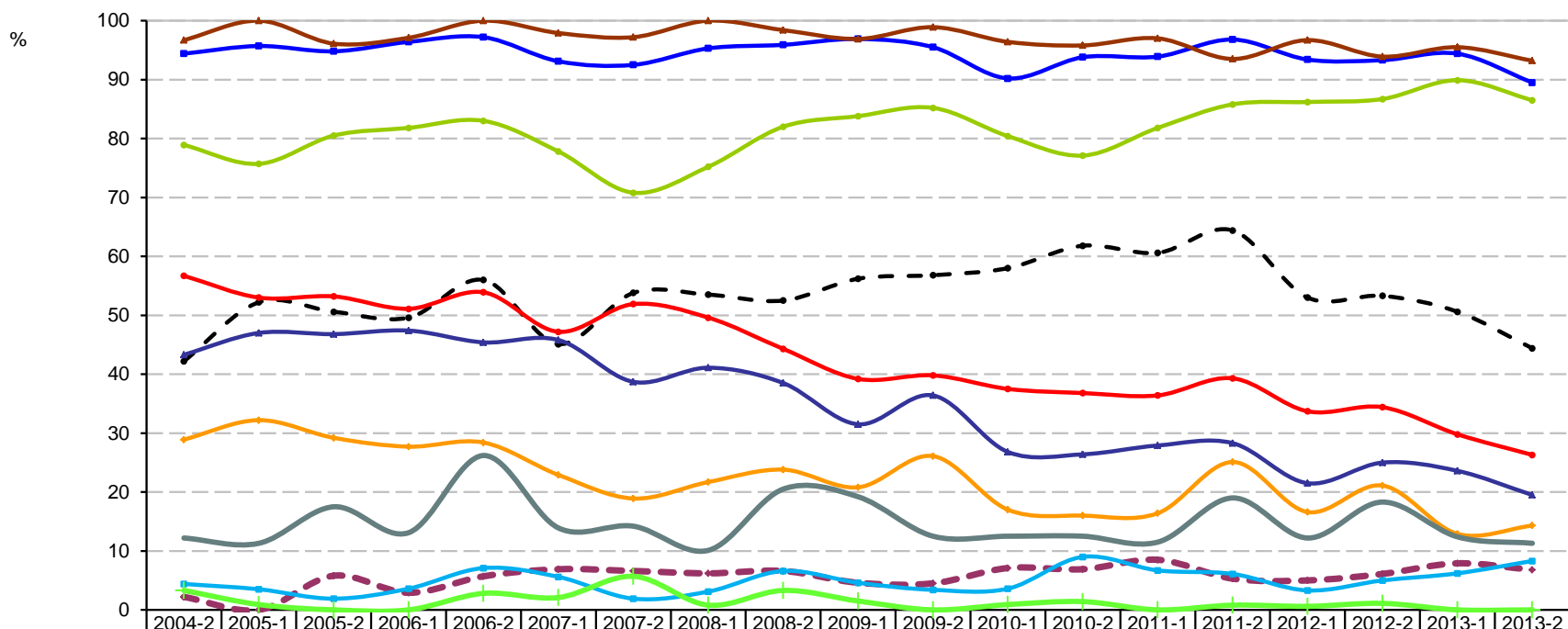
## Segundo semestre de 2004 – Segundo semestre de 2013



	2004-2	2005-1	2005-2	2006-1	2006-2	2007-1	2007-2	2008-1	2008-2	2009-1	2009-2	2010-1	2010-2	2011-1	2011-2	2012-1	2012-2	2013-1	2013-2
Tabaco	82.9	74.8	78.4	62.6	69.5	65.9	65.2	63.5	85.5	85.4	95.7	88.7	88.1	85.9	80.1	77.0	76.7	80.2	83.9
Alcohol	87.7	78.0	92.6	82.7	84.8	83.5	87.7	84.7	91.9	91.3	96.1	91.3	90.5	85.9	75.9	75.0	78.7	86.4	87.9
Cannabis	61.0	59.3	67.0	67.3	64.6	64.3	68.4	59.0	71.5	65.5	72.0	66.2	72.0	68.2	72.8	79.0	84.2	85.6	86.9
Inhalables	50.7	60.7	46.0	53.3	46.3	49.5	51.6	56.3	59.9	57.8	62.3	61.5	48.8	54.9	38.7	37.9	35.1	37.0	33.7
Cocaína	46.6	43.5	51.7	39.7	44.5	51.6	41.9	42.3	37.2	34.0	39.6	35.4	36.3	23.9	24.9	23.4	29.2	25.9	31.7
Crack	11.0	11.7	13.6	16.4	21.3	23.6	19.4	24.8	19.2	19.4	19.8	16.4	18.5	9.4	20.3	14.9	15.8	16.0	17.6
Metanfetaminas	1.4	1.4	1.7	0.5	2.4	1.1	3.9	1.8	1.2	4.4	5.8	3.1	3.6	4.3	3.8	7.3	6.9	4.1	8.5
Éxtasis	3.4	6.1	6.8	3.7	5.5	4.4	1.9	3.2	5.2	9.2	3.4	4.1	3.6	2.7	3.4	5.2	5.4	4.9	8.5
Benzodiacepinas	15.1	15.9	18.2	11.2	13.4	18.1	8.4	9.9	14.5	10.7	9.2	8.2	10.1	7.8	5.7	6.9	8.4	4.5	7.0
Heroína	4.8	3.7	5.7	4.2	6.7	4.9	1.9	6.3	9.9	5.3	11.1	7.2	8.9	4.7	6.9	10.1	7.4	5.8	7.5
Alucinógenos	4.8	5.1	5.7	3.7	6.1	11.5	4.5	2.3	8.7	5.3	9.7	9.2	8.3	4.7	7.3	9.7	6.9	9.5	9.5

# Consumo alguna vez en la vida de las principales drogas reportadas por usuarios de drogas ilícitas en tratamiento en CIJ del Estado de Querétaro (CIJ Querétaro)

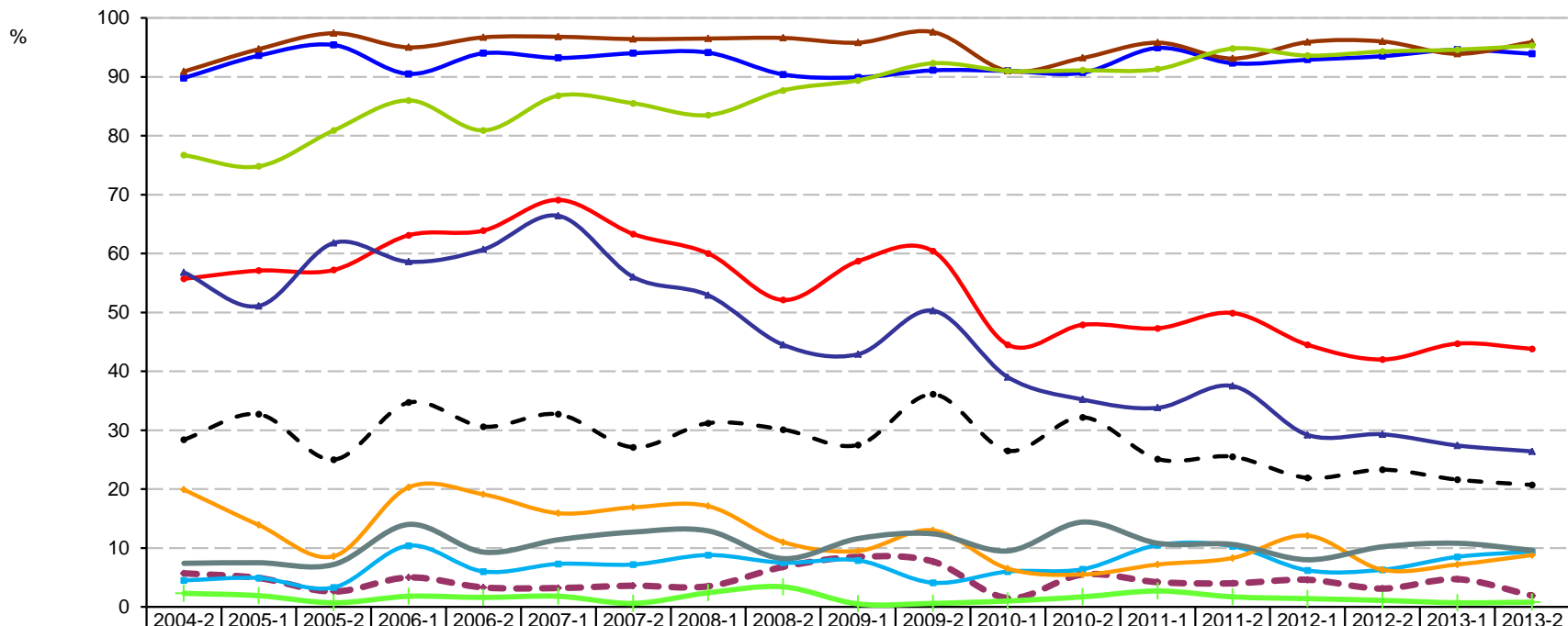
## Segundo semestre de 2004 – Segundo semestre de 2013



	2004-2	2005-1	2005-2	2006-1	2006-2	2007-1	2007-2	2008-1	2008-2	2009-1	2009-2	2010-1	2010-2	2011-1	2011-2	2012-1	2012-2	2013-1	2013-2
Tabaco	94.4	95.7	94.8	96.4	97.2	93.1	92.5	95.3	95.9	96.9	95.5	90.2	93.8	93.9	96.8	93.4	93.3	94.4	89.5
Alcohol	96.7	100.0	96.1	97.1	100.0	97.9	97.2	100.0	98.4	96.9	98.9	96.4	95.8	97.0	93.5	96.7	93.9	95.5	93.2
Cannabis	78.9	75.7	80.5	81.8	83.0	77.8	70.8	75.2	82.0	83.8	85.2	80.4	77.1	81.8	85.8	86.2	86.7	89.9	86.5
Inhalables	42.2	52.2	50.6	49.6	56.0	45.1	53.8	53.5	52.5	56.2	56.8	58.0	61.8	60.6	64.4	53.0	53.3	50.6	44.4
Cocaína	56.7	53.0	53.2	51.1	53.9	47.2	51.9	49.6	44.3	39.2	39.8	37.5	36.8	36.4	39.3	33.7	34.4	29.8	26.3
Crack	43.3	47.0	46.8	47.4	45.4	45.8	38.7	41.1	38.5	31.5	36.4	26.8	26.4	27.9	28.3	21.5	25.0	23.6	19.5
Metanfetaminas	2.2	0.0	5.8	2.9	5.7	6.9	6.6	6.2	6.6	4.6	4.5	7.1	6.9	8.5	5.3	5.0	6.1	7.9	6.8
Éxtasis	4.4	3.5	1.9	3.6	7.1	5.6	1.9	3.1	6.6	4.6	3.4	3.6	9.0	6.7	6.1	3.3	5.0	6.2	8.3
Benzodiacepinas	28.9	32.2	29.2	27.7	28.4	22.9	18.9	21.7	23.8	20.8	26.1	17.0	16.0	16.4	25.1	16.6	21.1	12.9	14.3
Heroína	3.3	0.9	0.0	0.0	2.8	2.1	5.7	0.8	3.3	1.5	0.0	0.9	1.4	0.0	0.8	0.6	1.1	0.0	0.0
Alucinógenos	12.2	11.3	17.5	13.1	26.2	13.9	14.2	10.1	20.5	19.2	12.5	12.5	12.5	11.5	19.0	12.2	18.3	12.4	11.3

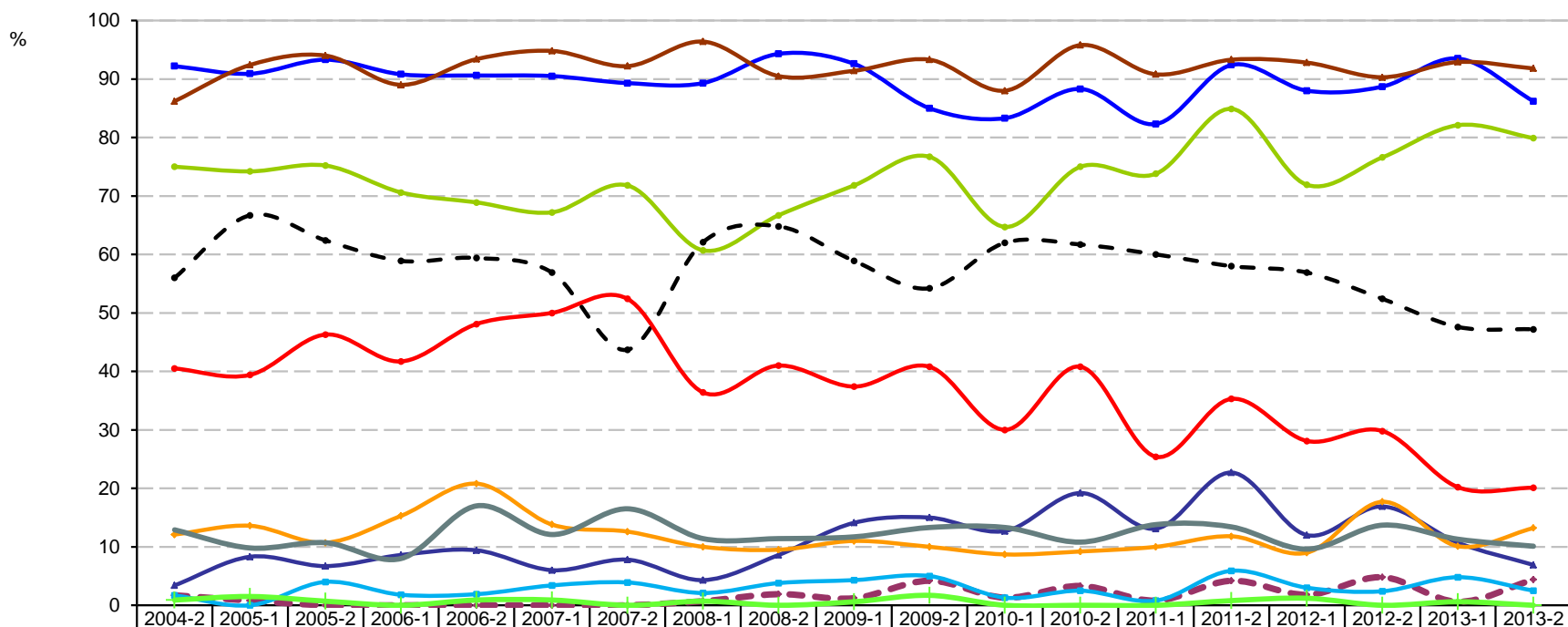
# Consumo alguna vez en la vida de las principales drogas reportadas por usuarios de drogas ilícitas en tratamiento en CIJ del Estado de Quintana Roo

## Segundo semestre de 2004 – Segundo semestre de 2013



	2004-2	2005-1	2005-2	2006-1	2006-2	2007-1	2007-2	2008-1	2008-2	2009-1	2009-2	2010-1	2010-2	2011-1	2011-2	2012-1	2012-2	2013-1	2013-2
Tabaco	89.8	93.6	95.4	90.5	94.0	93.2	94.0	94.1	90.4	89.9	91.1	91.0	90.7	94.9	92.3	92.9	93.5	94.6	93.9
Alcohol	90.9	94.7	97.4	95.0	96.7	96.8	96.4	96.5	96.6	95.8	97.6	91.0	93.2	95.8	93.1	95.9	96.0	93.9	95.9
Cannabis	76.7	74.8	80.9	86.0	80.9	86.8	85.5	83.5	87.7	89.4	92.3	91.0	91.1	91.3	94.8	93.6	94.3	94.6	95.3
Inhalables	28.4	32.7	25.0	34.7	30.6	32.7	27.1	31.2	30.1	27.5	36.1	26.5	32.2	25.1	25.5	21.9	23.3	21.6	20.7
Cocaína	55.7	57.1	57.2	63.1	63.9	69.1	63.3	60.0	52.1	58.7	60.4	44.5	47.9	47.3	49.9	44.5	42.0	44.7	43.8
Crack	56.8	51.1	61.8	58.6	60.7	66.4	56.0	52.9	44.5	42.9	50.3	39.0	35.2	33.8	37.5	29.2	29.3	27.4	26.4
Metanfetaminas	5.7	4.9	2.6	5.0	3.3	3.2	3.6	3.5	6.8	8.5	7.7	1.5	5.5	4.2	4.0	4.6	3.1	4.7	1.9
Éxtasis	4.5	4.9	3.3	10.4	6.0	7.3	7.2	8.8	7.5	7.9	4.1	6.0	6.4	10.5	10.3	6.2	6.3	8.5	9.4
Benzodiacepinas	19.9	13.9	8.6	20.3	19.1	15.9	16.9	17.1	11.0	9.5	13.0	6.5	5.5	7.2	8.3	12.1	6.3	7.2	8.8
Heroína	2.3	1.9	0.7	1.8	1.6	1.8	0.6	2.4	3.4	0.5	0.6	1.0	1.7	2.7	1.7	1.4	1.1	0.7	0.8
Alucinógenos	7.4	7.5	7.2	14.0	9.3	11.4	12.7	12.9	8.2	11.6	12.4	9.5	14.4	10.8	10.6	8.0	10.2	10.8	9.6

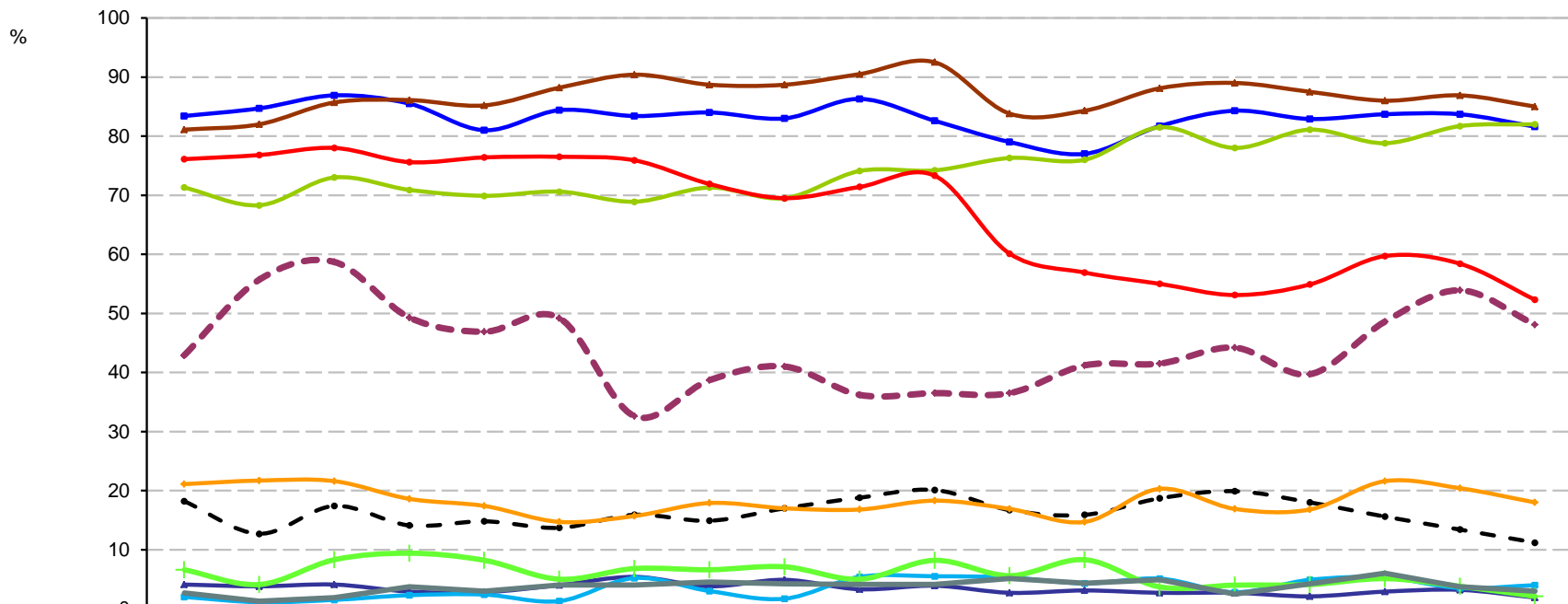
Consumo alguna vez en la vida de las principales drogas reportadas por usuarios de drogas ilícitas en tratamiento en **CIJ del Estado de San Luis Potosí (CIJ San Luis Potosí)**  
Segundo semestre de 2004 – Segundo semestre de 2013



	2004-2	2005-1	2005-2	2006-1	2006-2	2007-1	2007-2	2008-1	2008-2	2009-1	2009-2	2010-1	2010-2	2011-1	2011-2	2012-1	2012-2	2013-1	2013-2
Tabaco	92.2	90.9	93.3	90.8	90.6	90.5	89.3	89.3	94.3	92.6	85.0	83.3	88.3	82.3	92.4	88.0	88.7	93.5	86.2
Alcohol	86.2	92.4	94.0	89.0	93.4	94.8	92.2	96.4	90.5	91.4	93.3	88.0	95.8	90.8	93.3	92.8	90.3	92.9	91.8
Cannabis	75.0	74.2	75.2	70.6	68.9	67.2	71.8	60.7	66.7	71.8	76.7	64.7	75.0	73.8	84.9	71.9	76.6	82.1	79.9
Inhalables	56.0	66.7	62.4	58.9	59.4	56.9	43.7	62.1	64.8	58.9	54.2	62.0	61.7	60.0	58.0	56.9	52.4	47.6	47.2
Cocaína	40.5	39.4	46.3	41.7	48.1	50.0	52.4	36.4	41.0	37.4	40.8	30.0	40.8	25.4	35.3	28.1	29.8	20.2	20.1
Crack	3.4	8.3	6.7	8.6	9.4	6.0	7.8	4.3	8.6	14.1	15.0	12.7	19.2	13.1	22.7	12.0	16.9	10.7	6.9
Metanfetaminas	1.7	0.8	0.0	0.0	0.0	0.0	0.0	0.7	1.9	1.2	4.2	1.3	3.3	0.8	4.2	1.8	4.8	0.6	4.4
Éxtasis	1.7	0.0	4.0	1.8	1.9	3.4	3.9	2.1	3.8	4.3	5.0	1.3	2.5	0.8	5.9	3.0	2.4	4.8	2.5
Benzodiacepinas	12.1	13.6	10.7	15.3	20.8	13.8	12.6	10.0	9.5	11.0	10.0	8.7	9.2	10.0	11.8	9.0	17.7	10.1	13.2
Heroína	0.9	1.5	0.7	0.0	0.9	0.9	0.0	0.7	0.0	0.6	1.7	0.0	0.0	0.0	0.8	1.2	0.0	0.6	0.0
Alucinógenos	12.9	9.8	10.7	8.0	17.0	12.1	16.5	11.4	11.4	11.7	13.3	13.3	10.8	13.8	13.4	9.6	13.7	11.3	10.1

# Consumo alguna vez en la vida de las principales drogas reportadas por usuarios de drogas ilícitas en tratamiento en CIJ del Estado de Sinaloa

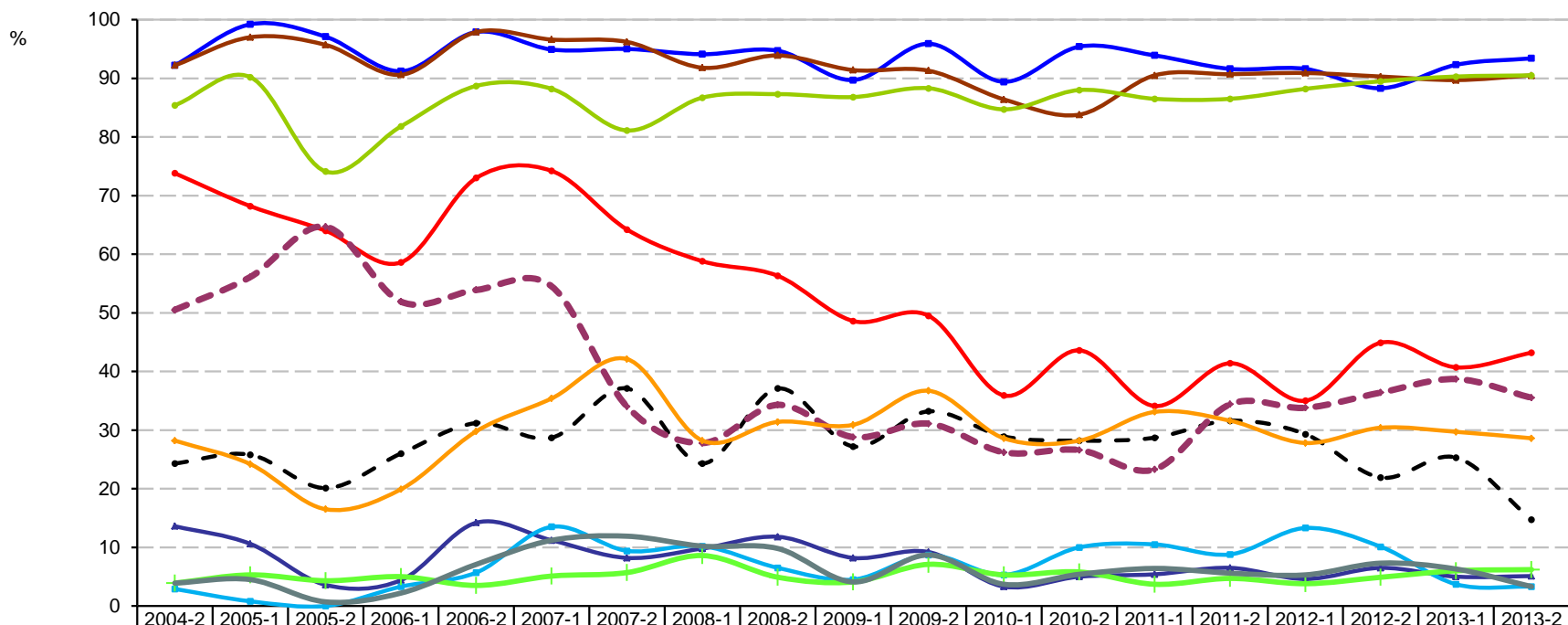
## Segundo semestre de 2004 – Segundo semestre de 2013



	2004-2	2005-1	2005-2	2006-1	2006-2	2007-1	2007-2	2008-1	2008-2	2009-1	2009-2	2010-1	2010-2	2011-1	2011-2	2012-1	2012-2	2013-1	2013-2
Tabaco	83.4	84.7	86.9	85.5	81.0	84.4	83.4	84.0	83.0	86.3	82.6	79.0	77.0	81.7	84.3	82.9	83.7	83.7	81.6
Alcohol	81.1	82.0	85.7	86.1	85.2	88.2	90.4	88.7	88.7	90.5	92.5	83.8	84.3	88.1	89.0	87.5	86.0	86.9	85.0
Cannabis	71.3	68.3	73.0	70.9	69.9	70.6	68.9	71.3	69.5	74.1	74.2	76.3	76.0	81.5	78.0	81.1	78.8	81.7	82.0
Inhalables	18.2	12.7	17.4	14.1	14.8	13.7	15.9	14.9	17.0	18.8	20.1	16.7	15.9	18.7	19.9	18.0	15.6	13.4	11.2
Cocaína	76.1	76.8	78.0	75.6	76.4	76.5	75.9	71.9	69.5	71.4	73.3	60.1	56.9	55.0	53.1	54.9	59.7	58.4	52.3
Crack	4.1	3.8	4.1	2.9	2.8	4.0	5.4	3.8	4.9	3.3	3.9	2.7	3.1	2.7	2.7	2.1	2.9	3.2	1.9
Metanfetaminas	42.9	55.7	58.7	49.3	46.9	49.2	32.6	38.7	41.0	36.2	36.5	36.5	41.2	41.5	44.2	39.7	48.6	53.9	48.1
Éxtasis	2.0	1.1	1.5	2.3	2.4	1.3	5.2	3.0	1.7	5.4	5.5	5.3	4.3	5.1	2.8	4.9	5.3	3.5	4.0
Benzodiacepinas	21.1	21.7	21.6	18.6	17.4	14.7	15.7	17.9	17.0	16.8	18.3	16.9	14.7	20.3	16.9	16.8	21.6	20.4	18.0
Heroína	6.6	4.1	8.3	9.4	8.2	5.0	6.8	6.6	7.1	5.0	8.2	5.6	8.3	3.7	4.0	4.1	5.1	3.8	2.1
Alucinógenos	2.7	1.3	1.9	3.7	3.0	4.0	4.0	4.5	4.2	4.1	4.1	5.1	4.3	4.9	2.5	4.2	6.0	3.7	3.0

# Consumo alguna vez en la vida de las principales drogas reportadas por usuarios de drogas ilícitas en tratamiento en CIJ del Estado de Sonora

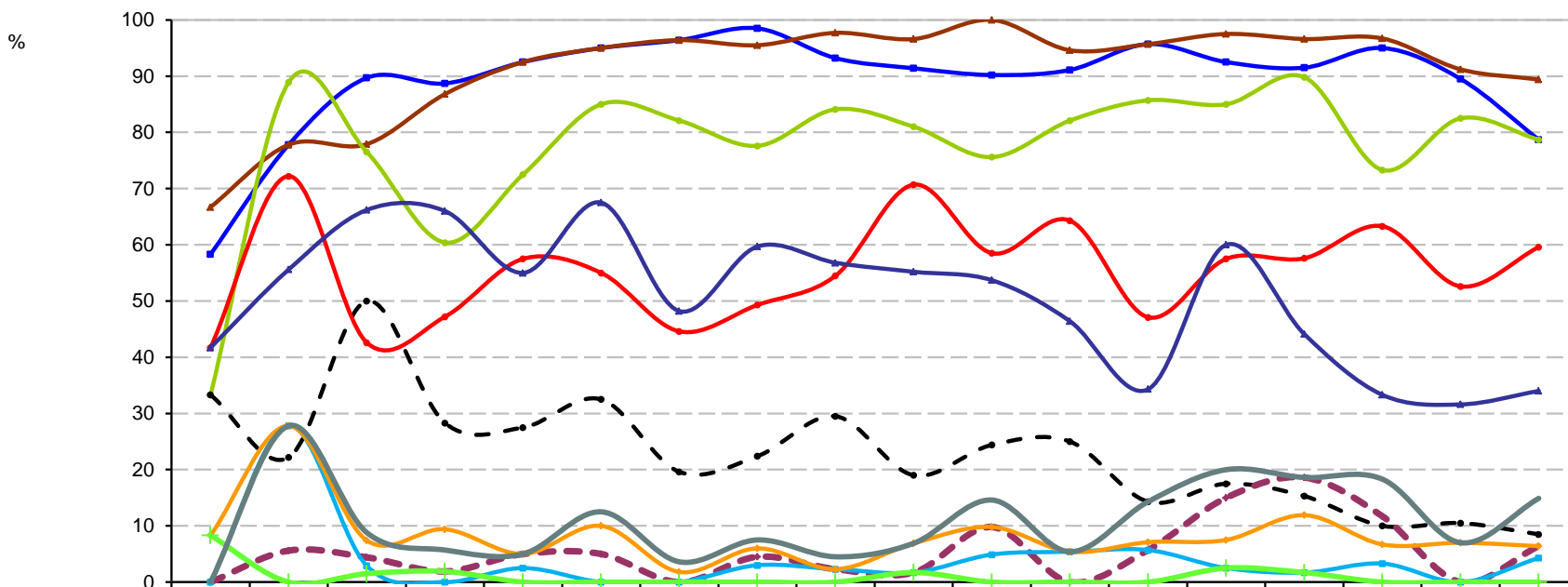
## Segundo semestre de 2004 – Segundo semestre de 2013



	2004-2	2005-1	2005-2	2006-1	2006-2	2007-1	2007-2	2008-1	2008-2	2009-1	2009-2	2010-1	2010-2	2011-1	2011-2	2012-1	2012-2	2013-1	2013-2
Tabaco	92.2	99.2	97.1	91.2	97.9	94.9	95.0	94.1	94.7	89.7	95.9	89.4	95.4	93.9	91.6	91.6	88.3	92.3	93.4
Alcohol	92.2	97.0	95.7	90.6	97.9	96.6	96.2	91.8	93.9	91.4	91.3	86.4	83.8	90.5	90.7	90.9	90.3	89.7	90.5
Cannabis	85.4	90.2	74.1	81.8	88.7	88.2	81.1	86.7	87.3	86.8	88.3	84.7	88.0	86.5	86.5	88.2	89.5	90.3	90.5
Inhalables	24.3	25.8	20.1	26.0	31.2	28.7	37.1	24.3	37.1	27.2	33.2	28.9	28.2	28.7	31.6	29.3	21.9	25.3	14.7
Cocaína	73.8	68.2	64.0	58.6	73.0	74.2	64.2	58.8	56.3	48.6	49.5	35.9	43.6	34.1	41.4	35.0	44.9	40.7	43.2
Crack	13.6	10.6	3.6	4.4	14.2	11.2	8.2	9.8	11.8	8.2	9.2	3.3	5.0	5.4	6.5	4.6	6.5	5.0	5.1
Metanfetaminas	50.5	56.1	64.7	51.9	53.9	54.5	34.0	27.8	34.3	28.8	31.1	26.2	26.6	23.3	34.4	33.8	36.4	38.7	35.5
Éxtasis	2.9	0.8	0.0	3.3	5.7	13.5	9.4	10.2	6.5	4.5	8.7	5.3	10.0	10.5	8.8	13.3	10.1	3.7	3.3
Benzodiacepinas	28.2	24.2	16.5	19.9	29.8	35.4	42.1	28.2	31.4	30.9	36.7	28.6	28.2	33.1	31.6	27.8	30.4	29.7	28.6
Heroína	3.9	5.3	4.3	5.0	3.5	5.1	5.7	8.6	4.9	4.1	7.1	5.3	5.8	3.7	4.7	3.8	4.9	6.0	6.2
Alucinógenos	3.9	4.5	0.7	2.2	7.1	11.2	11.9	10.2	9.8	4.1	8.7	3.7	5.4	6.4	5.6	5.3	7.3	6.3	3.3



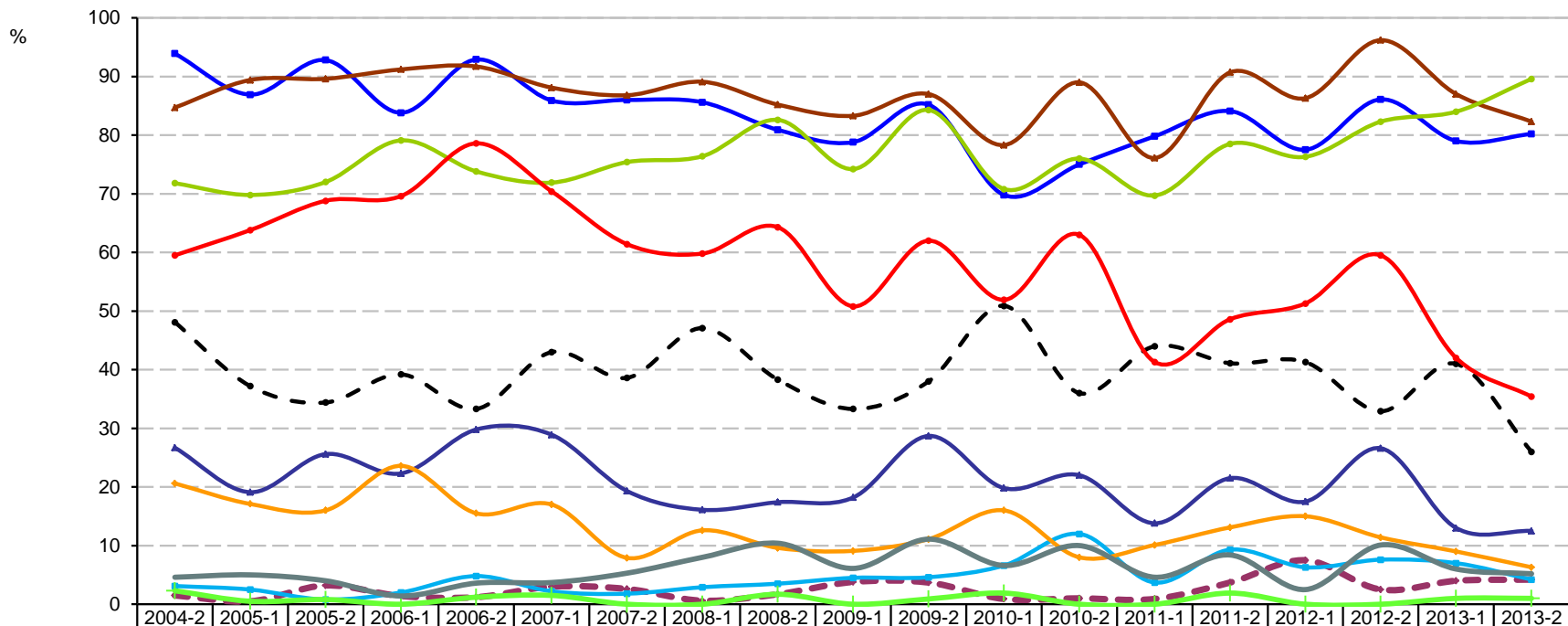
Consumo alguna vez en la vida de las principales drogas reportadas por usuarios de drogas ilícitas en tratamiento en **CIJ del Estado de Tabasco (CIJ Villahermosa)**  
Primer semestre de 2005 – Segundo semestre de 2013



	2005-1	2005-2	2006-1	2006-2	2007-1	2007-2	2008-1	2008-2	2009-1	2009-2	2010-1	2010-2	2011-1	2011-2	2012-1	2012-2	2013-1	2013-2
Tabaco	58.3	77.8	89.7	88.7	92.5	95.0	96.4	98.5	93.2	91.4	90.2	91.1	95.7	92.5	91.5	95.0	89.5	78.7
Alcohol	66.7	77.8	77.9	86.8	92.5	95.0	96.4	95.5	97.7	96.6	100.0	94.6	95.7	97.5	96.6	96.7	91.2	89.4
Cannabis	33.3	88.9	76.5	60.4	72.5	85.0	82.1	77.6	84.1	81.0	75.6	82.1	85.7	85.0	89.8	73.3	82.5	78.7
Inhalables	33.3	22.2	50.0	28.3	27.5	32.5	19.6	22.4	29.5	19.0	24.4	25.0	14.3	17.5	15.3	10.0	10.5	8.5
Cocaína	41.7	72.2	42.6	47.2	57.5	55.0	44.6	49.3	54.5	70.7	58.5	64.3	47.1	57.5	57.6	63.3	52.6	59.6
Crack	41.7	55.6	66.2	66.0	55.0	67.5	48.2	59.7	56.8	55.2	53.7	46.4	34.3	60.0	44.1	33.3	31.6	34.0
Metanfetaminas	0.0	5.6	4.4	1.9	5.0	5.0	0.0	4.5	2.3	1.7	9.8	0.0	5.7	15.0	18.6	11.7	0.0	6.4
Éxtasis	0.0	27.8	2.9	0.0	2.5	0.0	0.0	3.0	2.3	1.7	4.9	5.4	5.7	2.5	1.7	3.3	0.0	4.3
Benzodiacepinas	8.3	27.8	7.4	9.4	5.0	10.0	1.8	6.0	2.3	6.9	9.8	5.4	7.1	7.5	11.9	6.7	7.0	6.4
Heroína	8.3	0.0	1.5	1.9	0.0	0.0	0.0	0.0	0.0	0.0	0.0	0.0	0.0	2.5	1.7	0.0	0.0	0.0
Alucinógenos	0.0	27.8	8.8	5.7	5.0	12.5	3.6	7.5	4.5	6.9	14.6	5.4	14.3	20.0	18.6	18.3	7.0	14.9

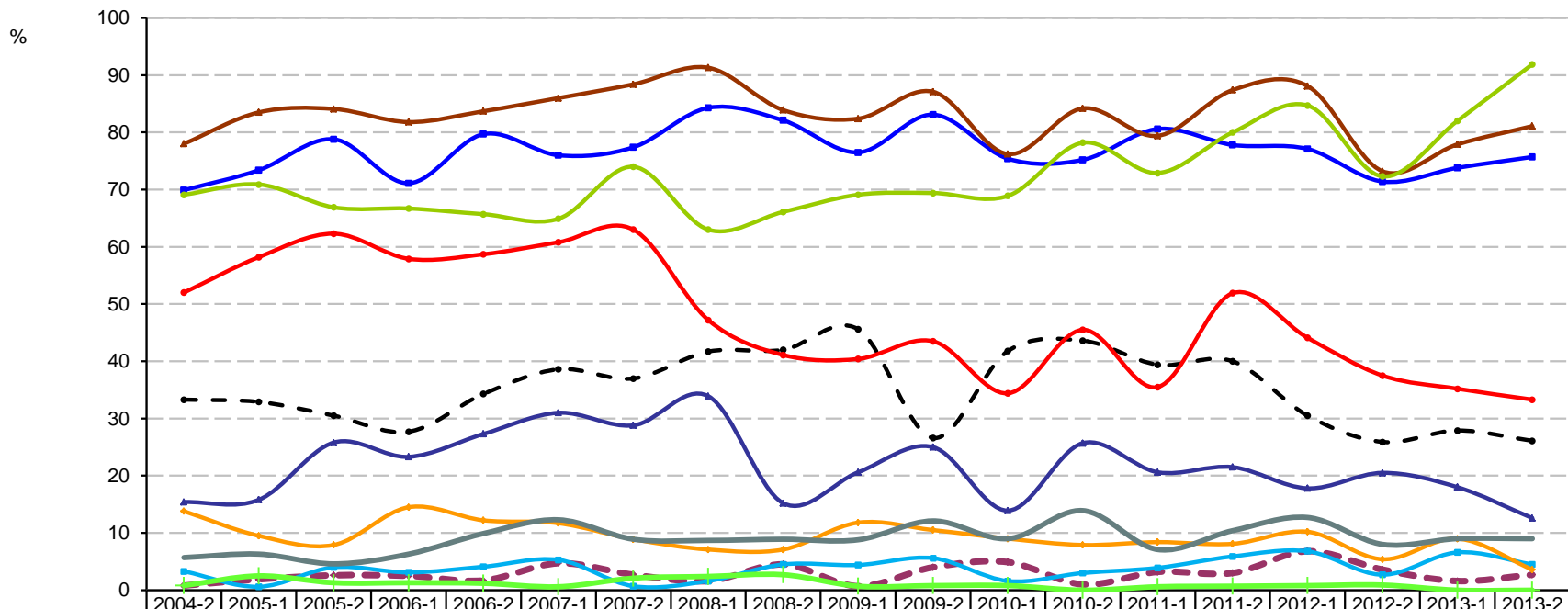
# Consumo alguna vez en la vida de las principales drogas reportadas por usuarios de drogas ilícitas en tratamiento en CIJ del Estado de Tamaulipas

## Segundo semestre de 2004 – Segundo semestre de 2013



	2004-2	2005-1	2005-2	2006-1	2006-2	2007-1	2007-2	2008-1	2008-2	2009-1	2009-2	2010-1	2010-2	2011-1	2011-2	2012-1	2012-2	2013-1	2013-2
Tabaco	93.9	86.9	92.8	83.8	92.9	85.9	86.0	85.6	80.9	78.8	85.2	69.8	75.0	79.8	84.1	77.5	86.1	79.0	80.2
Alcohol	84.7	89.4	89.6	91.2	91.7	88.1	86.8	89.1	85.2	83.3	87.0	78.3	89.0	76.1	90.7	86.3	96.2	87.0	82.3
Cannabis	71.8	69.8	72.0	79.1	73.8	71.9	75.4	76.4	82.6	74.2	84.3	70.8	76.0	69.7	78.5	76.3	82.3	84.0	89.6
Inhalables	48.1	37.2	34.4	39.2	33.3	43.0	38.6	47.1	38.3	33.3	38.0	50.9	36.0	44.0	41.1	41.3	32.9	41.0	26.0
Cocaína	59.5	63.8	68.8	69.6	78.6	70.4	61.4	59.8	64.3	50.8	62.0	51.9	63.0	41.3	48.6	51.3	59.5	42.0	35.4
Crack	26.7	19.1	25.6	22.3	29.8	28.9	19.3	16.1	17.4	18.2	28.7	19.8	22.0	13.8	21.5	17.5	26.6	13.0	12.5
Metanfetaminas	1.5	0.5	3.2	1.4	1.2	3.0	2.6	0.6	1.7	3.8	3.7	0.9	1.0	0.9	3.7	7.5	2.5	4.0	4.2
Éxtasis	3.1	2.5	0.8	2.0	4.8	2.2	1.8	2.9	3.5	4.5	4.6	6.6	12.0	3.7	9.3	6.3	7.6	7.0	4.2
Benzodiacepinas	20.6	17.1	16.0	23.6	15.5	17.0	7.9	12.6	9.6	9.1	11.1	16.0	8.0	10.1	13.1	15.0	11.4	9.0	6.3
Heroína	2.3	0.5	0.8	0.0	1.2	1.5	0.0	0.0	1.7	0.0	0.9	1.9	0.0	0.0	1.9	0.0	0.0	1.0	1.0
Alucinógenos	4.6	5.0	4.0	1.4	3.6	3.7	5.3	8.0	10.4	6.1	11.1	6.6	10.0	4.6	8.4	2.5	10.1	6.0	5.2

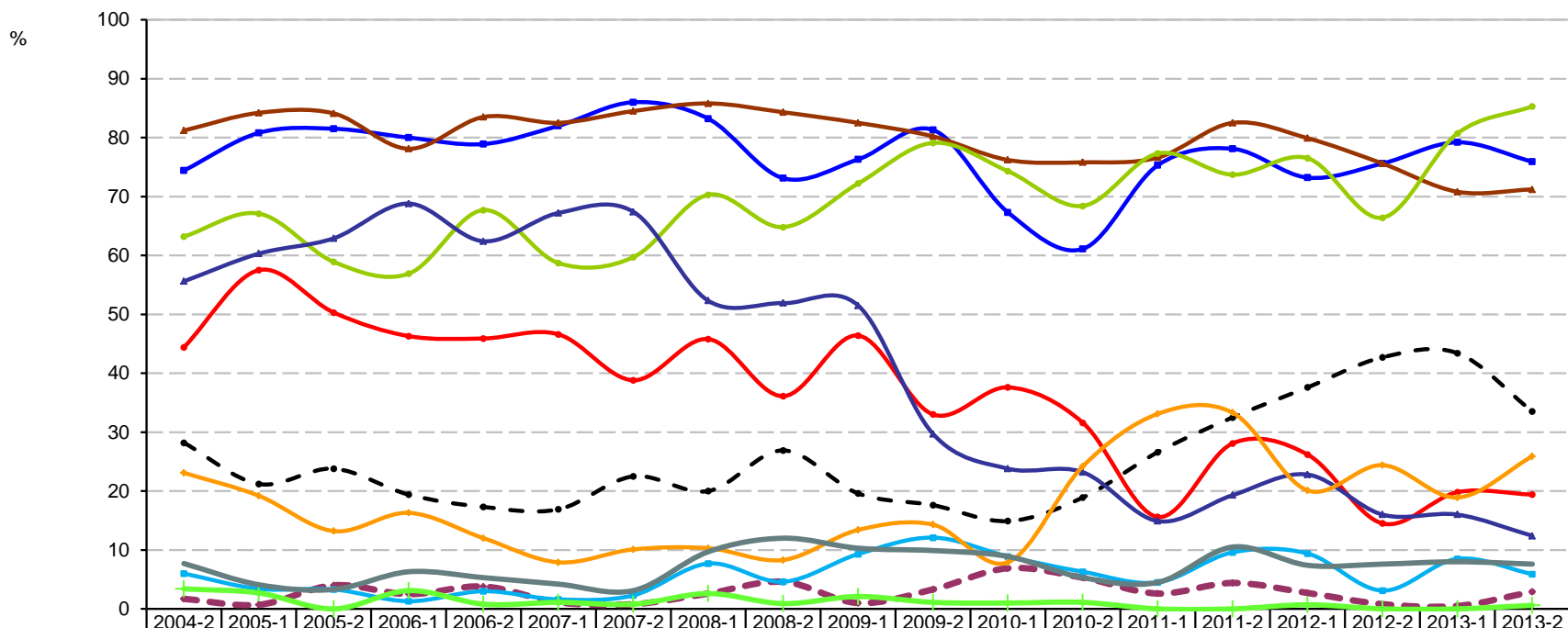
Consumo alguna vez en la vida de las principales drogas reportadas por usuarios de drogas ilícitas en tratamiento en **CIJ del Estado de Veracruz**  
Segundo semestre de 2004 – Segundo semestre de 2013



	2004-2	2005-1	2005-2	2006-1	2006-2	2007-1	2007-2	2008-1	2008-2	2009-1	2009-2	2010-1	2010-2	2011-1	2011-2	2012-1	2012-2	2013-1	2013-2
Tabaco	69.9	73.4	78.8	71.1	79.7	76.0	77.4	84.3	82.1	76.5	83.1	75.4	75.2	80.6	77.8	77.1	71.4	73.8	75.7
Alcohol	78.0	83.5	84.1	81.8	83.7	86.0	88.4	91.3	83.9	82.4	87.1	76.2	84.2	79.4	87.4	88.1	73.2	77.9	81.1
Cannabis	69.1	70.9	66.9	66.7	65.7	64.9	74.0	63.0	66.1	69.1	69.4	68.9	78.2	72.9	80.0	84.7	72.3	82.0	91.9
Inhalables	33.3	32.9	30.5	27.7	34.3	38.6	37.0	41.7	42.0	45.6	26.6	41.8	43.6	39.4	40.0	30.5	25.9	27.9	26.1
Cocaína	52.0	58.2	62.3	57.9	58.7	60.8	63.0	47.2	41.1	40.4	43.5	34.4	45.5	35.5	51.9	44.1	37.5	35.2	33.3
Crack	15.4	15.8	25.8	23.3	27.3	31.0	28.8	33.9	15.2	20.6	25.0	13.9	25.7	20.6	21.5	17.8	20.5	18.0	12.6
Metanfetaminas	0.8	1.9	2.6	2.5	1.7	4.7	2.7	1.6	4.5	0.7	4.0	4.9	1.0	3.2	3.0	6.8	3.6	1.6	2.7
Éxtasis	3.3	0.6	4.0	3.1	4.1	5.3	0.7	1.6	4.5	4.4	5.6	1.6	3.0	3.9	5.9	6.8	2.7	6.6	4.5
Benzodiacepinas	13.8	9.5	7.9	14.5	12.2	11.7	8.9	7.1	7.1	11.8	10.5	9.0	7.9	8.4	8.1	10.2	5.4	9.0	3.6
Heroína	0.8	2.5	1.3	1.3	1.2	0.6	2.1	2.4	2.7	0.7	0.8	0.8	0.0	0.6	0.7	0.8	0.9	0.0	0.0
Alucinógenos	5.7	6.3	4.6	6.3	9.9	12.3	8.9	8.7	8.9	8.8	12.1	9.0	13.9	7.1	10.4	12.7	8.0	9.0	9.0

# Consumo alguna vez en la vida de las principales drogas reportadas por usuarios de drogas ilícitas en tratamiento en CIJ del Estado de Yucatán (CIJ Mérida)

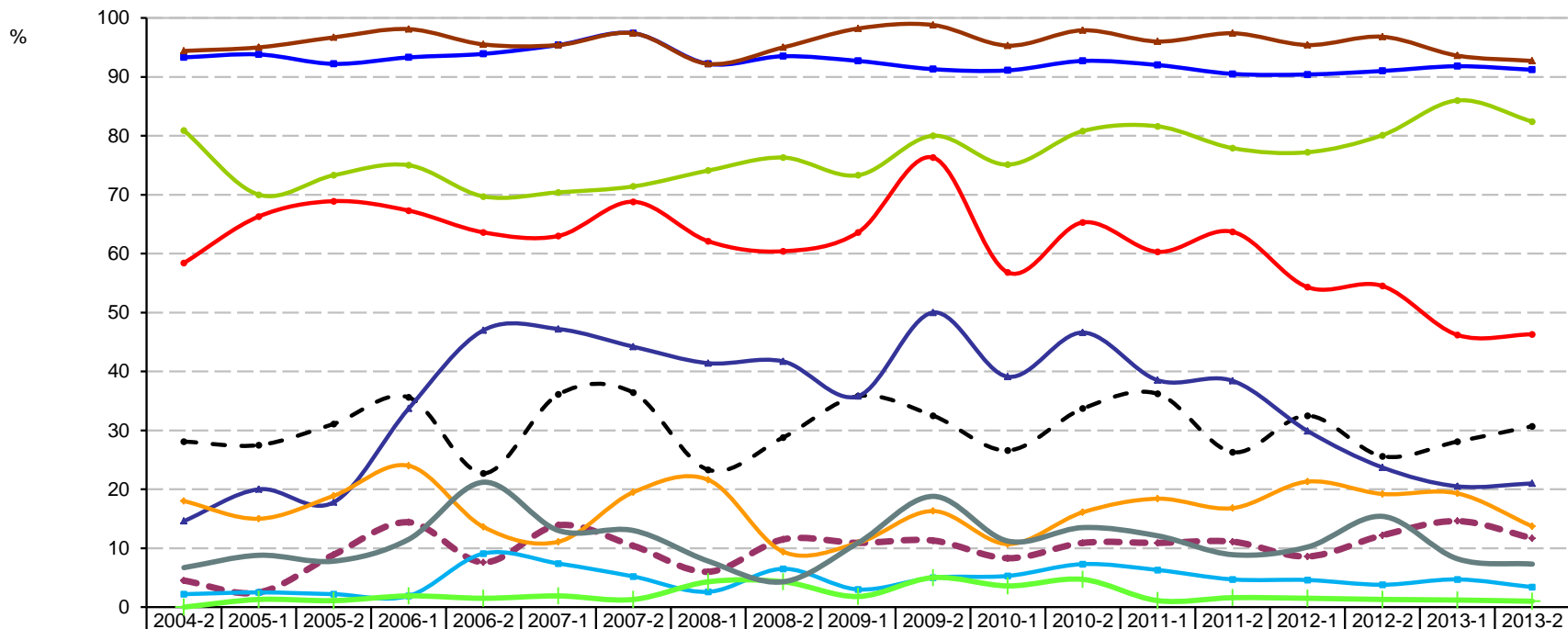
## Segundo semestre de 2004 – Segundo semestre de 2013



	2004-2	2005-1	2005-2	2006-1	2006-2	2007-1	2007-2	2008-1	2008-2	2009-1	2009-2	2010-1	2010-2	2011-1	2011-2	2012-1	2012-2	2013-1	2013-2
Tabaco	74.4	80.8	81.5	80.0	78.9	82.0	86.0	83.2	73.1	76.3	81.3	67.3	61.1	75.3	78.1	73.2	75.6	79.2	75.9
Alcohol	81.2	84.2	84.1	78.1	83.5	82.5	84.5	85.8	84.3	82.5	80.2	76.2	75.8	76.6	82.5	79.9	75.6	70.8	71.2
Cannabis	63.2	67.1	58.9	56.9	67.7	58.7	59.7	70.3	64.8	72.2	79.1	74.3	68.4	77.3	73.7	76.5	66.4	80.7	85.3
Inhalables	28.2	21.2	23.8	19.4	17.3	16.9	22.5	20.0	26.9	19.6	17.6	14.9	18.9	26.6	32.5	37.6	42.7	43.4	33.5
Cocaína	44.4	57.5	50.3	46.3	45.9	46.6	38.8	45.8	36.1	46.4	33.0	37.6	31.6	15.6	28.1	26.2	14.5	19.8	19.4
Crack	55.6	60.3	62.9	68.8	62.4	67.2	67.4	52.3	51.9	51.5	29.7	23.8	23.2	14.9	19.3	22.8	16.0	16.0	12.4
Metanfetaminas	1.7	0.7	4.0	2.5	3.8	1.1	0.8	2.6	4.6	1.0	3.3	6.9	5.3	2.6	4.4	2.7	0.8	0.5	2.9
Éxtasis	6.0	3.4	3.3	1.3	3.0	1.6	2.3	7.7	4.6	9.3	12.1	8.9	6.3	4.5	9.6	9.4	3.1	8.5	5.9
Benzodiacepinas	23.1	19.2	13.2	16.3	12.0	7.9	10.1	10.3	8.3	13.4	14.3	7.9	24.2	33.1	33.3	20.1	24.4	18.9	25.9
Heroína	3.4	2.7	0.0	3.1	0.8	1.1	0.8	2.6	0.9	2.1	1.1	1.0	1.1	0.0	0.0	0.7	0.0	0.0	0.6
Alucinógenos	7.7	4.1	3.3	6.3	5.3	4.2	3.1	9.7	12.0	10.3	9.9	8.9	5.3	4.5	10.5	7.4	7.6	8.0	7.6

# Consumo alguna vez en la vida de las principales drogas reportadas por usuarios de drogas ilícitas en tratamiento en CIJ del Estado de Zacatecas

## Segundo semestre de 2004 – Segundo semestre de 2013



	2004-2	2005-1	2005-2	2006-1	2006-2	2007-1	2007-2	2008-1	2008-2	2009-1	2009-2	2010-1	2010-2	2011-1	2011-2	2012-1	2012-2	2013-1	2013-2
Tabaco	93.3	93.8	92.2	93.3	93.9	95.4	97.4	92.2	93.5	92.7	91.3	91.1	92.7	92.0	90.5	90.4	91.0	91.8	91.2
Alcohol	94.4	95.0	96.7	98.1	95.5	95.4	97.4	92.2	95.0	98.2	98.8	95.3	97.9	96.0	97.4	95.4	96.8	93.6	92.7
Cannabis	80.9	70.0	73.3	75.0	69.7	70.4	71.4	74.1	76.3	73.3	80.0	75.1	80.8	81.6	77.9	77.2	80.1	86.0	82.4
Inhalables	28.1	27.5	31.1	35.6	22.7	36.1	36.4	23.3	28.8	35.8	32.5	26.6	33.7	36.2	26.3	32.5	25.6	28.1	30.7
Cocaína	58.4	66.3	68.9	67.3	63.6	63.0	68.8	62.1	60.4	63.6	76.3	56.8	65.3	60.3	63.7	54.3	54.5	46.2	46.3
Crack	14.6	20.0	17.8	33.7	47.0	47.2	44.2	41.4	41.7	35.8	50.0	39.1	46.6	38.5	38.4	29.9	23.7	20.5	21.0
Metanfetaminas	4.5	2.5	8.9	14.4	7.6	13.9	10.4	6.0	11.5	10.9	11.3	8.3	10.9	10.9	11.1	8.6	12.2	14.6	11.7
Éxtasis	2.2	2.5	2.2	1.9	9.1	7.4	5.2	2.6	6.5	3.0	5.0	5.3	7.3	6.3	4.7	4.6	3.8	4.7	3.4
Benzodiacepinas	18.0	15.0	18.9	24.0	13.6	11.1	19.5	21.6	9.4	10.9	16.3	10.7	16.1	18.4	16.8	21.3	19.2	19.3	13.7
Heroína	0.0	1.3	1.1	1.9	1.5	1.9	1.3	4.3	4.3	1.8	5.0	3.6	4.7	1.1	1.6	1.5	1.3	1.2	1.0
Alucinógenos	6.7	8.8	7.8	11.5	21.2	13.0	13.0	7.8	4.3	10.9	18.8	11.2	13.5	12.1	8.9	10.2	15.4	8.2	7.3